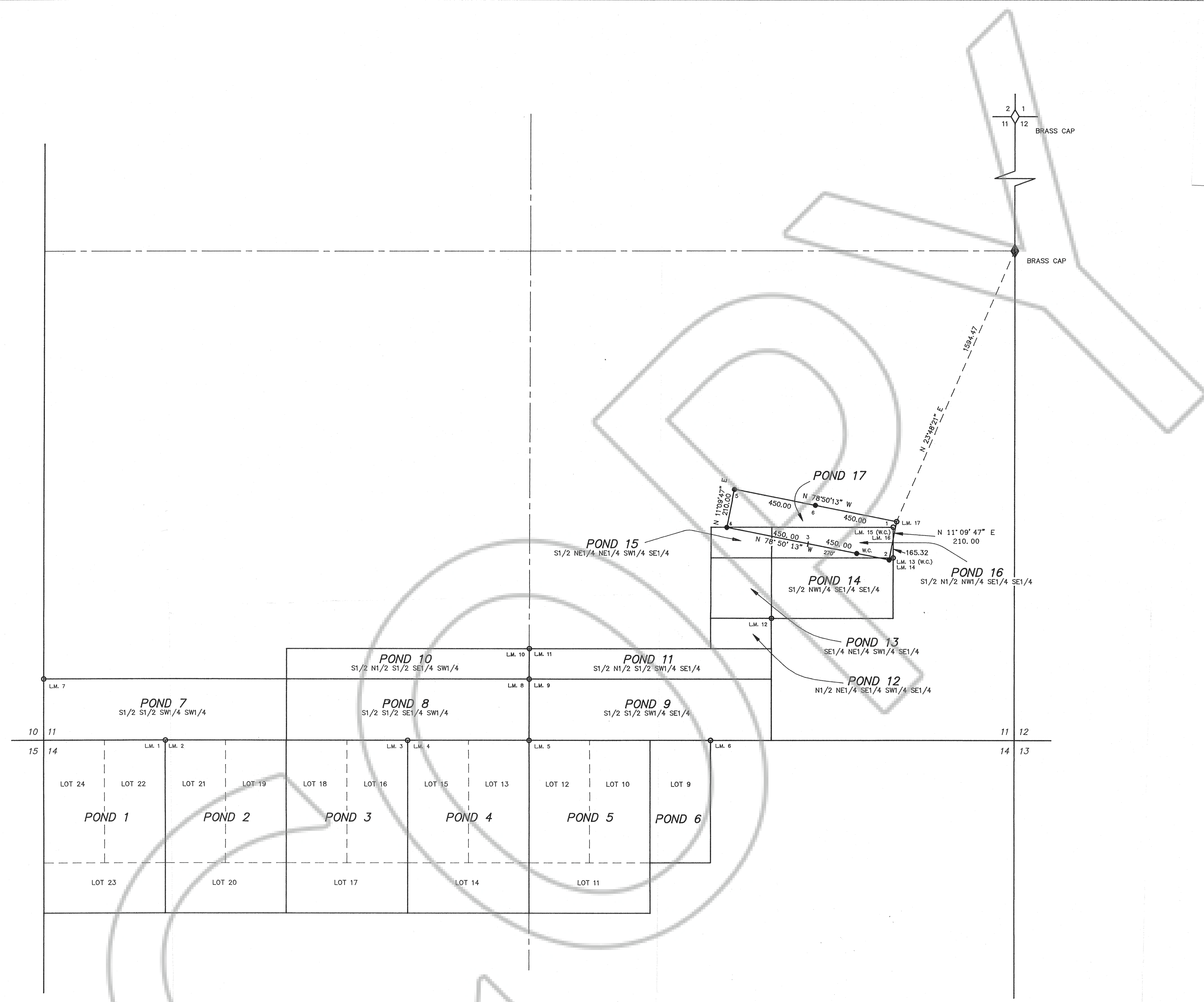
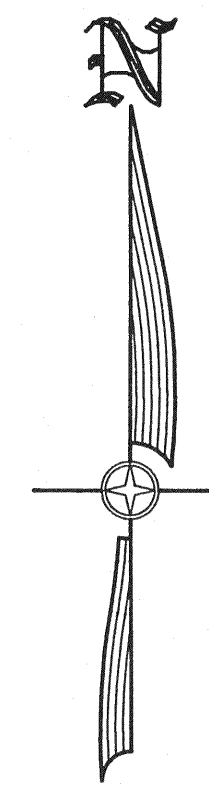


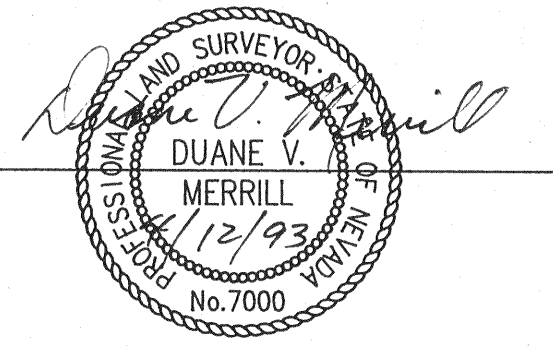
Pg. 255.00 1-17

Credit of
109.00



LAND SURVEYOR'S CERTIFICATE

I, DUANE V. MERRILL, DO HEREBY CERTIFY THAT THIS IS A TRUE AND ACCURATE MAP OF THE LAND SURVEYED UNDER MY SUPERVISION AND DIRECTION AT THE INSTANCE OF NEWMONT GOLD COMPANY, AND THAT THE MONUMENTS ARE OF THE CHARACTER AND OCCUPY THE POSITIONS INDICATED HEREON AND ARE SUFFICIENT TO ENABLE THIS SURVEY TO BE RETRACED.



P.L.S. NO. 7000

OWNER AND LOCATOR

NEWMONT GOLD COMPANY
P.O. BOX 669
CARLIN, NEVADA 89822

LOCATION DATES

POND 1 - 17 WERE LOCATED ON JANUARY 21ST, 1993.

ALL CORNERS AND SIDE CENTERS OF POND 17 WERE ERECTED ON OR BEFORE MARCH 16, 1993

BASIS OF BEARINGS: THE LINE BETWEEN THE EAST 1/4 CORNER OF SECTION 11 AND THE NORTHEAST CORNER OF SECTION 11, T 35 N - R 50 E, MDB & M TAKEN AS N 0°03'34" E.

LEGEND

- = 4" X 4" WOOD POST CLAIM CORNER
- = 4" X 4" WOOD POST LOCATION MONUMENT
- ◆ = FOUND 1/4 CORNER

L.M. 1 = PHYSICAL POSITION OF LOCATION MONUMENT OR WITNESS CORNER FOR LOCATION MONUMENT

FILED AT THE REQUEST OF Neumont Exploration
on April 14 1993, at 44 mins. past 04.
RECORDS OF EUREKA COUNTY, NEVADA M.N. REBALE ALL REL UNDER
File No. 145226 Fee \$ 253



SCALE: 1"=300'

T 35 N - R 50 E M.D.B. & M.

MAP OF
PLACER MINING CLAIMS
POND 1 - 17
FOR NEWMONT GOLD COMPANY
IN
EUREKA COUNTY, NEVADA

HIGH
DESERT
ENGINEERING
640 IDAHO STREET
ELKO, NEVADA 89801
(702) 738-4053

93026

145226