

LEGEND

- = 4" x 4" WOOD POST CLAIM CORNER
- = 4" x 4" WOOD POST LOCATION MONUMENT

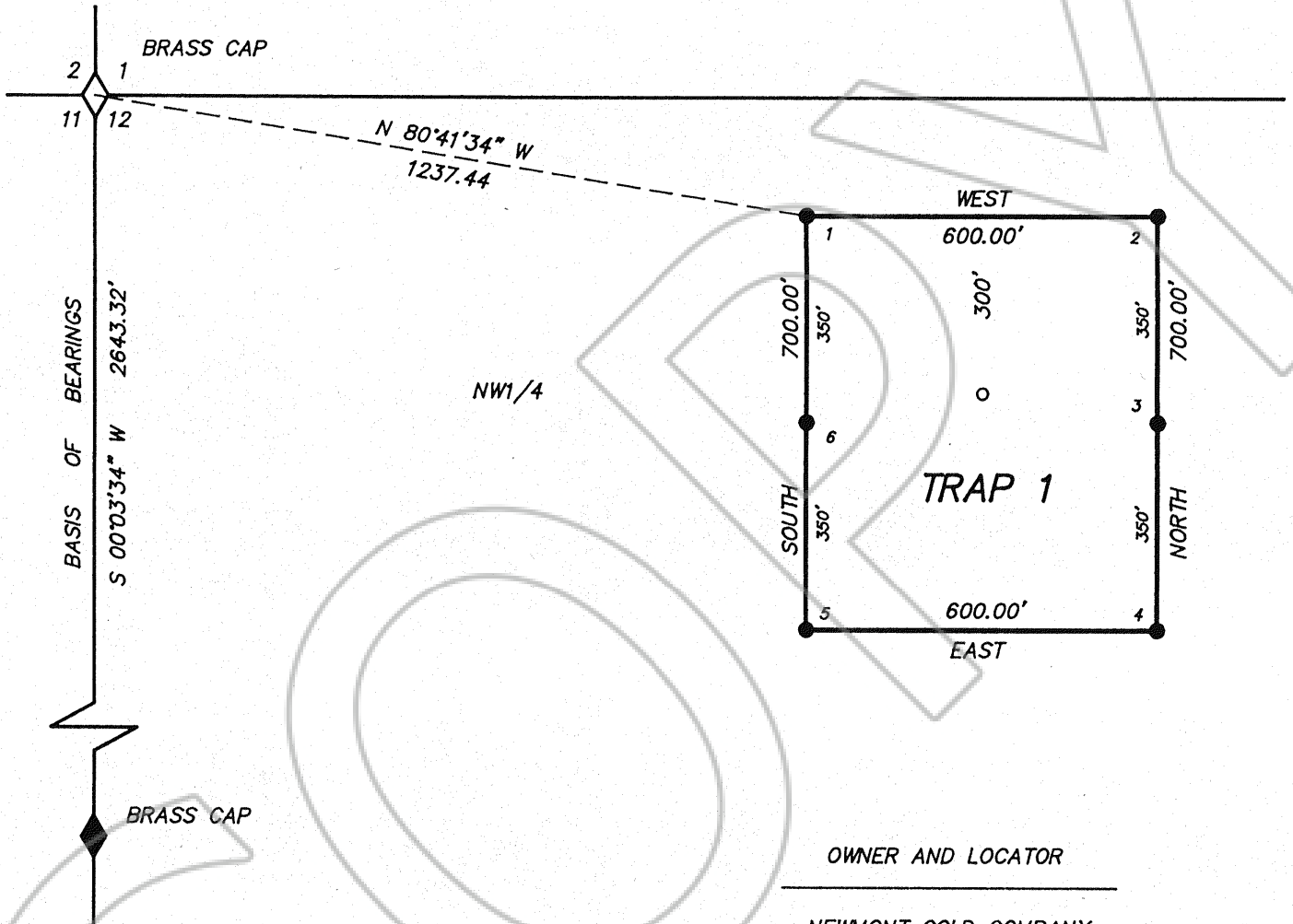
TRAP 1 WAS LOCATED ON FEBRUARY 4, 1993

ALL CORNERS AND SIDE CENTERS OF TRAP 1 WERE SET ON OR BEFORE APRIL 2, 1993.

N



SCALE : 1" = 300'



OWNER AND LOCATOR

NEWMONT GOLD COMPANY
P.O. BOX 669
CARLIN, NEVADA 89822

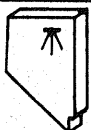
FILED AT THE REQUEST OF Newmont Exploration
on April 16 19 93, at 8 mins, past 10A M.
RECORDS of EUREKA COUNTY, NEVADA M. N. REBALEATI, Recorder
File No. 145246 Fee \$ 15

MAP OF
TRAP 1 - LODE MINING CLAIM
FOR NEWMONT GOLD COMPANY
IN SECTION 12, T35N - R50E, MDB & M
EUREKA COUNTY, NEVADA

LAND SURVEYOR'S CERTIFICATE

I, DUANE V. MERRILL, DO HEREBY CERTIFY THAT THIS IS A TRUE AND ACCURATE MAP OF THE LAND SURVEYED UNDER MY SUPERVISION AND DIRECTION AT THE INSTANCE OF NEWMONT GOLD COMPANY, AND THAT THE MONUMENTS ARE OF THE CHARACTER AND OCCUPY THE POSITIONS INDICATED HEREON AND ARE SUFFICIENT TO ENABLE THIS SURVEY TO BE RETRACED.

145246



HIGH
DESERT
ENGINEERING

640 IDAHO STREET
ELKO, NEVADA 89801
(702) 738-4053

