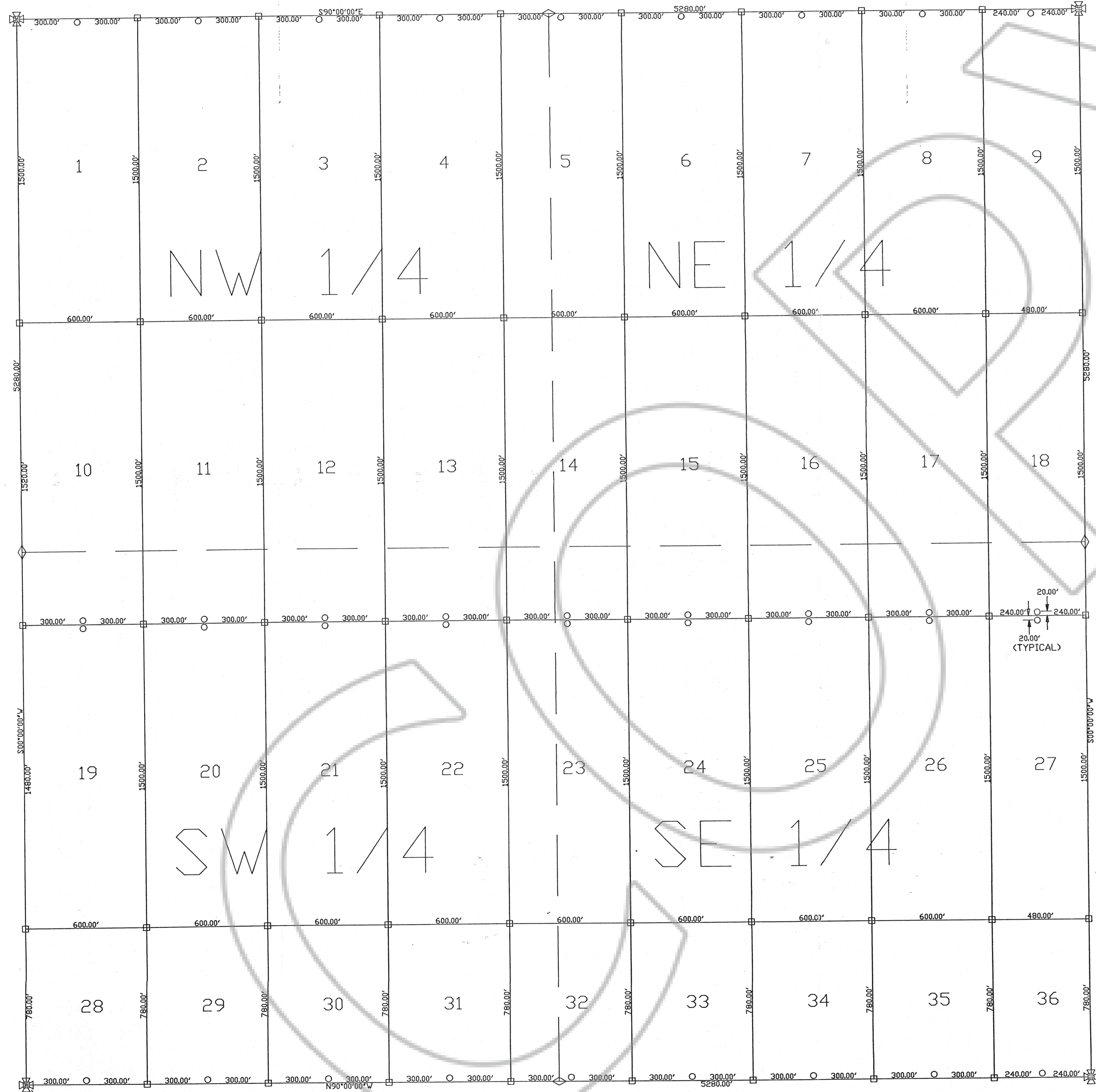


SECTION 8 T.29N.,R.49E.,M.D.B.&M.



BASIS OF BEARING

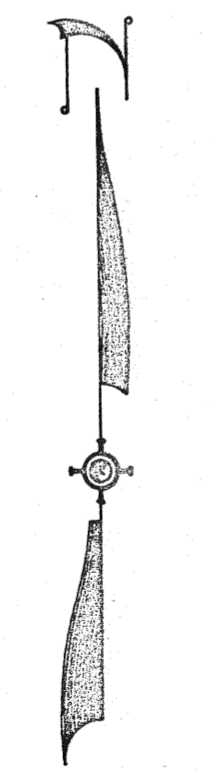
THE SOUTH LINE OF SECTION 8 T.29N.,R.49E.,M.D.B.&M. TAKEN AS SOUTH 90°00'00" EAST.

LEGEND

- SET 4"x4"x4' WOOD POST WITH ALUMINUM TAG
- SET 4"x4"x4' WOOD POST WITH LOCATION NOTICE

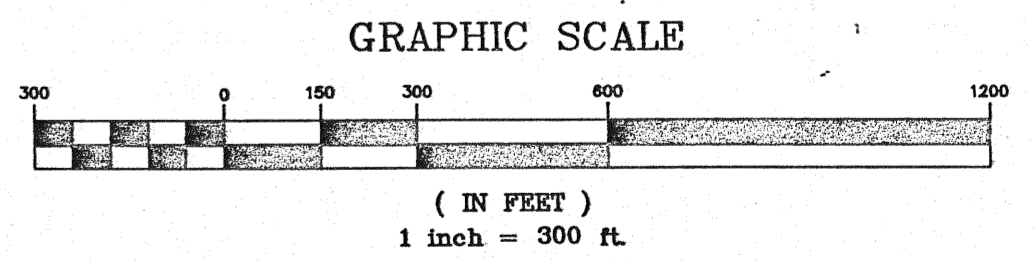
DATES OF LOCATION

CROSSLODE #1 - 36 WERE LOCATED ON APRIL 18, 1993



1" = 300'

FILED AS THE REQUEST OF *Heritage Gold Corp*
 on *April 26* 1993, at *8* mins, past *4* M.
 RECORDS OF EUREKA COUNTY, NEVADA M. N. REBALEATI, Recorder
 File No. *155588* Page *3* of *3*



FILE No. _____
 FILED AT THE REQUEST OF _____
 DATE _____, 19____
 TIME _____ M.
 EUREKA COUNTY RECORDER

CLAIM MAP
 OF
 CROSSLODE LODE MINING CLAIMS 1 - 36
 LOCATED BY:
 HERITAGE GOLD CORPORATION
 475 HOWE STREET, SUITE 701
 VANCOUVER, B.C., CANADA V6C 2B3
 IN
 SECTION 8 T.29N. R.49E. M.D.B.&M.
 EUREKA COUNTY NEVADA