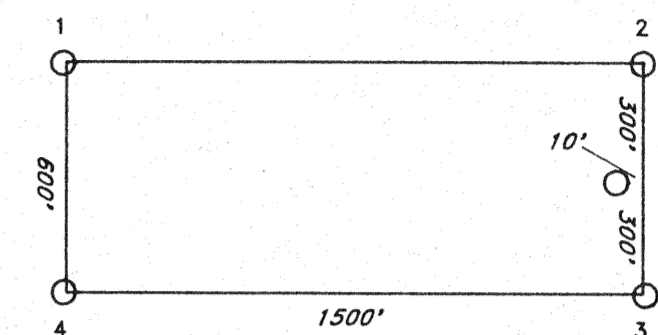


R 52 E R 53 E

| | | | | | | | |
|----|----|----|--|----|----|--|-------|
| | | 14 | | 42 | 80 | | 79 |
| | | 15 | | 44 | 43 | | 72 71 |
| 1 | 16 | 17 | | 46 | 45 | | 74 73 |
| 2 | 18 | 19 | | 48 | 47 | | 76 75 |
| 3 | 20 | 21 | | 50 | 49 | | |
| 4 | 22 | 23 | | 52 | 51 | | |
| 5 | 24 | 25 | | 54 | 53 | | |
| 6 | 26 | 27 | | 56 | 55 | | |
| 7 | 28 | 29 | | 58 | 57 | | 78 |
| 8 | 30 | 31 | | 60 | 59 | | 77 |
| 9 | 32 | 33 | | 62 | 61 | | 82 81 |
| 10 | 34 | 35 | | 64 | 63 | | 84 83 |
| 11 | 36 | 37 | | 66 | 65 | | 86 85 |
| 12 | 38 | 39 | | 68 | 67 | | 88 87 |
| 13 | 40 | 41 | | 70 | 69 | | 90 89 |

FENSTERMAKER GRAVE

TYPICAL CLAIMS



LOCATOR:

T & T EXPLORATION SERVICES INC.
236 Stewart St.
Reno, Nevada
89501

LOCATION DATES:

March 23, 1993 HALEY 14-76
March 24, 1993 HALEY 1-13, 81, 83-90
April 1, 1993 HALEY 77-80, and 82

NOTES:

All monuments are 1 1/2"x1 1/2"x4' wood posts.
All claims measure 600x1500'.
All location monuments, shown as "O", are set 10' into claim.

TIE:

The NE corner of HALEY 78 is 1135' South and 650' East of the Fenstermaker Grave shown on the Bellvue Pk. 7 1/2' USGS Quad map.

FILED AT THE REQUEST OF T & T Exploration Services
on May 12 19 93 at 44 mins past 30 M.
RECORDS OF EUREKA COUNTY, NEVADA M. N. REBALEATI, Recorder
File No. 145433 Fee \$ 1800 -



500 0 500 1000 FEET

HALEY (1-90)
LODE MINING CLAIMS
Sections 5-8, 17-18 T16N, R53E
Sections 1, 12, 13 T16N, R52E
Eureka County, Nevada

T 16 N

prepared by T & T EXPLORATION SERVICES, INC., Reno, Nevada