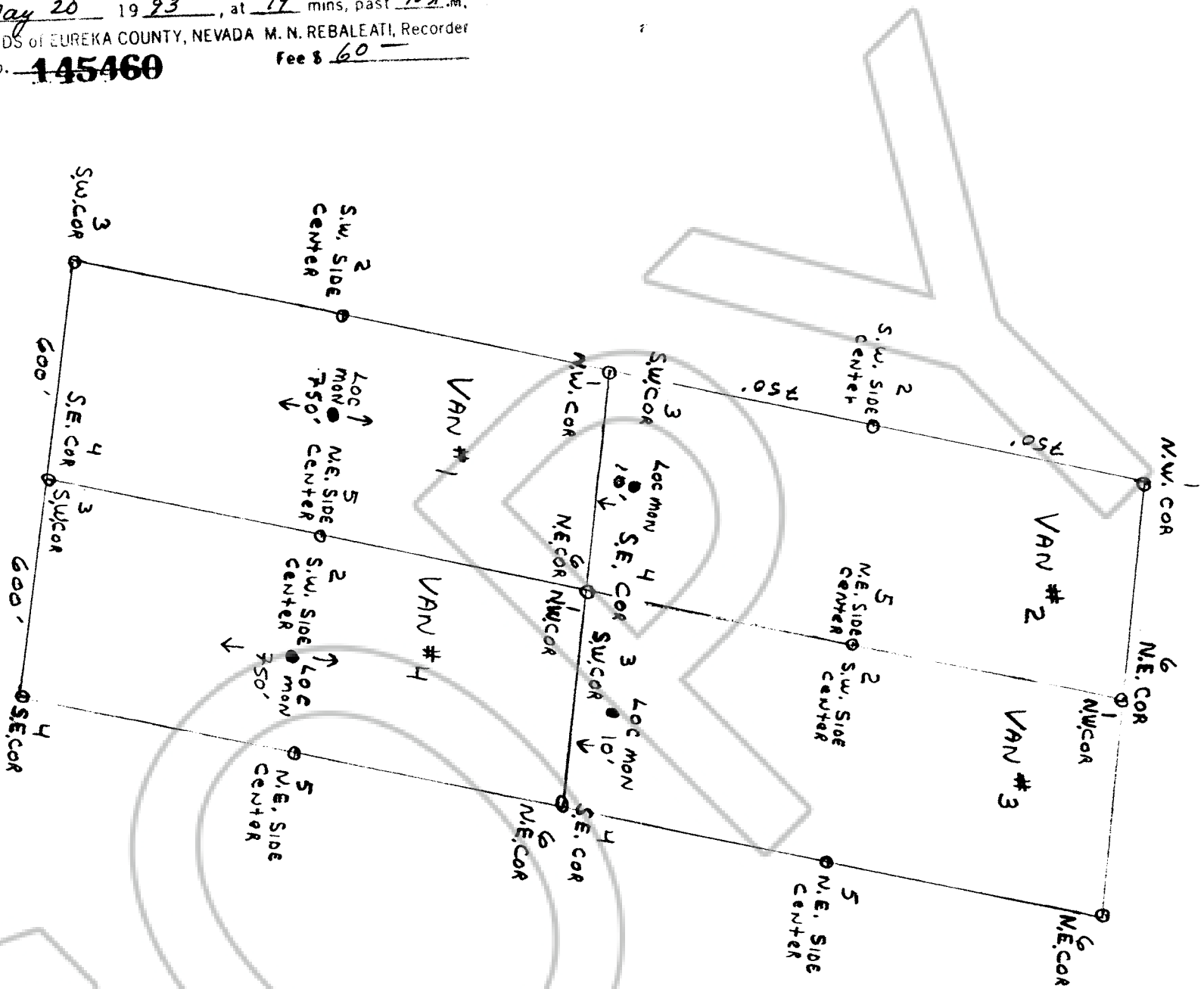
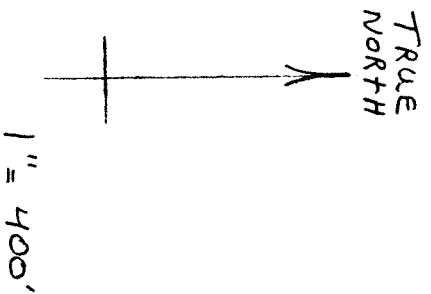


NOTE: ALL MONUMENTS ARE
4"x4" WOODEN POSTS 5' LONG

VAN #1 IS APPROX. SOUTH 20° W
APPROX. 6,000 FT. FROM SE CORNER
OF SEC. 34 T16 N R 52 E



FILED AT THE REQUEST OF Pam Scutt
on May 20 19 93, at 19 mins, past 10 A.M.
RECORDS of EUREKA COUNTY, NEVADA M. N. REBALEATI, Recorder
File No. 145460 Fee \$ 60

MAP OF VAN GROUP OF LODE CLAIMS
EUREKA COUNTY. UNKNOWN MINING DISTRICT
LOCATED 3-27-93 BY RICHARD A. MCKAY
Pamela S. Scutt, AND Nancy M. Minolletti,
CLAIMS IN SEC 3, T15 N R 52 E
2
ID

145460