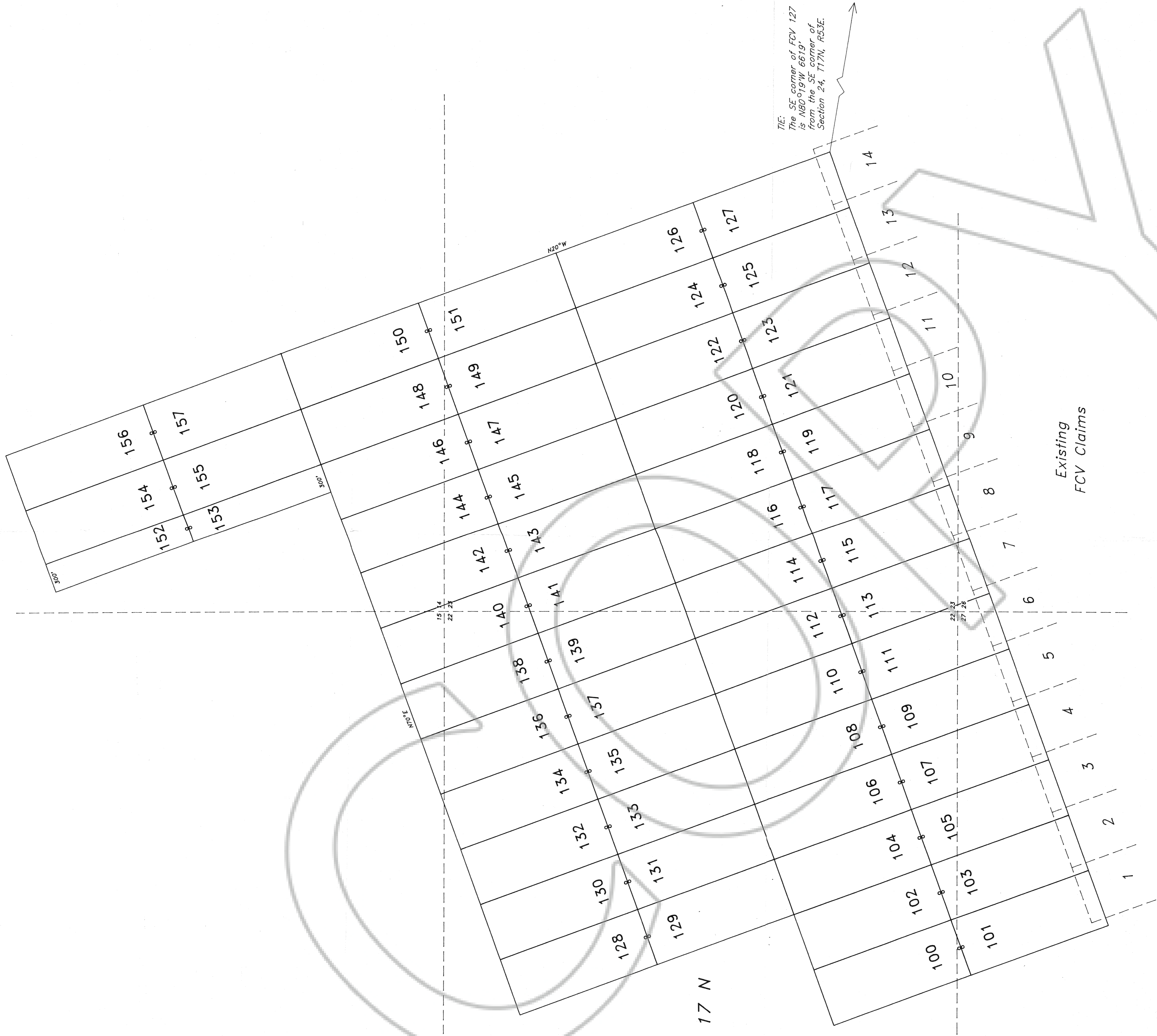


R 53 E

T 17 N



LOCATOR:

PLACER DOME U.S. Inc.
240 S. Rock Blvd., Suite 117
Reno, Nevada
89502

NOTES:

All monuments are at least 1 1/2" x 1 1/2" x 4" wood posts.
All claims measure 600x1500', except FCV 152 and 153,
which measure 300x1500'.
All location monuments, shown as "O", are set 10' into claim.

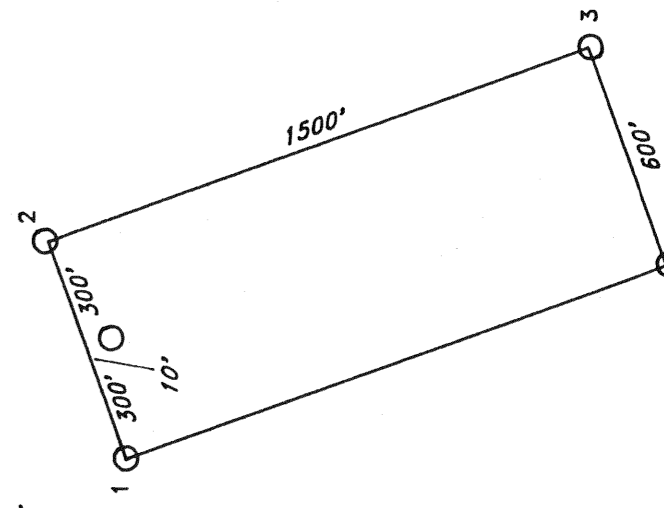
LOCATION DATE:

April 8, 1993 FCV 100-157

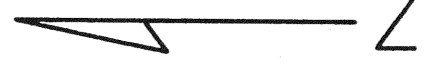
TIE:

The SE corner of FCV 127 is N80°19'W 6619'
from the SE corner of Section 24, T17N, R53E.

TYPICAL CLAIM:



FILED AT THE REQUEST OF Placer Dome
of Idaho, Inc., at 10:10 a.m., on 11-3-93
RECORDS OF EUREKA COUNTY, NEVADA M. A. REBELETTI, Recorder
FILE NO. 145738



500 0 500 1000 FEET

FCV (100-157)
LODE MINING CLAIMS

Sections 14, 15, 22, 23, 26, and 27
T17N, R53E

Eureka County, Nevada