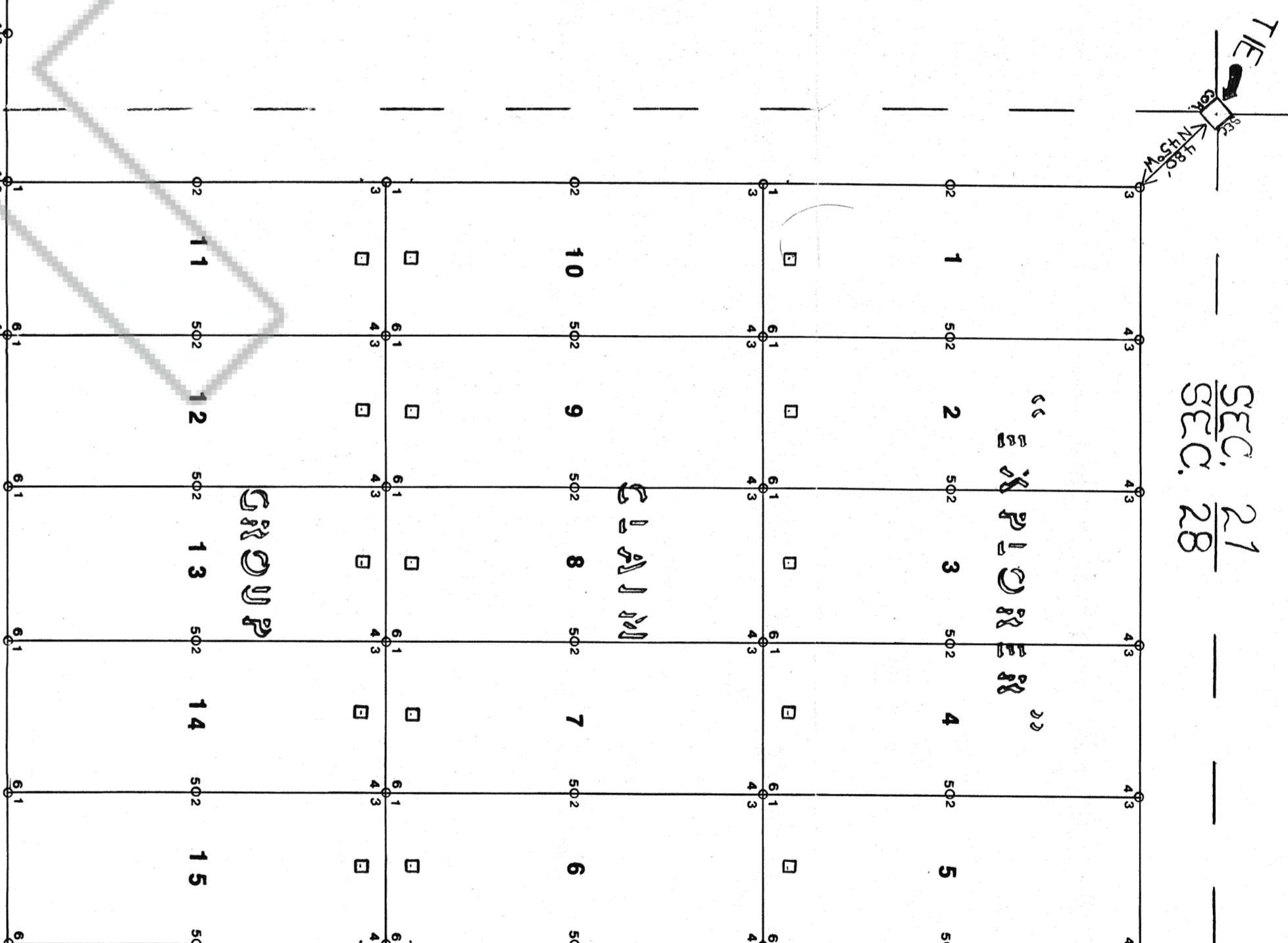


SEC. 20  
SEC. 29

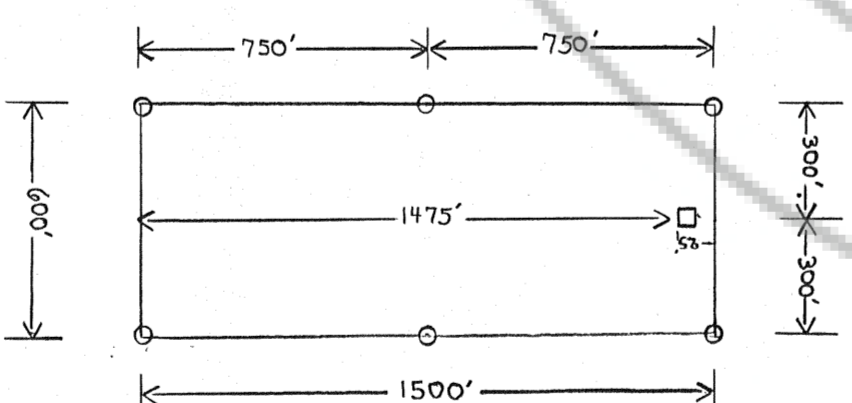
SEC. 21  
SEC. 28



“PIONEER”

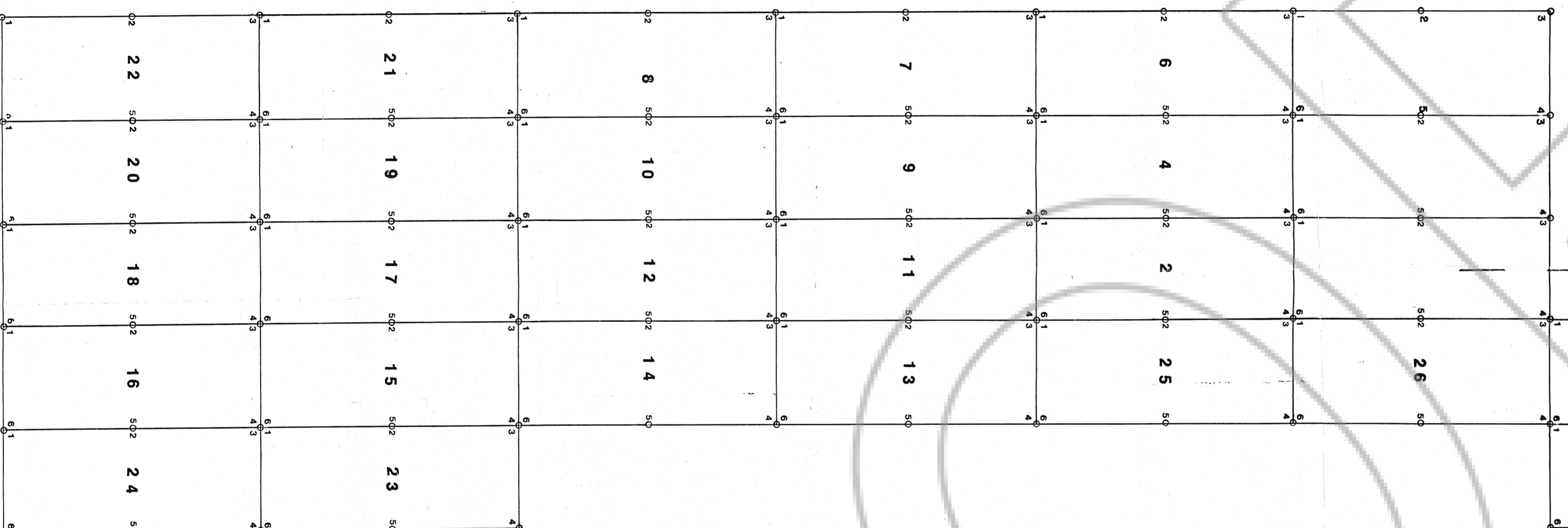
CLAIM

GROUP



TYPICAL CLAIM

- ◇ SECTION CORNER
- BOUNDARY POST
- LOCATION MONUMENT



SCALE: 1 IN. = 500 FT.

FILED AT THE REQUEST OF **Western Gold**  
 on **June 21, 1993**, at **9:58** a.m., EAST 604 A.M.  
 RECORDS DISTRICT CLERK, BENDON, W. N. REPRESENTATION  
 FILE NO. **93-2728** Fee \$ **25.00**

“PIONEER” CLAIM GROUP  
 T.24N., R.52E., SECTION 28  
 EUREKA CO. NEVADA

UNKNOWN MINING DISTRICT  
 LOCATOR: WESTERN GOLD LIMITED  
 LIABILITY CO.  
 LOCATED: JUNE 21, 1993  
 912CAPITOL AVE., CHEYENNE, WYO. 82001