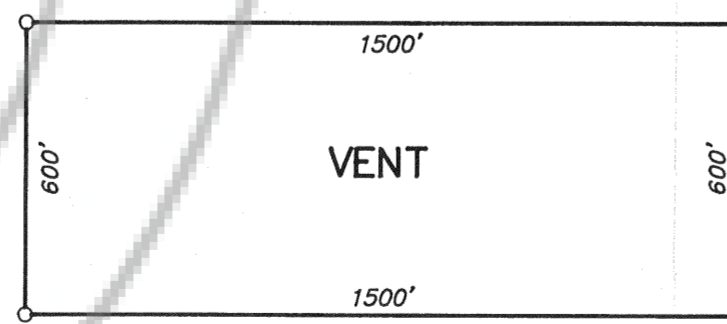
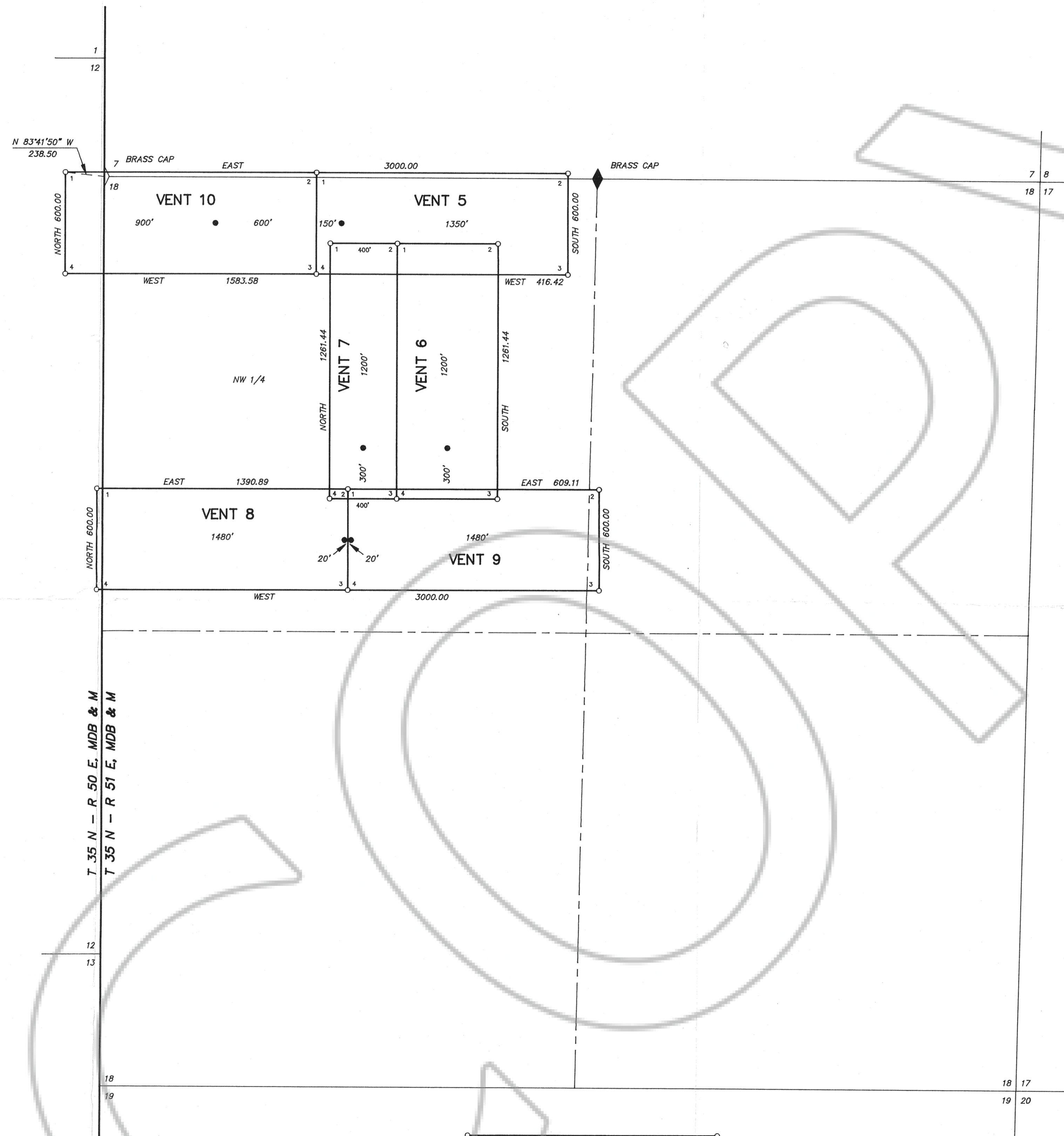


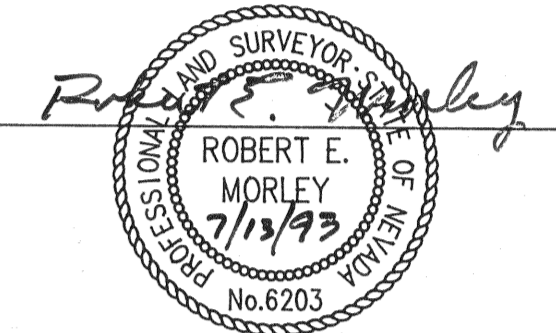
1" = 400'



TYPICAL VENT CLAIM  
(EXCEPT AS NOTED)

LAND SURVEYOR'S CERTIFICATE

I, ROBERT E. MORLEY, DO HEREBY CERTIFY THAT THIS IS A TRUE AND ACCURATE MAP OF THE LAND SURVEYED UNDER MY SUPERVISION AND DIRECTION AT THE INSTANCE OF NEWMONT GOLD COMPANY, AND THAT THE MONUMENTS ARE OF THE CHARACTER AND OCCUPY THE POSITIONS INDICATED HEREON AND ARE SUFFICIENT TO ENABLE THIS SURVEY TO BE RETRACED.



P. L. S. NO. 6203

OWNER AND LOCATOR

NEWMONT GOLD COMPANY  
555 FIFTH STREET  
ELKO, NEVADA 89801

LOCATION DATES

VENT 5 - 9 WERE LOCATED ON APRIL 29, 1993  
VENT 10 WAS LOCATED ON APRIL 30, 1993

LEGEND

- = 4" X 4" WOOD POST CLAIM CORNER
- = 4" X 4" WOOD POST LOCATION MONUMENT
- ◆ = FOUND 1/4 CORNER
- 7  
18 = FOUND SECTION CORNER

NOTES

1) BASIS OF BEARING: THE LINE BETWEEN THE NORTHWEST CORNER AND THE NORTH 1/4 CORNER OF SECTION 18, T35N - R51E, MDB & M TAKEN AS S 89° 53' 49" E.



SCALE: 1" = 400'

**NEWMONT GOLD COMPANY**  
MAP  
OF  
**VENT 5-10 LODE CLAIMS**  
IN  
SECTION 12, T.35 N., R.50 E., M.D.B. & M.  
SECTION 7 & 18, T.35 N., R.51 E., M.D.B. & M.  
EUREKA COUNTY, NEVADA

FILED AT THE REQUEST OF Newmont Gold Co  
on July 15, 1993, at 58 mins, past 10 A.M.  
RECORDS OF EUREKA COUNTY, NEVADA M. N. REBALEATI, Recorder  
File No. 145818 Fee \$ 75.00

HIGH  
DESERT  
ENGINEERING

640 IDAHO STREET  
ELKO, NEVADA 89801  
(702) 738-4053

93095