

AFFIDAVIT AND NOTICE OF INTENT TO HOLD MINING CLAIM(S) AND SITE(S)

STATE OF ~~NEW YORK~~ NEW YORK

COUNTY OF WESTCHESTER

SS.)

146110

TO ALL WHOM IT MAY CONCERN:

The undersigned certifies that the owner ~~intends to hold~~ the mining claim(s), ~~and site(s)~~ listed below from 12:00 p.m. on September 1 of the year before this affidavit was made and recorded, until 11:59 a.m. on September 1 of the year that this affidavit was made and recorded. The claims are located in Section(s) as set forth in ~~the~~ exhibit attached, ~~in the~~ MOUNT HOPE ~~mining~~ district, in KUREKA County, Nevada.

Name of claim(s) or site(s): BIM Serial No(s):

See Exhibit "A", Attached

The claim map showing said claim(s) is ~~attached hereto~~ annexed hereto, see attached Exhibit "B".

Name and address

of owner or claimant:

MOUNT HOPE MINES, INC.

65 West Red Oak Lane

White Plains, NY 10604

Dated this 12th day of August, 1993. BY: *[Signature]*

Harold L. Drimmer

owner, ~~as set forth in~~ Recorder's Stamp

Subscribed and sworn to before

me this 12 day of August, 1993.

JACK L. HALL
Notary Public, State of New York
No. 01-1942598
Qualified in Westchester County
Commission Expires Sept. 28, 1994

NOTARY PUBLIC

Suggested Form-Nevada Department of Minerals
Nevada-Affidavit/Notice of Intent to hold, NRS 517.230
(Revised 7/14/93)

BOOK 249 PAGES 75

EXHIBIT "A" LIST OF CLAIMS
MOUNT HOPE MINES, INC.
MINING CLAIMS EXHIBITS

| CLAIM | NO. | ACR. | TRP. | MMR. | MIN. INT. | BOOK/PAGE |
|--------|-------|-------|------|-------|-----------|-----------|
| BOWSER | 00001 | 18 | ZZN | 52E | NMC97479 | 0100 0488 |
| BOWSER | 00001 | 13 | ZZN | 51.5E | NMC97480 | 0100 0489 |
| BOWSER | 00002 | 12/13 | ZZN | 52E | NMC97481 | 0100 0490 |
| BOWSER | 00003 | 13 | ZZN | 51.4 | NMC97482 | 0100 0491 |
| BOWSER | 00004 | 12/13 | ZZN | 51.5 | NMC97483 | 0100 0492 |
| BOWSER | 00004 | 1 | ZZN | 51E | NMC97484 | 0100 0493 |
| BOWSER | 00006 | 18 | ZZN | 52E | NMC97485 | 0100 0494 |
| BOWSER | 00009 | 18 | ZZN | 52E | NMC97486 | 0100 0495 |
| BOWSER | 00011 | 7/18 | ZZN | 52E | NMC97487 | 0100 0497 |
| BOWSER | 00012 | 7 | ZZN | 52E | NMC97488 | 0100 0498 |
| BOWSER | 00012 | 12 | ZZN | 51.5 | NMC97489 | 0100 0499 |
| BOWSER | 012-A | 7 | ZZN | 52E | NMC97490 | 0100 0500 |
| BOWSER | 012-A | 12 | ZZN | 51.5 | NMC97491 | 0100 0501 |
| BOWSER | 00014 | 18 | ZZN | 52E | NMC97492 | 0100 0502 |
| BOWSER | 00015 | 18 | ZZN | 52E | NMC97493 | 0100 0503 |
| BOWSER | 00021 | 12 | ZZN | 51.5 | NMC97494 | 0100 0504 |
| BOWSER | 021-A | 12/13 | ZZN | 51.5 | NMC97495 | 0100 0505 |
| BOWSER | 00023 | 12 | ZZN | 51.5 | NMC97496 | 0100 0506 |
| BOWSER | 023-A | 12 | ZZN | 51.5 | NMC97497 | 0100 0507 |
| BOWSER | 00025 | 12 | ZZN | 51.5 | NMC97498 | 0100 0508 |
| BOWSER | 025-A | 12 | ZZN | 51.5 | NMC97499 | 0100 0509 |
| BOWSER | 025-A | 1 | ZZN | 51E | NMC97500 | 0100 0510 |
| BOWSER | 00027 | 12 | ZZN | 51.5 | NMC97501 | 0100 0511 |
| BOWSER | 00027 | 1 | ZZN | 51E | NMC97502 | 0100 0512 |
| BOWSER | 027-A | 12 | ZZN | 51.5 | NMC97503 | 0100 0513 |
| BOWSER | 027-A | 1 | ZZN | 51E | NMC97504 | 0100 0514 |
| BOWSER | 00029 | 12 | ZZN | 51.5 | NMC97505 | 0100 0515 |
| BOWSER | 00029 | 1 | ZZN | 51E | NMC97506 | 0100 0516 |
| BOWSER | 033-A | 1 | ZZN | 51E | NMC97507 | 0100 0517 |
| BOWSER | 00035 | 1 | ZZN | 51E | NMC97508 | 0100 0518 |
| BOWSER | 035-A | 1 | ZZN | 51E | NMC97509 | 0100 0519 |
| BOWSER | 00037 | 1 | ZZN | 51.5 | NMC97510 | 0100 0520 |
| BOWSER | 037-A | 1 | ZZN | 51E | NMC97511 | 0100 0521 |
| BOWSER | 00061 | 1,2* | ZZN | 51E | NMC97512 | 0200 0522 |
| BOWSER | 00062 | 1,2* | ZZN | 51E | NMC97513 | 0200 0523 |
| BOWSER | 00063 | 1 | ZZN | 51E | NMC97514 | 0100 0524 |
| BOWSER | 00064 | 1 | ZZN | 51E | NMC97515 | 0100 0525 |
| BOWSER | 00065 | 1 | ZZN | 51E | NMC97516 | 0100 0526 |

BOOK 249-PAGES 76

MOUNT HOPE MINES, INC.
MINING CLAIMS EXHIBITS

CLAIM NO. SECT. TWP. RGE. MIN. AC. BOOK/PAGE

| | | | | | | | |
|-------|-----------------|--------|-------|-----|-------|----------|-----------|
| 00066 | BOWSER | 1 | 51E | 22N | 51E | RMC97535 | 0100 0565 |
| 00067 | BOWSER | 1 | 51E | 22N | 51E | RMC97536 | 0100 0566 |
| 00068 | BOWSER | 1 | 51E | 22N | 51E | RMC97537 | 0100 0567 |
| 00069 | BOWSER | 1 | 51E | 22N | 51E | RMC97538 | 0100 0568 |
| 00070 | BOWSER | 1 | 51E | 22N | 51E | RMC97539 | 0100 0569 |
| 00073 | BOWSER | 1,2* | 51E | 22N | 51E | RMC97542 | 0100 0572 |
| 00074 | BOWSER | 1,2* | 51E | 22N | 51E | RMC97543 | 0100 0573 |
| 00075 | BOWSER | 1 | 51E | 22N | 51E | RMC97544 | 0100 0574 |
| 00076 | BOWSER | 1,11* | 51E | 22N | 51E | RMC97545 | 0100 0575 |
| 00076 | BOWSER | 12 | 51E | 22N | 51E | RMC97565 | 0100 0487 |
| 00000 | BOWSER FRACTION | 13 | 51.5 | 22N | 51E | RMC97566 | 0100 0487 |
| 00014 | BOWSER FRACTION | 18 | 52E | 22N | 52E | RMC97567 | 0100 0501 |
| 00015 | BOWSER FRACTION | 18 | 52E | 22N | 52E | RMC97567 | 0100 0503 |
| 00001 | HOP | 12 | 51E | 22N | 51E | RMC97571 | 0100 0576 |
| 00003 | HOP | 12 | 51E | 22N | 51E | RMC97573 | 0100 0578 |
| 00005 | HOP | 12 | 51E | 22N | 51E | RMC97575 | 0100 0580 |
| 00007 | HOP | 12 | 51E | 22N | 51E | RMC97577 | 0100 0582 |
| 00009 | HOP | 12 | 51E | 22N | 51E | RMC97579 | 0100 0584 |
| 00038 | HOP | 7 | 52E | 22N | 52E | RMC97581 | 0153 0496 |
| 00048 | HOP | 7,18 | 52E | 22N | 52E | RMC97581 | 0100 0475 |
| 00011 | HOP | 12 | 51E | 22N | 51E | RMC97581 | 0100 0586 |
| 00013 | HOP | 12 | 51E | 22N | 51E | RMC97583 | 0100 0588 |
| 00015 | HOP | 12 | 51E | 22N | 51E | RMC97585 | 0100 0590 |
| 00017 | HOP | 12 | 51E | 22N | 51E | RMC97587 | 0100 0592 |
| 00019 | HOP | 11,12* | 51E | 22N | 51E | RMC97589 | 0100 0594 |
| 00021 | HOP | 12,12* | 51E | 22N | 51E | RMC97591 | 0100 0596 |
| 00023 | HOP | 11* | 51E | 22N | 51E | RMC97593 | 0100 0598 |
| 00025 | HOP | 12 | 51E | 22N | 51E | RMC97595 | 0100 0600 |
| 00027 | HOP | 13 | 51.5 | 22N | 51E | RMC97597 | 0101 0002 |
| 00027 | HOP | 12 | 51E | 22N | 51E | RMC97599 | 0101 0004 |
| 00029 | HOP | 13 | 51.5 | 22N | 51E | RMC97601 | 0101 0006 |
| 00031 | HOP | 13 | 51.5 | 22N | 51E | RMC97603 | 0101 0008 |
| 00035 | HOP | 13,24 | 51.5 | 22N | 51.5 | RMC97605 | 0101 0010 |
| 00037 | HOP | 12,24 | 51.5 | 22N | 51.5 | RMC97607 | 0101 0012 |
| 00037 | HOP | 18 | 52E | 22N | 52E | RMC97609 | 0101 0014 |
| 00039 | HOP | 13,24 | 51.5 | 22N | 51.5 | RMC97609 | 0101 0014 |
| 00039 | HOP | 18,24 | 52E | 22N | 52E | RMC97611 | 0101 0016 |
| 00041 | HOP | 18,19 | 52E | 22N | 52E | RMC97613 | 0101 0018 |
| 00043 | HOP | 18 | 52E | 22N | 52E | RMC97615 | 0101 0020 |
| 00045 | HOP | 18,19 | 52E | 22N | 52E | RMC97640 | 0101 0045 |
| 00070 | HOP | 13 | 51.5E | 22N | 51.5E | RMC97641 | 0101 0046 |
| 00071 | HOP | 13 | 51.5E | 22N | 51.5E | RMC97641 | 0101 0046 |

BOOK 249 PAGES 77

MOUNT HOPE MINES, INC.
MINING CLAIMS EXHIBITS

CLAIM NO. ACRES TWP. RANG. SEC. 4 OR 8 BOOK/PAGE

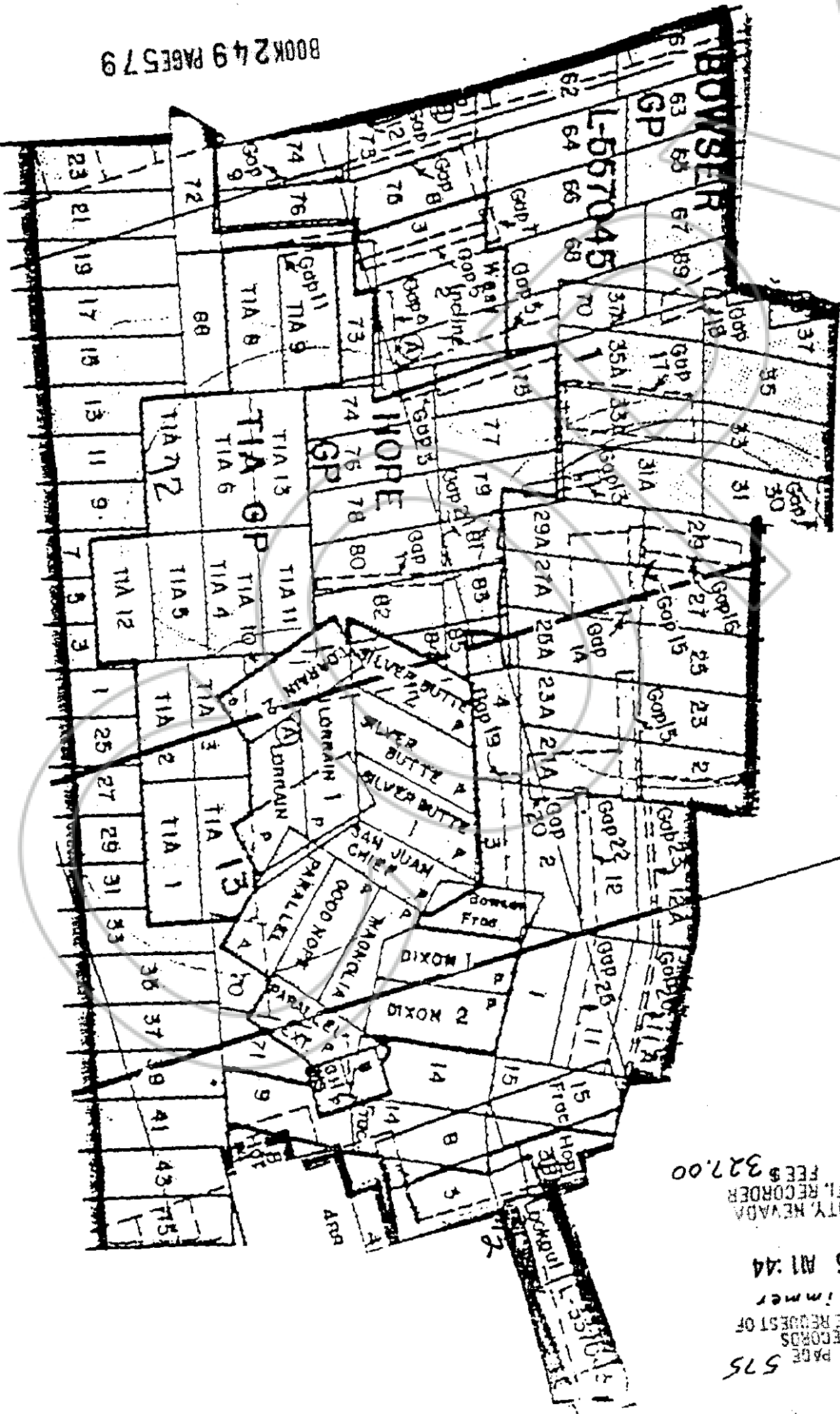
| | | | | | |
|-----------|----------|------|-----|--------|--------------|
| 0101 0047 | NMC97642 | 51E | Z2N | 11,12* | HOPE |
| 0101 0048 | NMC97543 | 51E | Z2N | 1,12 | HOPE |
| 0101 0049 | NMC97644 | 51E | Z2N | 1,12 | HOPE |
| 0101 0050 | NMC97645 | 51E | Z2N | 11 | HOPE |
| 0101 0051 | NMC97646 | 51E | Z2N | 1,12 | HOPE |
| 0101 0052 | NMC97647 | 51E | Z2N | 1 | HOPE |
| 0101 0053 | NMC97648 | 51E | Z2N | 1,12 | HOPE |
| 0101 0054 | NMC97649 | 51E | Z2N | 1 | HOPE |
| 0101 0055 | NMC97650 | 51E | Z2N | 1,12 | HOPE |
| 0101 0056 | NMC97651 | 51E | Z2N | 1 | HOPE |
| 0101 0057 | NMC97652 | 51E | Z2N | 12 | HOPE |
| 0101 0058 | NMC97653 | 51E | Z2N | 1,12 | HOPE |
| 0101 0059 | NMC97654 | 51E | Z2N | 12 | HOPE |
| 0101 0060 | NMC97655 | 51E | Z2N | 1,12 | HOPE |
| 0101 0062 | NMC97658 | 51.5 | Z2N | 12,13 | HOPE |
| 0101 0066 | NMC97658 | 51E | Z2N | 12(CF) | HOPE |
| 0101 0067 | NMC97658 | 51E | Z2N | 1,12 | WEST INCLINE |
| 0101 0068 | NMC97659 | 51E | Z2N | 1,12 | WEST INCLINE |
| 0101 0069 | NMC97570 | 51E | Z2N | 1,12 | WEST INCLINE |
| 0101 0165 | NMC97660 | 51.5 | Z2N | 13 | TIA |
| 0101 0167 | NMC97661 | 51.5 | Z2N | 13 | TIA |
| 0101 0169 | NMC97662 | 51.5 | Z2N | 13 | TIA |
| 0101 0171 | NMC97663 | 51.5 | Z2N | 13 | TIA |
| 0101 0173 | NMC97664 | 51E | Z2N | 12 | TIA |
| 0101 0175 | NMC97665 | 51E | Z2N | 12 | TIA |
| 0101 0177 | NMC97666 | 51E | Z2N | 12 | TIA |
| 0101 0179 | NMC97667 | 51E | Z2N | 12 | TIA |
| 0101 0181 | NMC97668 | 51E | Z2N | 12 | TIA |
| 0101 0183 | NMC97669 | 51E | Z2N | 12 | TIA |
| 0101 0185 | NMC97670 | 51E | Z2N | 12 | TIA |
| 0101 0187 | NMC97671 | 51E | Z2N | 12 | TIA |
| 0101 0189 | NMC97672 | 51E | Z2N | 12 | TIA |
| 0101 0191 | NMC97673 | 51E | Z2N | 12 | TIA |
| 0101 0064 | NMC23201 | 52E | Z2N | 18 | LOOKOUT |
| 0101 0065 | NMC23202 | 52E | Z2N | 18 | LOOKOUT |
| 0101 0066 | NMC23203 | 52E | Z2N | 18 | LOOKOUT |

* = proposed
CF = Cont'd. find (on map)

BOOK 249 PAGES 78

EXHIBIT "B" : MAP OF CLAIM BLOCK REV. 8/93

R. 512 E



BOOK 249 PAGE 579

BOOK 249 PAGE 575
 OFFICIAL RECORDS
 RECORDED AT THE REQUEST OF
 Harold Drimmer
 93 AUG 16 AM 11:44
 EUREKA COUNTY, NEVADA
 M. REBALFATI, RECORDER
 FILE NO. _____
 FEE \$ 327.00

146110