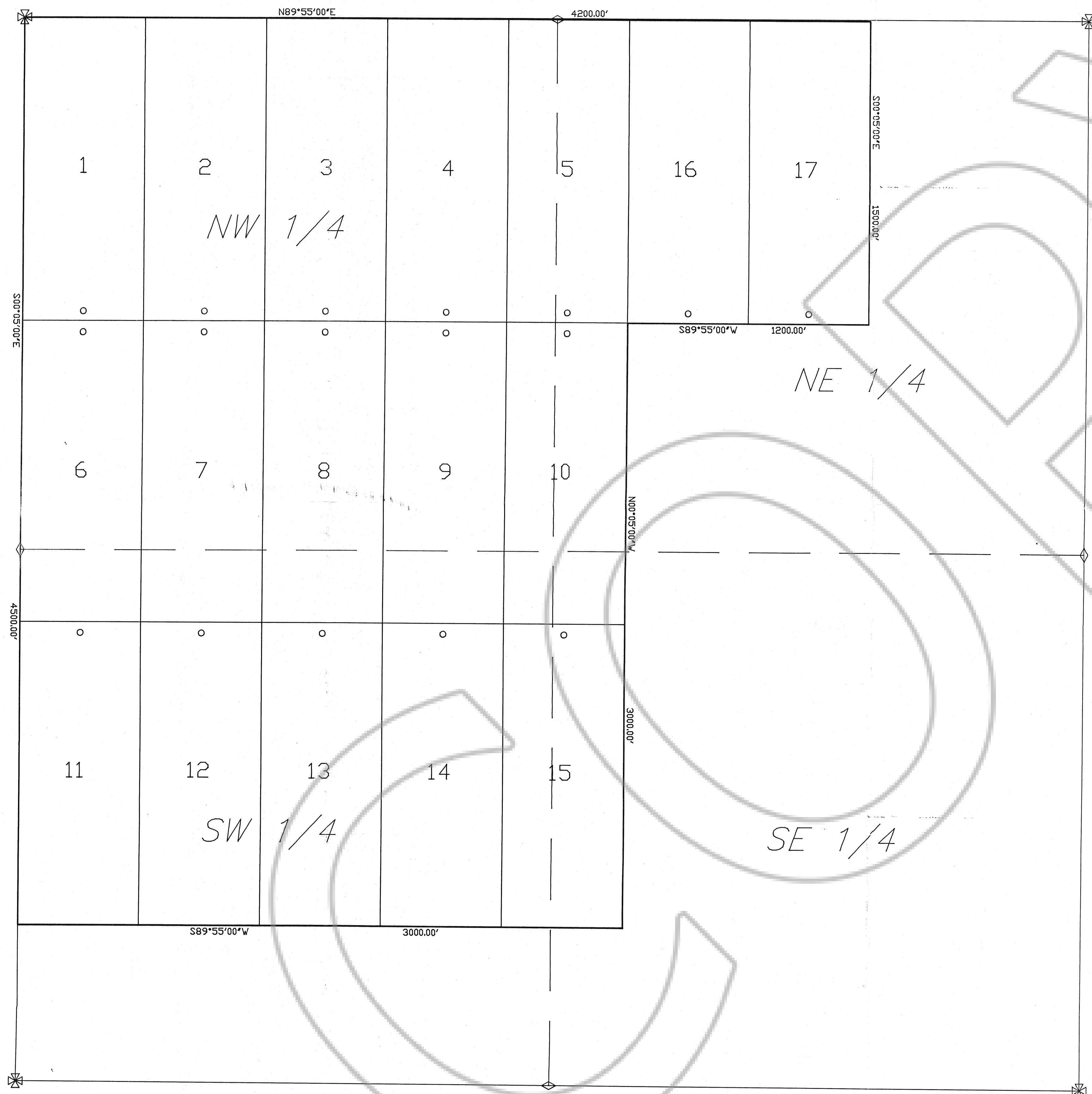


SECTION 8
T. 28 N., R. 49 E. M.D.B. & M.



BASIS OF BEARING

THE WEST LINE OF SECTION 8 T.28N.,R.49E.,M.D.B.&M.
TAKEN AS SOUTH 00°05'00\"/>

DATES OF COMPLETION

LAMP 1 - 17 WERE COMPLETED ON
30 Aug 1993

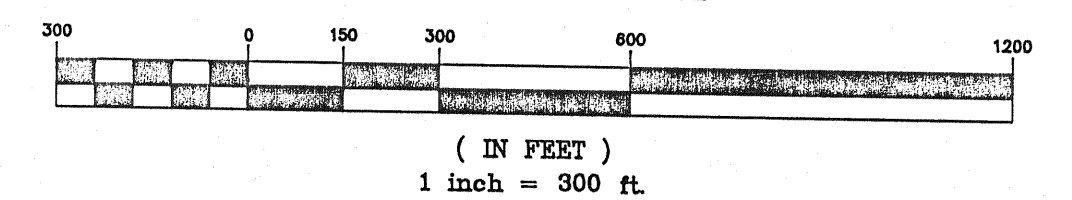
LEGEND

○ SET 2\"/>

NOTES

1. ALL CLAIMS ARE 600' X 1500' UNLESS OTHERWISE SHOWN.
2. LOCATION MONUMENTS ARE LOCATED 50' FROM THE ENDLINES OF CLAIMS AS SHOWN.
3. A 2\"/>

GRAPHIC SCALE



FILE No. **146389**
FILED AT THE REQUEST OF
American Fibre Corp
DATE *Aug 27*, 19*93*
TIME *12:28* *P.*M.
M.R. Behalati
EUREKA COUNTY RECORDER

CLAIM MAP
OF
LAMP 1 - 17 LODE MINING CLAIMS
LOCATED BY:
AMERICAN FIBRE CORPORATION
475 HOWE STREET SUITE 701
VANCOUVER, B.C., CANADA V6C 2B3
IN
SECTION 8 T.28N. R.49E. M.D.B.&M.
EUREKA COUNTY NEVADA