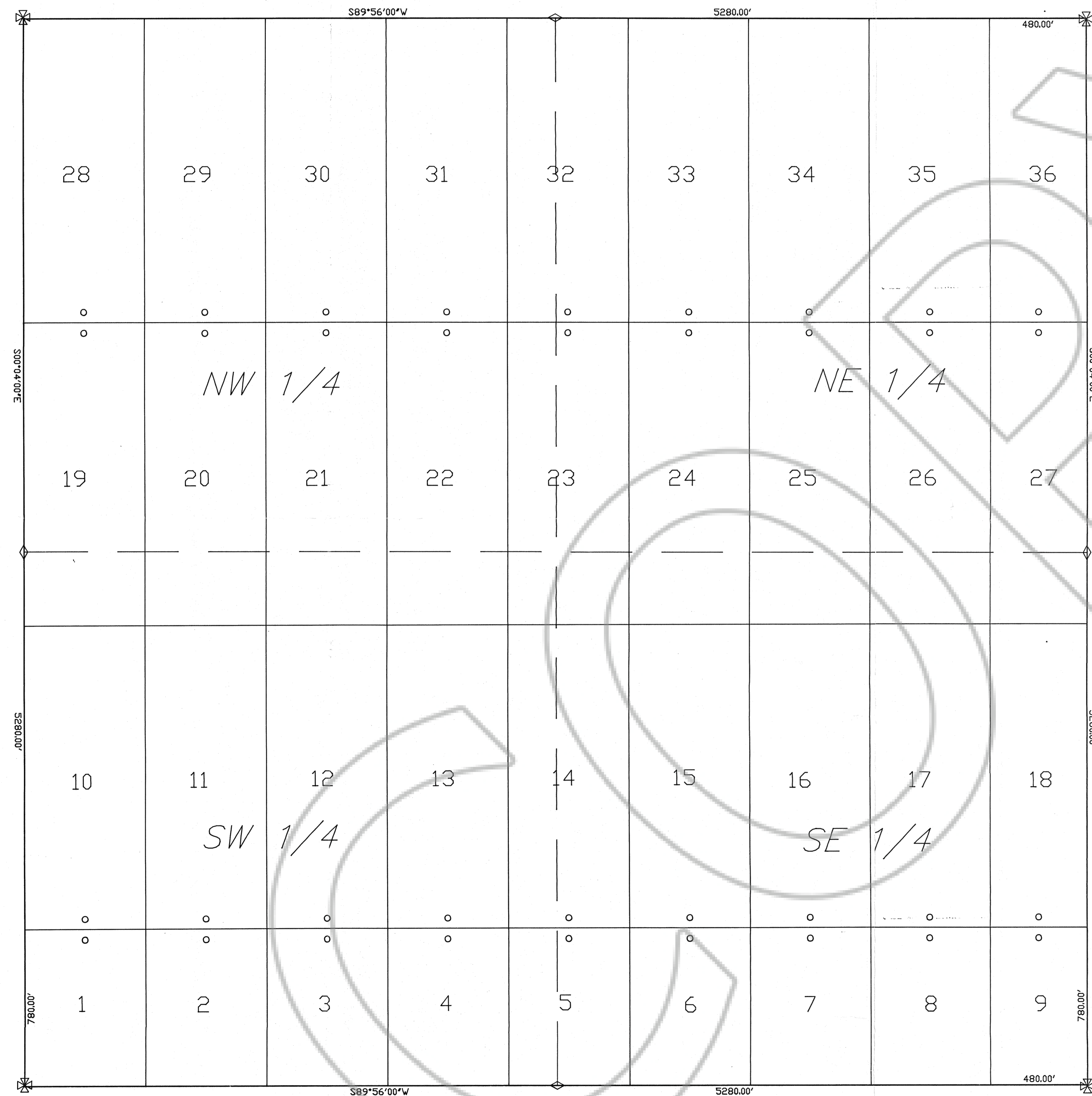


SECTION 32
T. 29 N., R. 49 E. M.D.B. & M.



BASIS OF BEARING

THE EAST LINE OF SECTION 32 T.29N.,R.49E.,M.D.B.&M.
TAKEN AS SOUTH 00°04'00\"/>

DATES OF COMPLETION

PETE 1 - 36 WERE COMPLETED ON
22 JULY 1993

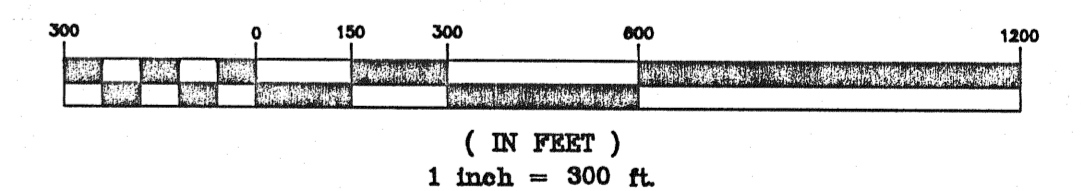
LEGEND

○ SET 2\"/>

NOTES

1. ALL CLAIMS ARE 600' X 1500' UNLESS OTHERWISE SHOWN.
2. LOCATION MONUMENTS ARE LOCATED 50' FROM THE ENDLINES OF CLAIMS AS SHOWN.
3. A 2\"/>

GRAPHIC SCALE



FILE No. **146426**
FILED AT THE REQUEST OF
American Fibre Corp
DATE *Aug 27* 1993
TIME *12:50* P. M.
M.W. Bekaleati
EUREKA COUNTY RECORDER

CLAIM MAP
OF
PETE 1 - 36 LODE MINING CLAIMS

LOCATED BY:
AMERICAN FIBRE CORPORATION
475 HOWE STREET SUITE 701
VANCOUVER, B.C., CANADA V6C 2B3

IN
SECTION 32 T.29N. R.49E. M.D.B.&M.
EUREKA COUNTY NEVADA