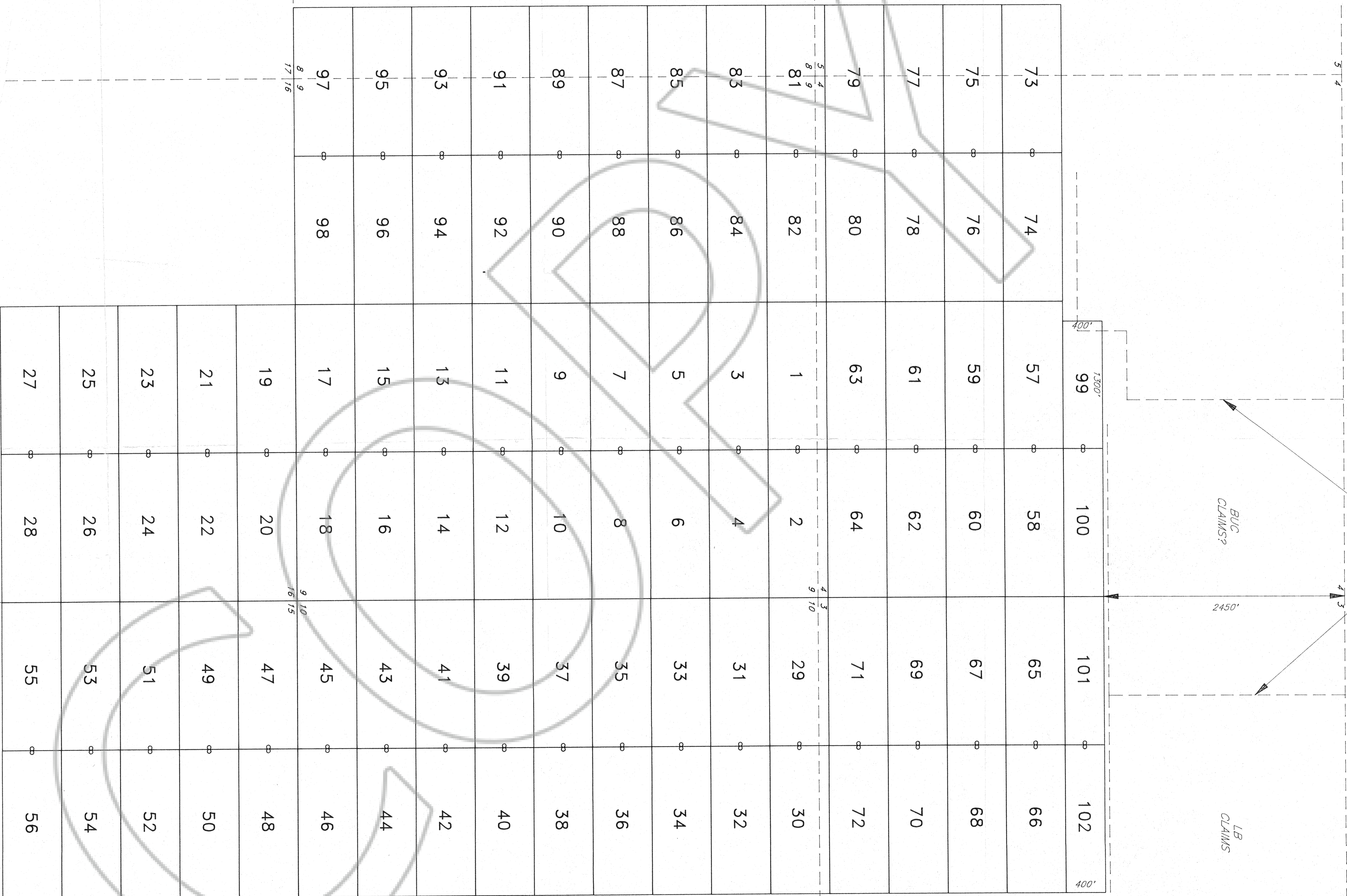


T 27 N

R 49 E

Approximate Boundary of Valid Claim Blocks

T 26 N



LOCATOR:

PLACER DOME U.S., INC.
240 South Rock Blvd., Suite 117
Reno, NV 89502

LOCATION:

Sections 3-5, 8-10, 15, 16 (projected) T26N, R49E, MDBM
Eureka County, Nevada

THE POINT:

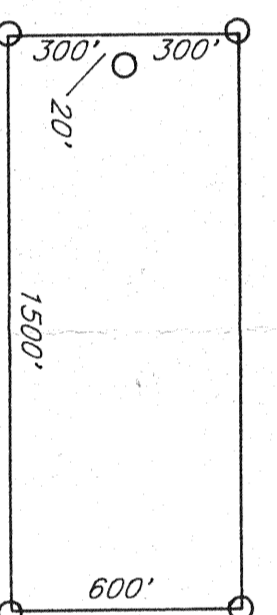
The NE corner of BF 100 is located 2450' South and 0' West from the NE corner of Section 4, T26N, R49E, MDBM (projected).

All claims are 1500' x 600' with location monuments located 20' in from end lines, except the following:
BF 99 - 1300' x 400', BF 100-102 - 1500' x 400'

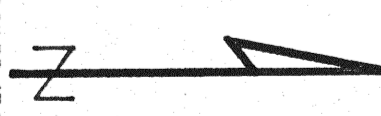
LOCATION DATES:

June 14, 1993 BF 15-28, 43-56
June 15, 1993 BF 1-14, 29-42
August 12, 1993 BF 57-102

TYPICAL CLAIM:



149723



FILED BY THE REQUEST OF *Contract Contingent*
 on *Sept 23 1993* at *RENO* in the *PLACER* District
 RECORDS OF EUREKA COUNTY, NEVADA M. N. RECALLEN, Recorder
 File No. **149723** Fee \$ **550**

BF 1-102 LODE MINING CLAIMS	
Scale: 1"=500'	located: 6/14-15, 8/12/1993
Drawn By: CH	Completed: 8/12/1993
By: CONTRACT GEOLOGICAL SERVICES, INC.	Revised:
1395 Greg St., Suite 108, Sparks, Nevada 89431	Map 1 of 1