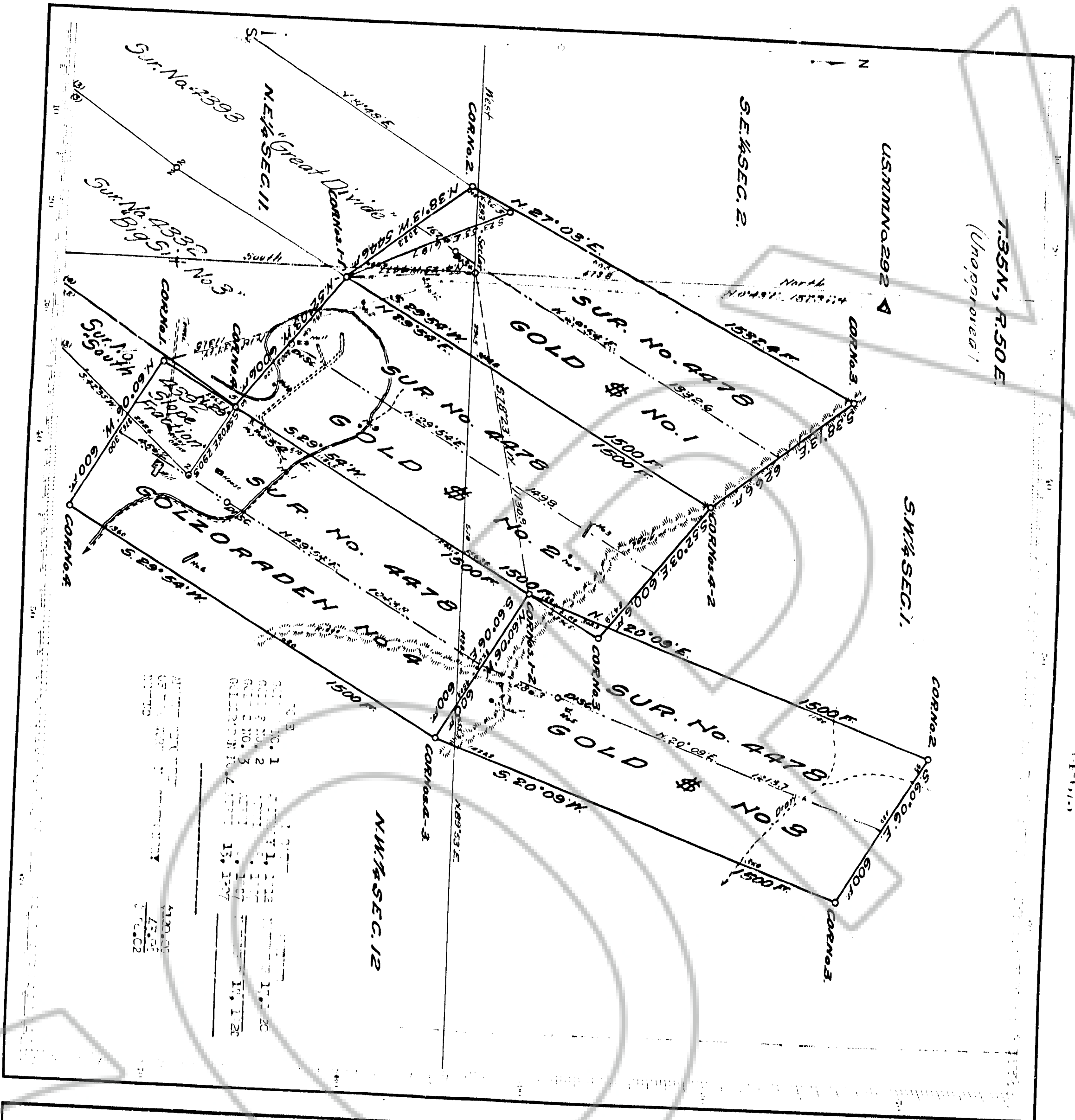


I CERTIFY THIS PAGE BEARING THE BUREAU OF LAND MANAGEMENT SEAL IS A TRUE COPY OF A DOCUMENT ON FILE IN THE STATE OFFICE, RENO, NEVADA.
 DATE: 9-28-93
 Janelle F. Reynolds
 CERTIFYING OFFICER



204570

FILED AT THE REQUEST OF Neumont
 on Oct 6 1993 55 mins. P.M. 9A.M.
 RECORDS SECTION, COUNTY OF WYOMING, LAND RECORDS DIVISION
 File No. 146889 Fee \$ 2.00

Section 1, Township 35N, Range 50E
 Plat No. 4276
 Land District

PLAT
 OF THE CLAIM OF
 ERIC JOHN BELL, MINER
 KNOWN AS THE
 GRIFFIN & CO. L. MINE & NO. 2, GOLD & NO. 3 AND
 GILBERTSON & CO. L. MINE & NO. 4

BY ETM COUNTY CLERK, MINING DISTRICT,
 WYOMING

WITNESSED my hand and the seal of the County of Wyoming, this 6th day of October, 1993.

NEWMONT MINING COMPANY
 300 West 10th Street
 Casper, Wyoming 82401
 307-235-1000

THE STATE OF WYOMING, County of Lincoln, ss. I, John D. Williams, County Clerk, do hereby certify that the foregoing is a true and correct copy of the original plat on file in the County Clerk's office, this 6th day of October, 1993.

JOHN D. WILLIAMS
 County Clerk

146889