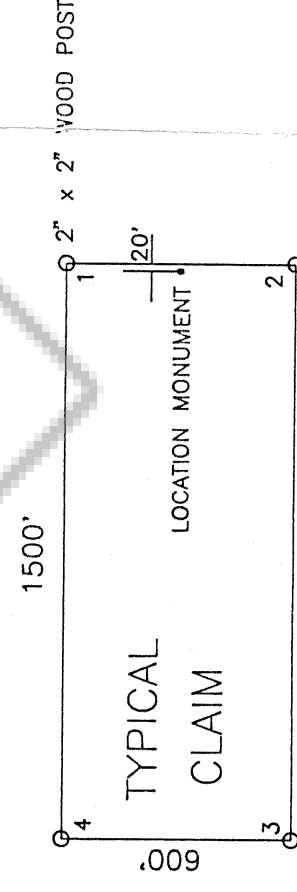
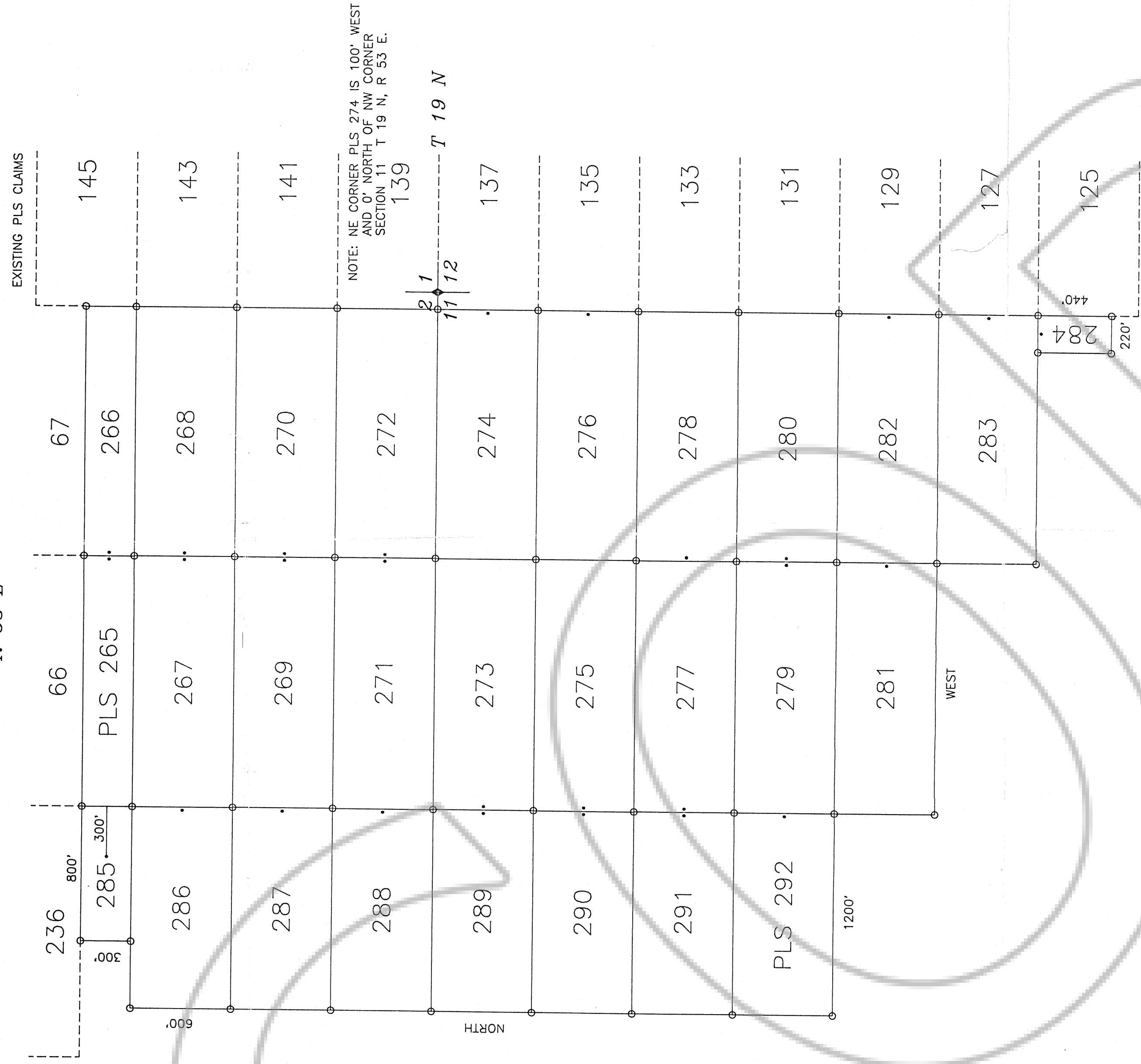
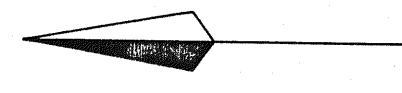


PLS CLAIMS

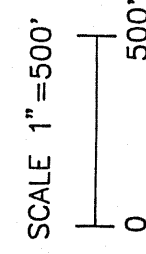
R 53 E



ALL CLAIMS ARE 1500' x 600' UNLESS OTHERWISE NOTED.



TRUE NORTH



PLACER DOME U.S.
240 S. ROCK BLVD. #1117
RENO, NEVADA 89502

LODE CLAIMS PLS 265-292
EUREKA COUNTY, NEVADA
SECTIONS: 2,11 T 19 N, R 53 E

FILED BY THE REGISTRAR OF PLACER CLAIMS
ON 7/17/93
RECORDS OF EUREKA COUNTY, NEVADA
FILE NO. 145975

LOCATED: PLS 265-272, 274, 276, 278-283, 285, 286 JULY 17, 1993
PLS 273, 275, 277, 284, 287-292 JULY 18, 1993

PREPARED BY: NORTH AMERICAN EXPLORATION, INC.
472 NORTH MAIN
KAYSVILLE, UTAH 84037