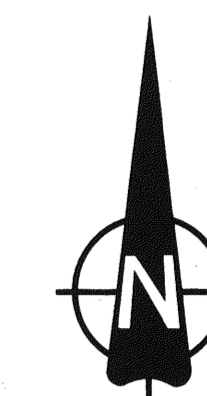


R. 52 E. R. 53 E.

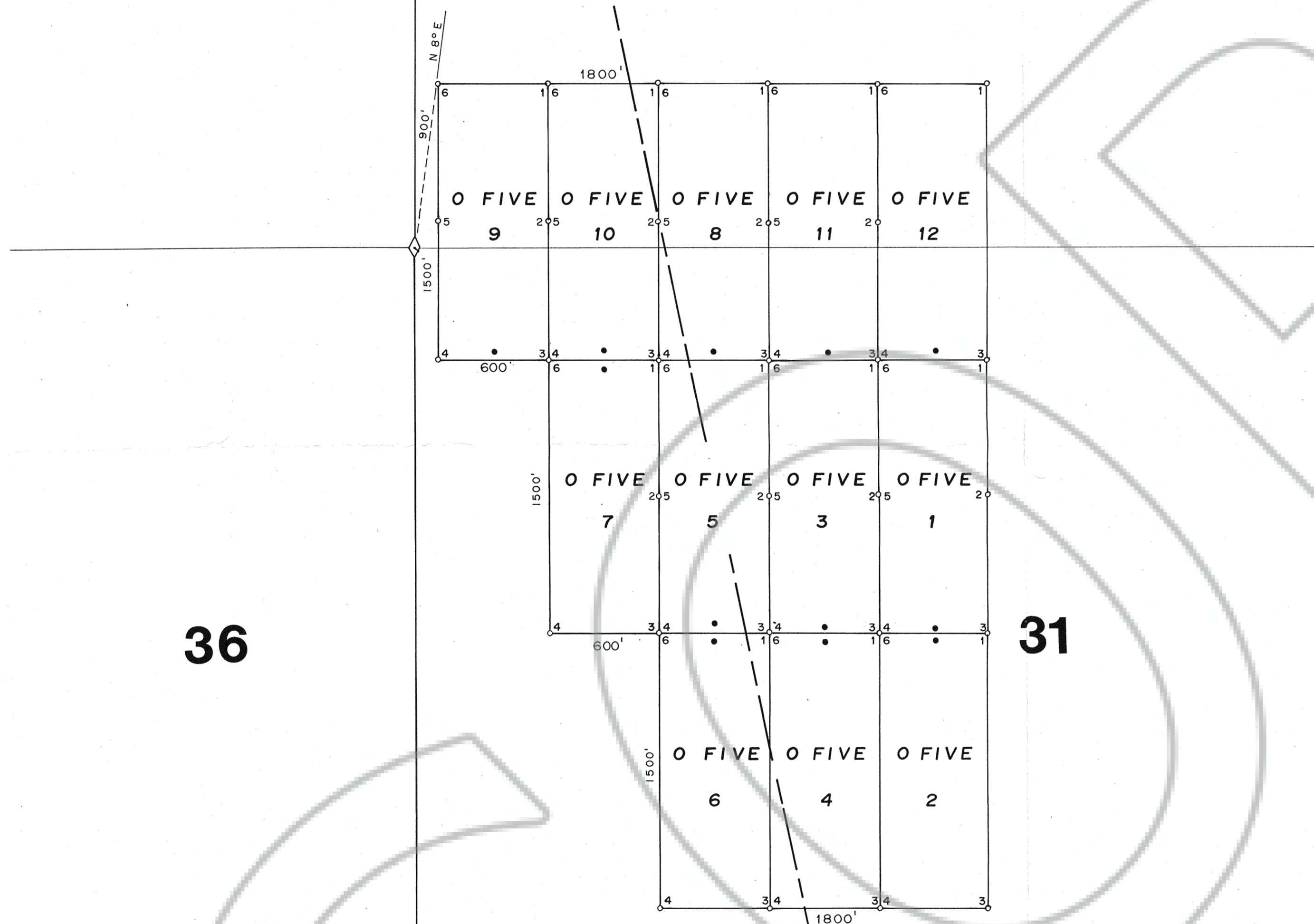
25

30

EUREKA CO.
ELKO CO.



500' 0 500' 1000'
SCALE 1" = 500'



36

31

T. 28 N.
T. 27 N.

T. 28 N.
T. 27 N.

1

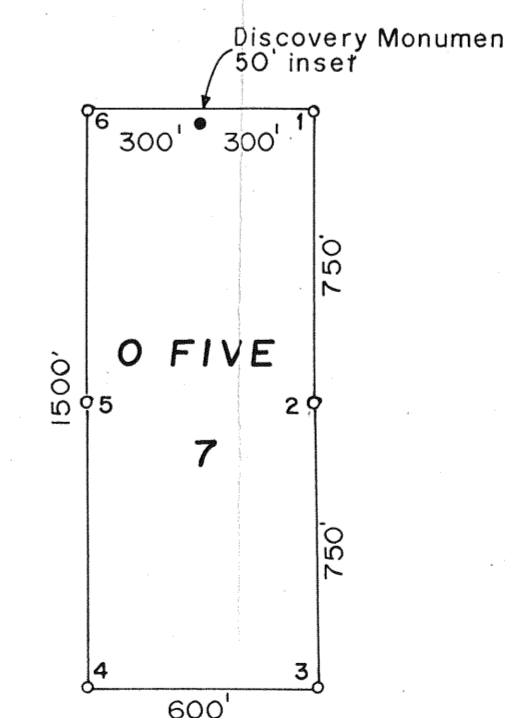
6

R. 52 E. R. 53 E.

EXPLANATION

1. All claims are 600' wide and 1500' long with the Discovery Monuments being 50' from the end lines.
2.
 - Corner and Side Center posts
 - Discovery Monuments
 - ◇ Found Section Corner
3. The location date was October 31, 1993. Monumentation was completed on Oct 31, 1993.
4. There are a total of 12 claims.

FILED BY THE REQUEST OF *New Dynasty Mines*
ON *Nov 2* 19 *93* AT *7* P.M. *1993*
RECORDS OF EUREKA COUNTY, NEVADA. M. N. REBELEK, Recorder
Fee \$ *147269* Fee \$ *235.00*



TYPICAL CLAIM 147269

MAP SHOWING
O FIVE LODE CLAIMS
NO. 1 - 12
SEC. 30, 31; T. 28 N., R. 53 E.
ELKO-EUREKA CO. NEVADA

NEW DYNASTY MINES (U.S.) INC.

8888 FINCH COURT BURNABY, B.C. V5A 4K6
SCALE: 1" = 500' BASE PLATE MAP FILE NO.