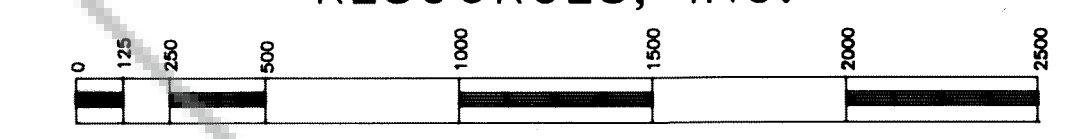


LODE CLAIM MAP
OF
KIM CHEE CLAIMS

4500 THRU 4507, 4595 THRU 4599
4603 THRU 4609, 4695 THRU 4697
4708, 4709, 4794 THRU 4797
4894 THRU 4896, 4887,
4986 THRU 4996,
5007 THRU 5011, 5085 THRU 5096
5106 THRU 5111, 5182 THRU 5195
5206 THRU 5213, 5282 THRU 5295
5382 THRU 5394
5482 THRU 5494

PORTIONS OF SECTIONS
1,2,3,4,10,11 T21N., R50E.,
25,26,33,34,35,36, T22N., R50E., M.D.B. & M.
UNKNOWN MINING DISTRICT
EUREKA COUNTY, NEVADA
LOCATED FOR COMINCO AMERICAN
RESOURCES, INC.



NOVEMBER 15, 1993
SCALE 1" = 500'
SHEET 1 OF 3

**PIEDMONT
ENGINEERING**

P.O. BOX 1
SILVER CITY
NEVADA, 89428
(702) 547-0641

LOCATED FOR:
COMINCO AMERICAN RESOURCES INC.
831 EAST GLENDALE AVENUE
SPARKS, NEVADA 89431

LOCATION DATES:

SEPT 11, 1993	4500 THRU 4507, 4603 THRU 4607
SEPT 12, 1993	4599 THRU 4595, 4697 THRU 4695, 4795 THRU 4797
SEPT 14, 1993	4794, 4894 THRU 4896, 4887, 4988 THRU 4996, 5088 THRU 5096 5188 THRU 5195, 5288 THRU 5295, 5388 THRU 5394, 5488 THRU 5494
SEPT 15, 1993	4986, 4987, 5087 THRU 5085, 5187 THRU 5182, 5287 THRU 5282
SEPT 16, 1993	5387 THRU 5382, 5482 THRU 5487
OCT 24, 1993	4608, 4609, 4708, 4709, 5007 THRU 5011
OCT 26, 1993	5106 THRU 5111, 5206 THRU 5213

THE BASIS OF BEARING OF THIS SURVEY IS THE STATE
PLANE BEARING OF S.45°12'45"W. BETWEEN U.S.C. & G.S.
STATIONS "KOBEL" AND "WILLOWS".

- INDICATES 2"x2"x4" WOODEN POST/ALUM. TAG
LOCATION MONUMENT, LOCATED 50' FROM THE
END LINES UNLESS OTHERWISE NOTED.
- INDICATES 2"x2"x4" WOODEN POST/ALUM. TAG
SECTION LINES ARE PROJECTED.
- DASHED CLAIM LINES INDICATE INVALID CLAIMS
OR PORTIONS OF CLAIMS.

FILED AT THE REQUEST OF *Cominco American*
on *Dec 1* 19 *93* at *37* mins. past *4p* M.
RECORDS OF EUREKA COUNTY, NEVADA M.N. REBALANCE
File No. *147837* Fee \$ *525*

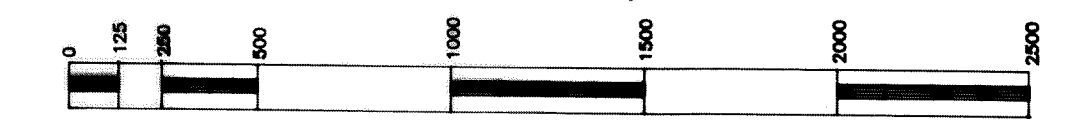




**LODE CLAIM MAP
OF
KIM CHEE CLAIMS**

4500 THRU 4507, 4595 THRU 4599
 4603 THRU 4609, 4695 THRU 4697
 4708, 4709, 4794 THRU 4797
 4894 THRU 4896, 4887,
 4986 THRU 4996,
 5007 THRU 5011, 5085 THRU 5096
 5106 THRU 5111, 5182 THRU 5195
 5206 THRU 5213, 5282 THRU 5295
 5382 THRU 5394
 5482 THRU 5494

PORTIONS OF SECTIONS
 1,2,3,4,10,11 T21N., R50E.,
 25,26,33,34,35,36, T22N., R50E., M.D.B. & M.
 UNKNOWN MINING DISTRICT
 EUREKA COUNTY, NEVADA
 LOCATED FOR COMINCO AMERICAN
 RESOURCES, INC.



NOVEMBER 15, 1993
 SCALE 1" = 500'
 SHEET 2 OF 3

**PIEDMONT
ENGINEERING**

P.O. BOX 1
 SILVER CITY
 NEVADA, 89425
 (702) 847-0841

- INDICATES 2"x2"x4" WOODEN POST/ALUM. TAG LOCATION MONUMENT, LOCATED 50' FROM THE END LINES UNLESS OTHERWISE NOTED.
- INDICATES 2"x2"x4" WOODEN POST/ALUM. TAG
- SECTION LINES ARE PROJECTED.
- DASHED CLAIM LINES INDICATE INVALID CLAIMS OR PORTIONS OF CLAIMS.

147837

FILED AT THE REQUEST OF *Cominco American*
 19 93
 RECORDS OF EUREKA COUNTY, NEVADA
 147837



- INDICATES 2"x2"x4" WOODEN POST/ALUM. TAG LOCATION MONUMENT. LOCATED 50' FROM THE END LINES UNLESS OTHERWISE NOTED.
- INDICATES 2"x2"x4" WOODEN POST/ALUM. TAG
- SECTION LINES ARE PROJECTED.
- DASHED CLAIM LINES INDICATE INVALID CLAIMS OR PORTIONS OF CLAIMS.
- △ INDICATES SURVEY CONTROL POINT.

LODE CLAIM MAP
OF
KIM CHEE CLAIMS

4500 THRU 4507, 4595 THRU 4596
4603 THRU 4609, 4695 THRU 4697
4708, 4709, 4794 THRU 4797
4894 THRU 4896, 4887,
4986 THRU 4996,
5007 THRU 5011, 5085 THRU 5096
5106 THRU 5111, 5182 THRU 5195
5206 THRU 5213, 5282 THRU 5295
5382 THRU 5394
5482 THRU 5494

PORTIONS OF SECTIONS
1,2,3,4,10,11 T21N., R50E.,
25,26,33,34,35,36, T22N., R50E., M.D.B.& M.
UNKNOWN MINING DISTRICT
EUREKA COUNTY, NEVADA
LOCATED FOR COMINCO AMERICAN
RESOURCES, INC.



NOVEMBER 15, 1993

SCALE 1" = 500'

SHEET 3 OF 3

**PIEDMONT
ENGINEERING**

P.O. BOX 1
SILVER CITY
NEVADA 89428
(702) 847-0841



CLAIMS UNRECORDED AS OF THIS DATE

HRV 1197

HRV 1198



FILED AT THE REQUEST OF *Cominco American*
NOV 15 1993 at 3:37 mins. east
RECORDS SECTION, EUREKA COUNTY, NEVADA - M.N. REBEAULT
File No. 147837 Fee \$ 315

147837