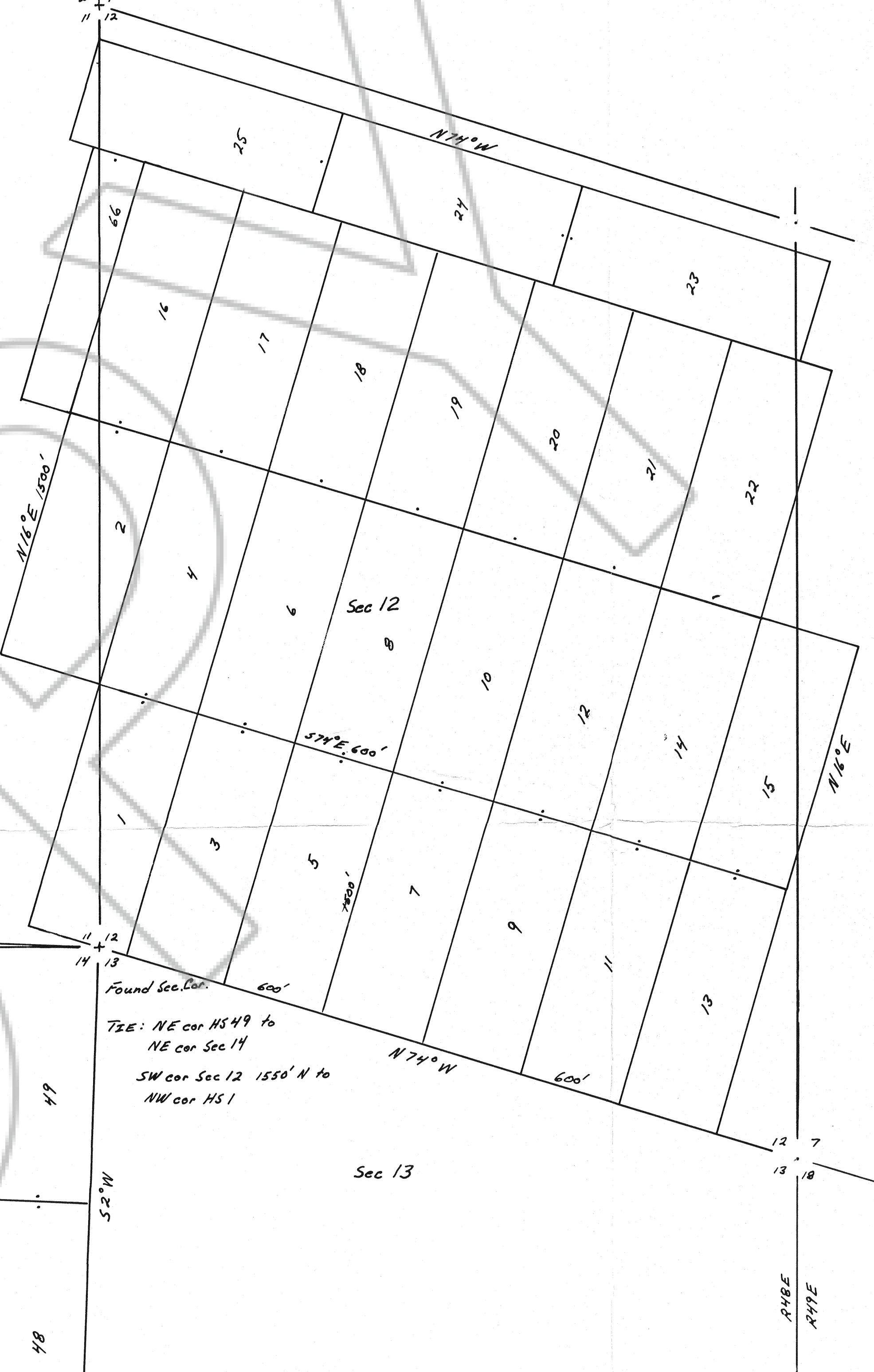
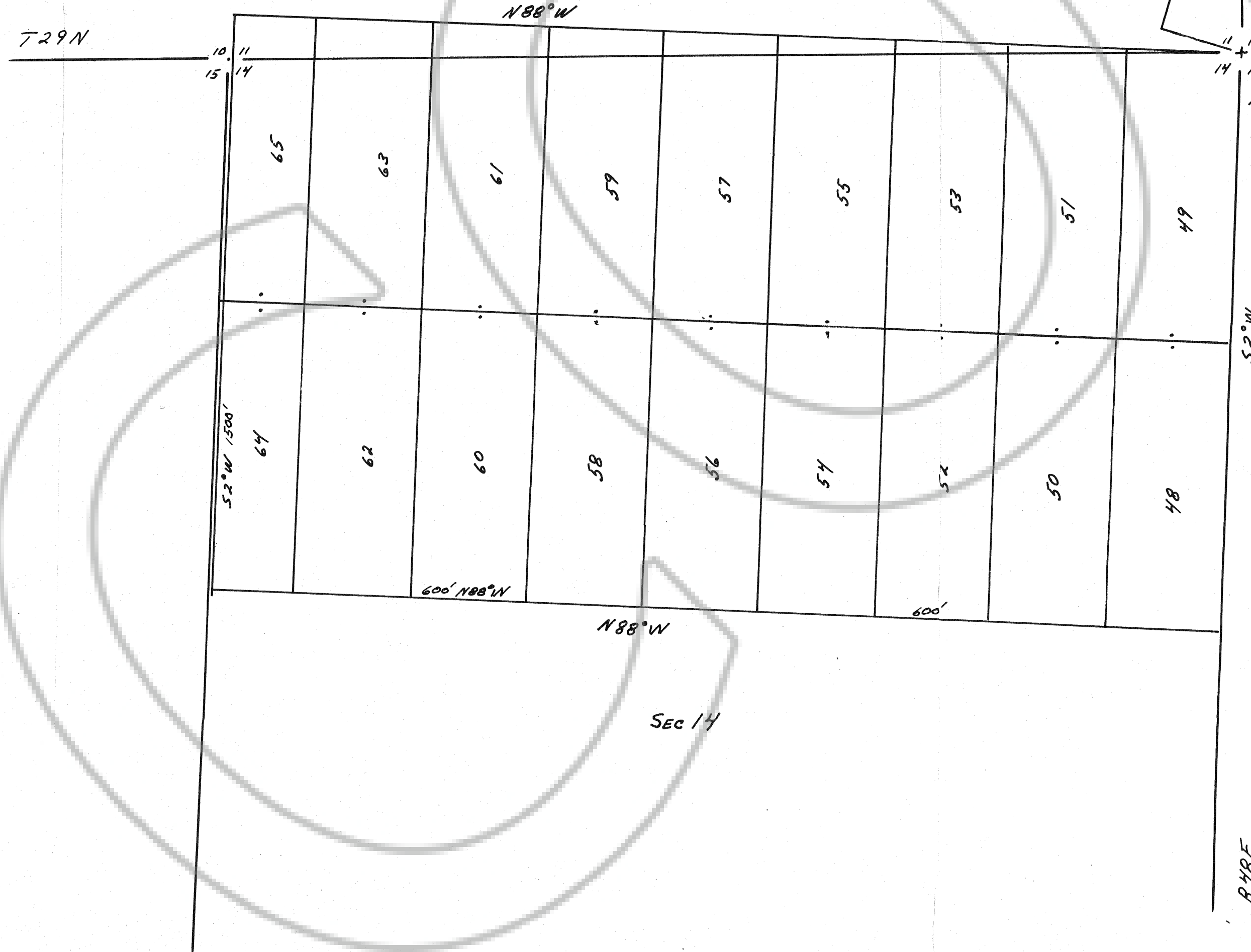


Typical claim  
All corners are 2x2 wood



Found Sec. Corn.  
T2E: NE cor HS 49 to  
NE cor Sec 14  
SW cor Sec 12 1550' N to  
NW cor HS 1

HS Group Lode Claims #1-#66  
Sec 12, 14 T29N, R48E.  
Located by: Beaver Creek Gold Mining Co.  
469 Idaho  
Elko, NV 89801  
Located in October 1993  
Eureka County, NV

149622

Scale 1" = 500'

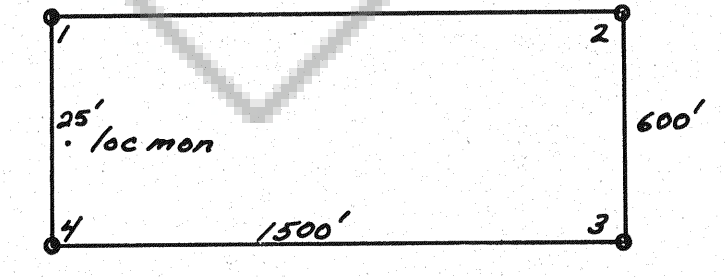
FILED AT THE REQUEST OF Elmer  
on Dec 6 1992, at 12 mins, past 9A M.  
RECORDS OF EUREKA COUNTY, NEVADA M. N. REBALATI Recorder  
File No. 149622 Fee \$ 60



T30N 36 32  
T29N 1 6

Sec 32

46	47
44	45
42	43
40	41
38	39
36	37
34	35
32	33
30	31
28	29
1500'E	1500'E
26	27



Typical claim  
All corners are 2x2" Wood

Scale 1" = 500'

Found Sec. Cor.  
Tie: SW Cor HS 26 to SW cor Sec 6

HS claims #1-25

R49E  
R49E

HS Group Lode Claims  
 Sec 6, T29N, R49E  
 Eureka County  
 HS lode claims # 26-47  
 Located in October, 1993  
 Located by: Beaver Creek Gold Mining Co.  
 469 Idaho  
 Eureka, NV 89801

Sheet 2 of 2

149622

149622  
149622