

TIE: NW CORNER OF SC 47 IS 652' EAST  
OF SW CORNER OF SECTION 19, T20N, R53E

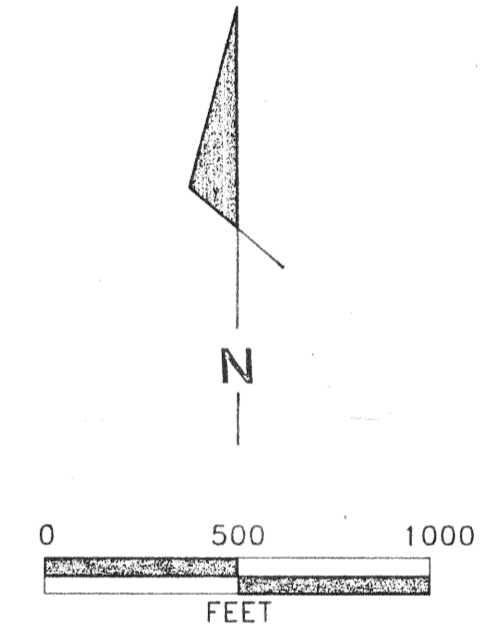
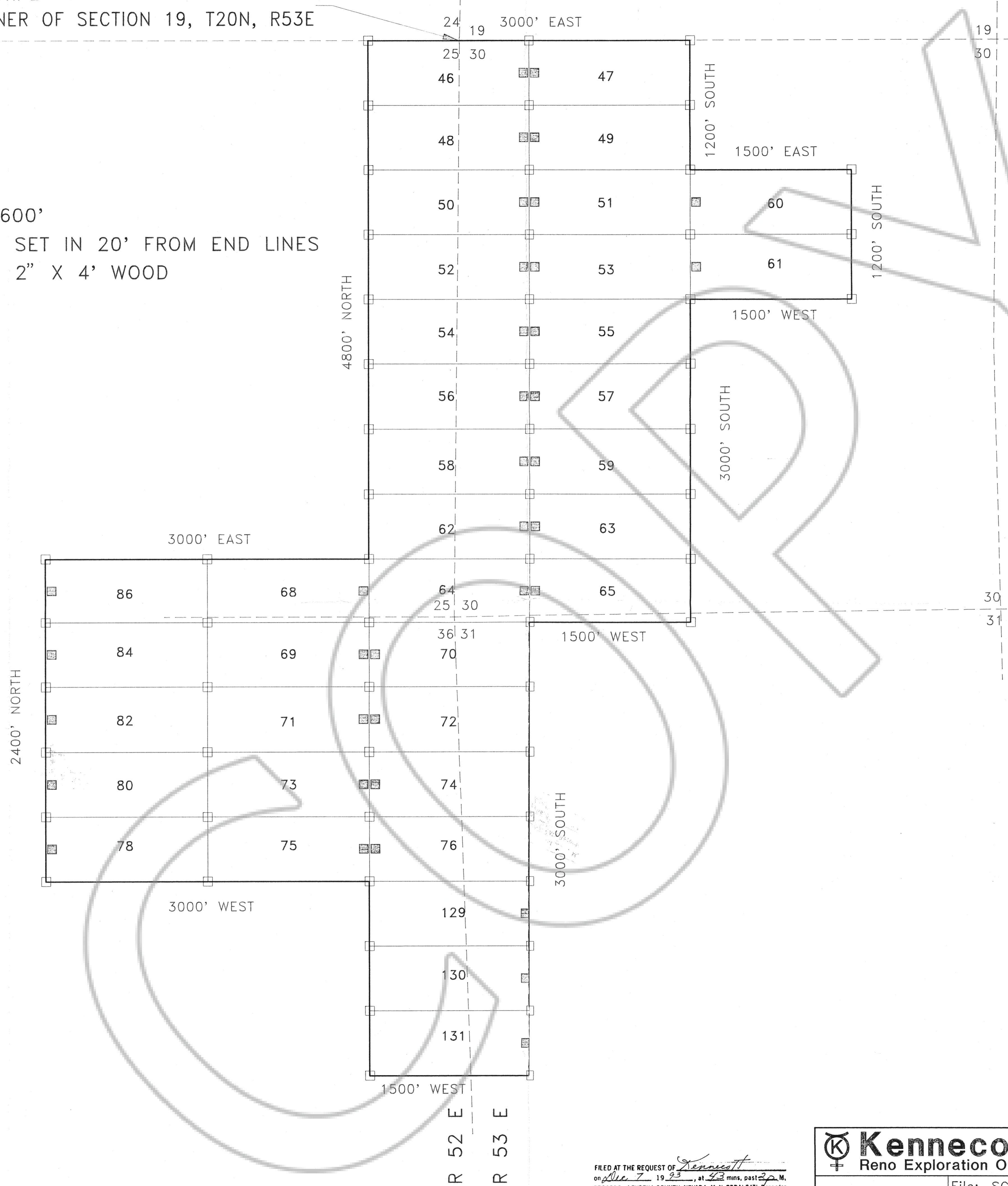
NOTES

ALL CLAIMS ARE 1500' X 600'  
LOCATION MONUMENTS ARE SET IN 20' FROM END LINES  
ALL MONUMENTS ARE 2" X 2" X 4' WOOD

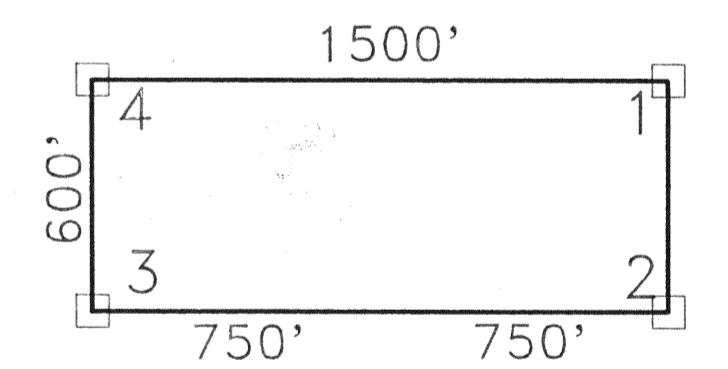
LOCATION DATES

All Claims Located September 8, 1993

T 20 N



TYPICAL CLAIM



LOCATOR:  
KENNECOTT EXPLORATION  
961 MATLEY LANE, SUITE 120  
RENO, NEVADA 89502

R 52 E  
R 53 E  
149709

FILED AT THE REQUEST OF *Kennecott*  
on *Dec 7* 19*93*, at *2:23* mins, past *2:00* P.M.  
RECORDS OF EUREKA COUNTY, NEVADA M. N. REBALEATI, Recorder  
File # *149709* Fee \$ *535.00*

**Kennecott**  
Reno Exploration Office



File: SC1.DWG  
Plt: 1=500

Data By: CN  
Drafted By: RL  
Date: 12-6-93  
Revised:

**SC LODE CLAIMS**  
**SC 46-65, 68-76, 80, 82, 84, 86**  
**129-131**  
**EUREKA COUNTY, NEVADA**