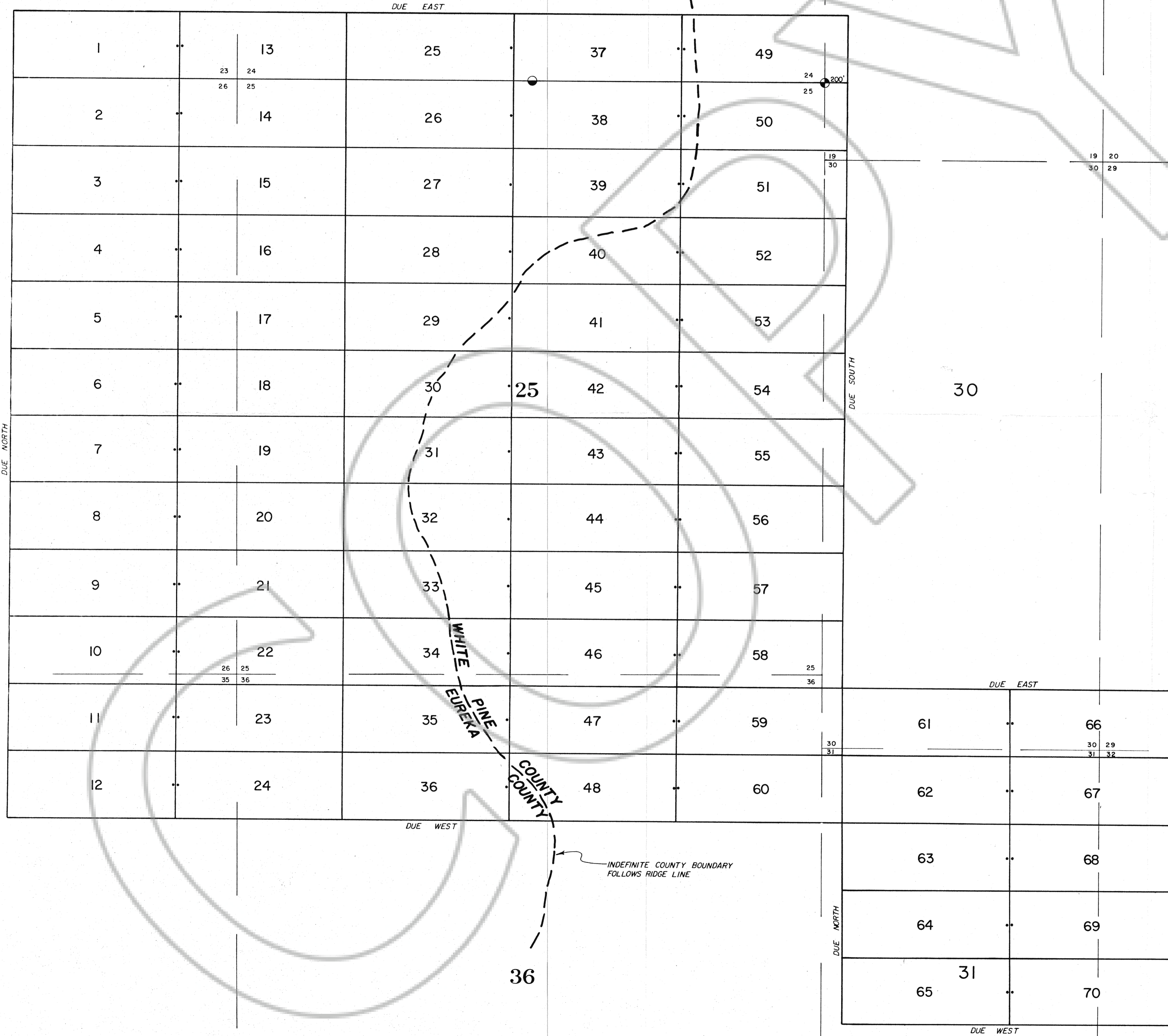


23

24

19

R 54 E R 55 E

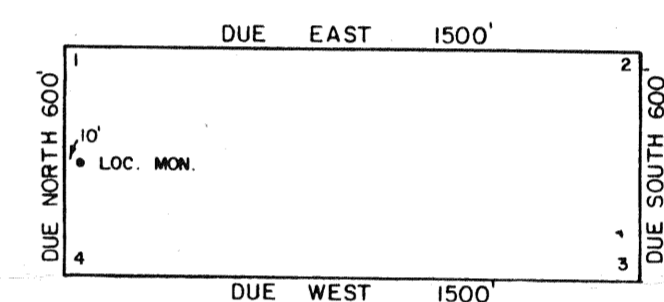


T 25 N

26

35

TYPICAL CLAIM & CORNER NUMBERS



ALL CLAIMS ARE 1500' x 600'.
 ALL LOCATION MONUMENTS ARE 10' IN FROM THE END CENTER.
 ALL CLAIM CORNERS & LOCATION MONUMENTS ARE 2" x 2" x 4" WOOD POSTS.
 ● DENOTES A FOUND SECTION CORNER (BRASS CAP)
 ○ DENOTES A FOUND 1/4 CORNER (BRASS CAP)

LOCATION DATES

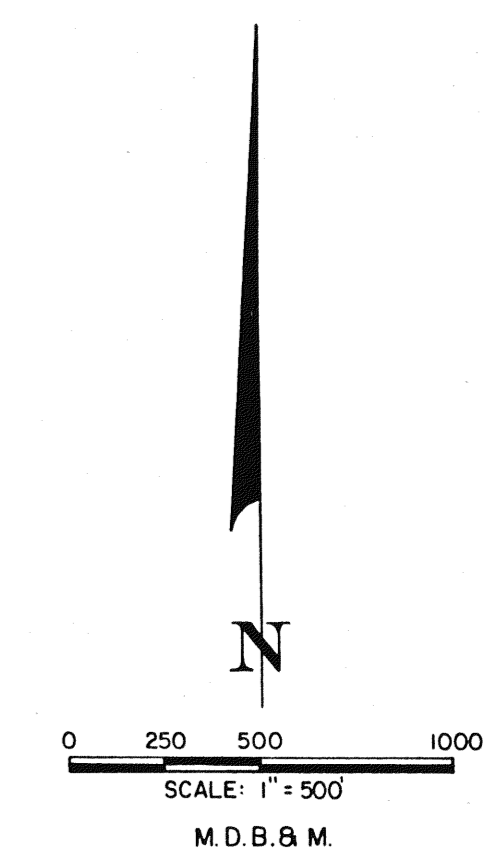
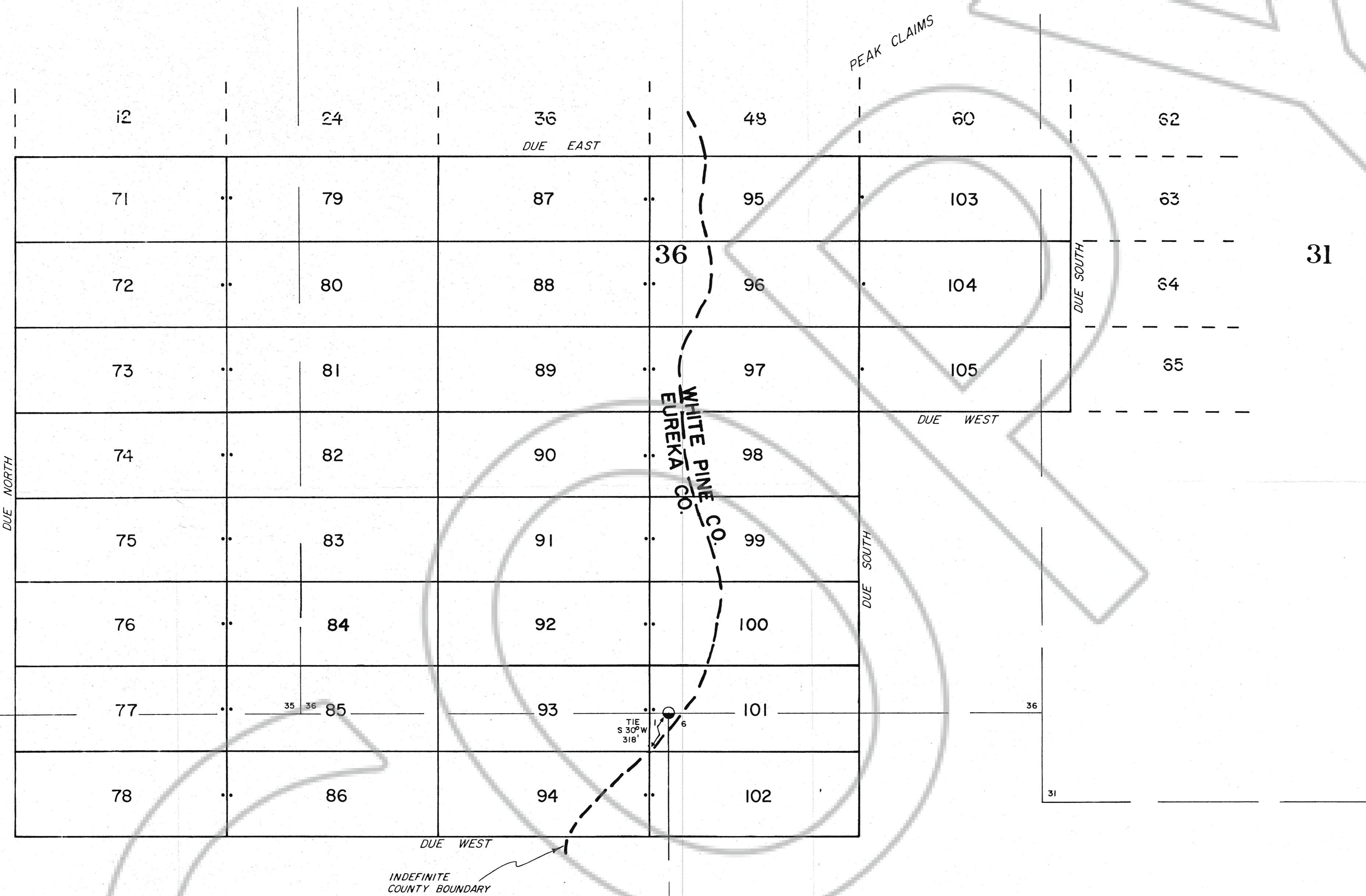
DEC. 3, 1993 ----- 37-43, 49-55
 DEC. 4, 1993 ----- 1-24
 DEC. 5, 1993 ----- 44-48, 56-70
 DEC. 6, 1993 ----- 25-36

FILED AT THE REQUEST OF Placer Dome
 on Jan 4th 1994 at 50 mins, east 11 A.M.
 RECORDS OF EUREKA COUNTY, NEVADA M. N. REBELETTI, Register
 File No. 150088 Fee \$ 1675.00

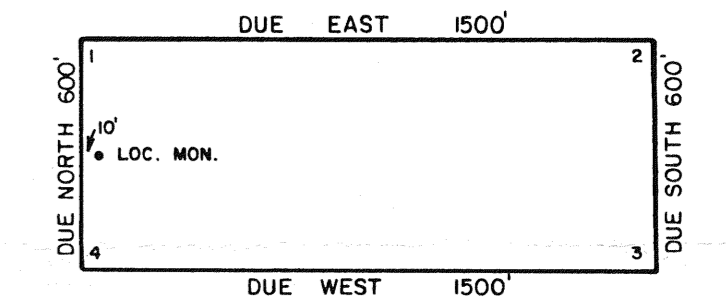
**PEAK LODGE MINING CLAIMS
 NO'S 1-70**
 SECS. 23-26, 35 & 36, T 25 N, R 54 E, M.D.B.&M.
 SECS. 19, & 29-32, T 25 N, R 55 E, M.D.B.&M.
 EUREKA & WHITE PINE COUNTIES, NEVADA

OWNER:
 PLACER DOME U.S. INC.
 240 SOUTH ROCK BLVD. SUITE 117
 RENO, NEVADA 89502

35



TYPICAL CLAIM & CORNER NUMBERS



ALL CLAIMS ARE 1500' x 600'.
 ALL LOCATION MONUMENTS ARE 10' IN FROM THE END CENTER.
 ALL CLAIM CORNERS & LOCATION MONUMENTS ARE 2" x 2" x 4" WOOD POSTS.
 ● DENOTES A FOUND 1/4 CORNER (BRASS CAP)

LOCATION DATES

DEC. 21, 1993 - - - - - 87-102
 DEC. 22, 1993 - - - - - 71-86
 DEC. 23, 1993 - - - - - 103-105

T 25 N
 T 24 N

R 54 E R 55 E

FILED AT THE REQUEST OF Placer Dome
 on Jan 24 1993, at 10:50 mins. past 11 AM
 RECORDS OF EUREKA COUNTY, NEVADA M. N. REBALEATI, Recorder
 File No. 150088 Fee \$ 200

**PEAK LODGE MINING CLAIMS
 NOS 71 - 105**
 SEC. 1 T 24 N, R 54 E, M.D.B.&M.
 SECS. 35 & 36, T 25 N, R 54 E, M.D.B.&M.
 SEC. 6, T 24 N, R 55 E, M.D.B.&M.
 EUREKA & WHITE PINE COUNTIES, NEVADA

OWNER:
 PLACER DOME U.S. INC.
 240 SOUTH ROCK BLVD. SUITE 117
 RENO, NEVADA 89502

150088