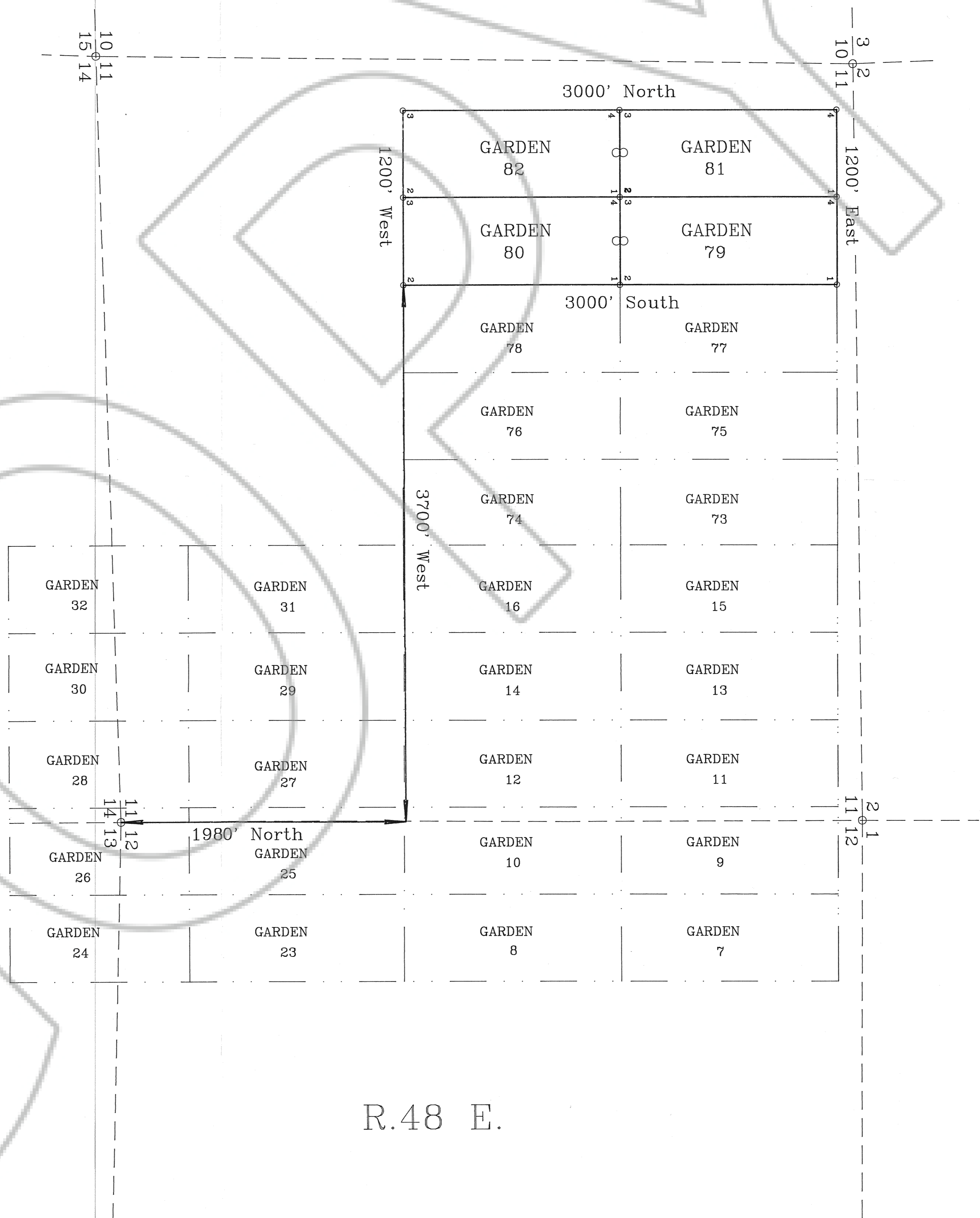


T. 25 N.

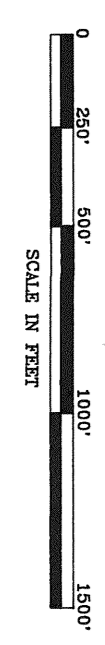
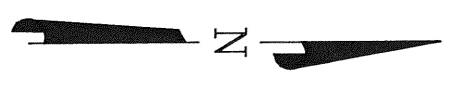


R.48 E.

EXPLANATION

1. The GARDEN Nos. 79-82 were located by Randy Stoeberl as agent for Lac Minerals (USA), Inc., P.O. Box 21390, Reno, Nevada, 89515.
2. The claims are located in T.25N., R.48E., Section 11, M.D.B. & M., Eureka County, Nevada.
3. All Claims are 600' x 1500' with wooden posts at least 2"x2"x4' with a scribed metal tag.
4. ○ -Discovery Monument, wooden post marked with Aluminum tag.
All discovery monuments are 20' from the claim end lines.
5. GARDEN Nos. 79-82 were located on December 14, 1993.
6. Survey performed with Brunton and Tape.
7. Dotted claims indicate existing claims.
8. Section The Corner 3 of GARDEN No. 80 lies 1980' North and 3700' West of the common corner of Sections 11, 12, 13, and 14, T.25 N., R.48 E., M.D.B. & M.

FILED AT THE REQUEST OF *Lac Minerals*
Don W. 19 82 Clerk, Eureka County, Nevada
 RECORDS OF EUREKA COUNTY, NEVADA Fee \$ 40
 FILE NO. **150093**



LAC MINERALS (U.S.A.) INC.
 LOCATION MAP
 -- OF THE --
 GARDEN Nos. 79-82
 T.25N., R.48E., M.D.B. & M.
 EUREKA COUNTY - NEVADA

150093