

R 50 E

R 51 E

11 12  
14 13

12 7  
13 18

3645' @ S 67° E

14 13  
23 24

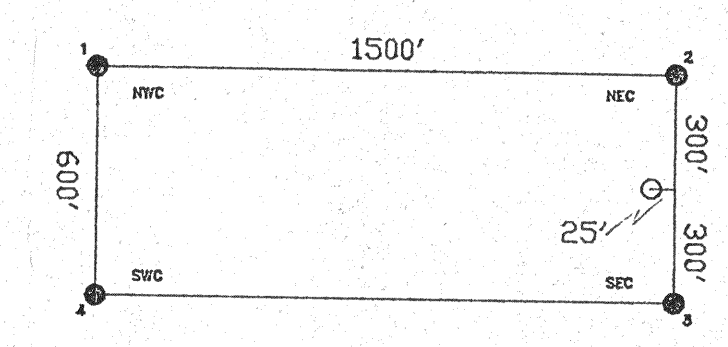
13 18  
24 19

T  
24  
N

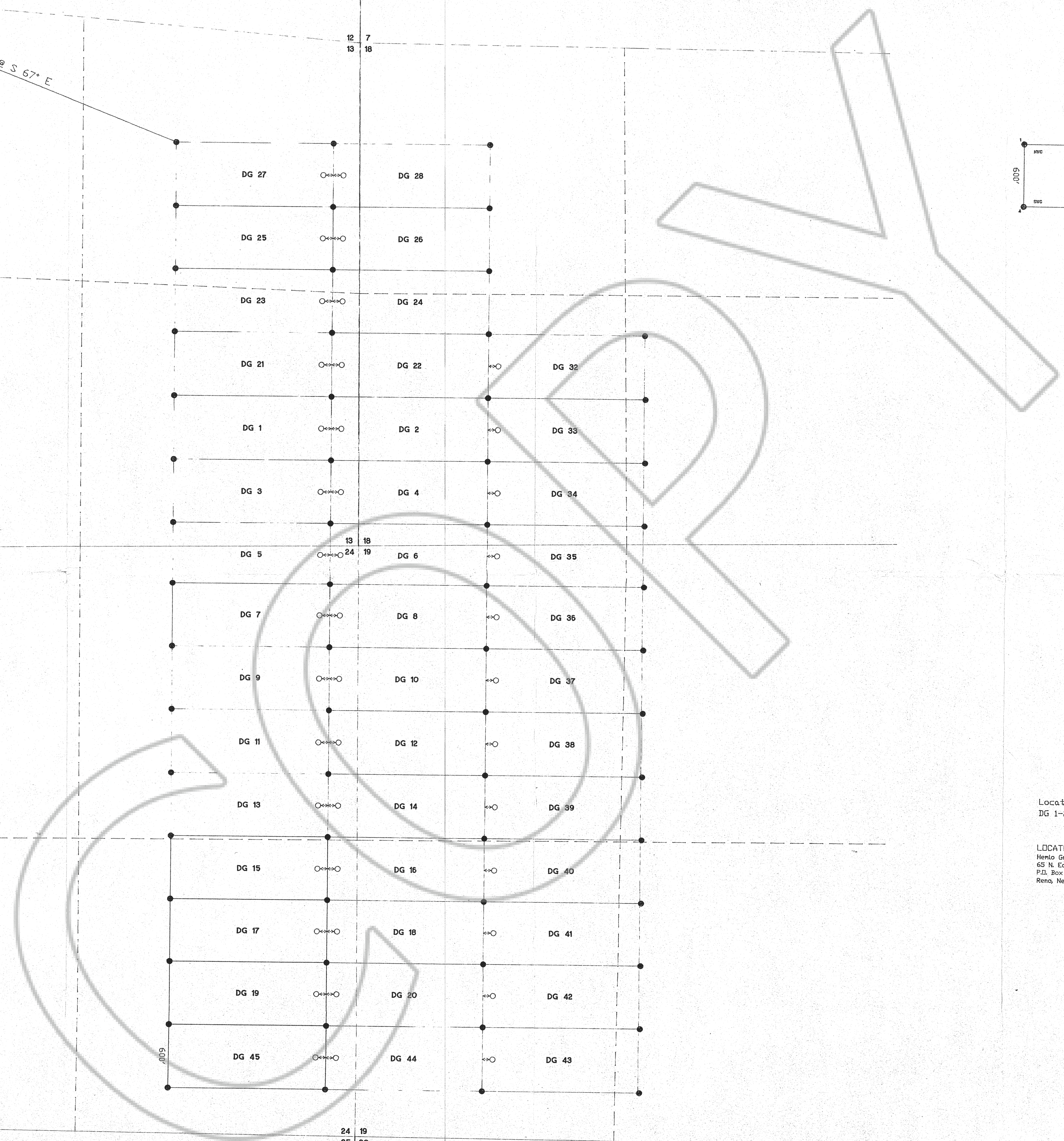
23 24  
26 25

24 19  
25 30

TYPICAL CLAIM

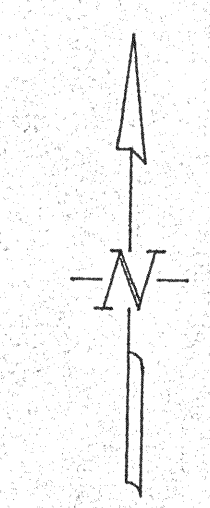


All claim corners are 2" x 2" x 4" wooden posts clearly marked with scribed aluminum tags.

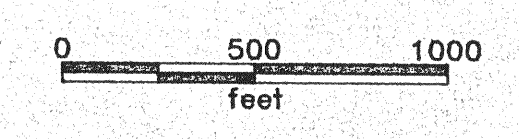


Location Date:  
DG 1-28, 32-45 Nov 11, 1993

LOCATED BY:  
Herio Gold Mines (USA) Inc.  
65 N. Edison Way, Ste. #4  
P.O. Box 7176  
Reno, Nevada 89510



FILED AT THE REQUEST OF *Noranda Exploration*  
on Jan 24<sup>th</sup> 19 94, at 5 mins, past 12 M,  
RECORDS OF EUREKA COUNTY, NEVADA M. N. REBALEATI, Recorder.  
File No. **150199** Fee \$ 6.30



DG CLAIM GROUP  
T24N R50E Sec. 13, 24 & T24N R51E Sec. 18, 19.  
Esmeralda County Nevada  
EUREKA

File Name: GB\_CLM.dwg

150199