

OWNER'S CERTIFICATE
 KNOWN ALL MEN BY THESE PRESENTS EUREKA COUNTY SCHOOL DISTRICT THE UNDERSIGNED, BEING THE OWNER OF A PORTION OF THE SE 1/4 OF SECTION 14, T19N, R33E, M.D.M., DO HEREBY OFFER WITHOUT RESERVATION FOR STREET AND PUBLIC UTILITY PURPOSES, ALL THE AREAS DELINEATED FOR SUCH PURPOSES ON THIS MAP IN WITNESS WHEREOF, WE HAVE HERETO SET OUR HANDS THE 28 DAY OF January, 1994.
 SUPERINTENDENT
 DAVID W. LANNIGAN

SURVEYOR'S CERTIFICATE:
 1. MARVIN HAMRICK, A PROFESSIONAL LAND SURVEYOR IN THE STATE OF NEVADA, CERTIFY THAT:
 1. THIS IS A TRUE AND ACCURATE REPRESENTATION OF THE LANDS SURVEYED UNDER MY SUPERVISION AT THE INSTANCE OF DAVID W. LANNIGAN.
 2. THE LANDS SURVEYED LIE WITHIN SECTION 14, T19N, R33E, M.D.M., AND THE SURVEY WAS COMPLETED ON NOVEMBER 18, 1993.
 3. THIS PLAT COMPLEES WITH THE APPLICABLE STATE STATUTES AND ANY LOCAL ORDINANCES.
 4. THE MONUMENTS ARE OF THE CHARACTER SHOWN AND OCCUPY THE POSITIONS INDICATED.
 MARVIN HAMRICK
 PROFESSIONAL LAND SURVEYOR
 STATE OF NEVADA
 NO. 331
 1-13-94
 DATE

COUNTY TREASURER'S CERTIFICATE
 THIS IS TO CERTIFY THAT PARCEL NO. 01-021-01 AND THROUGH June 30, 1994 HAS NO DELINQUENCIES ARE THAT TAXES ARE PAID THROUGH June 30, 1994.
 DATE 1-13-94
 EUREKA COUNTY TREASURER
John S. Sipple

PLANNING COMMISSION APPROVAL
 AT A REGULAR MEETING OF THE EUREKA COUNTY REGIONAL PLANNING COMMISSION, STATE OF NEVADA, HELD ON THE 13 DAY OF January, 1994, THIS MAP WAS DULY APPROVED.
Marlene Shale
 CHAIRPERSON - Pro-Tem

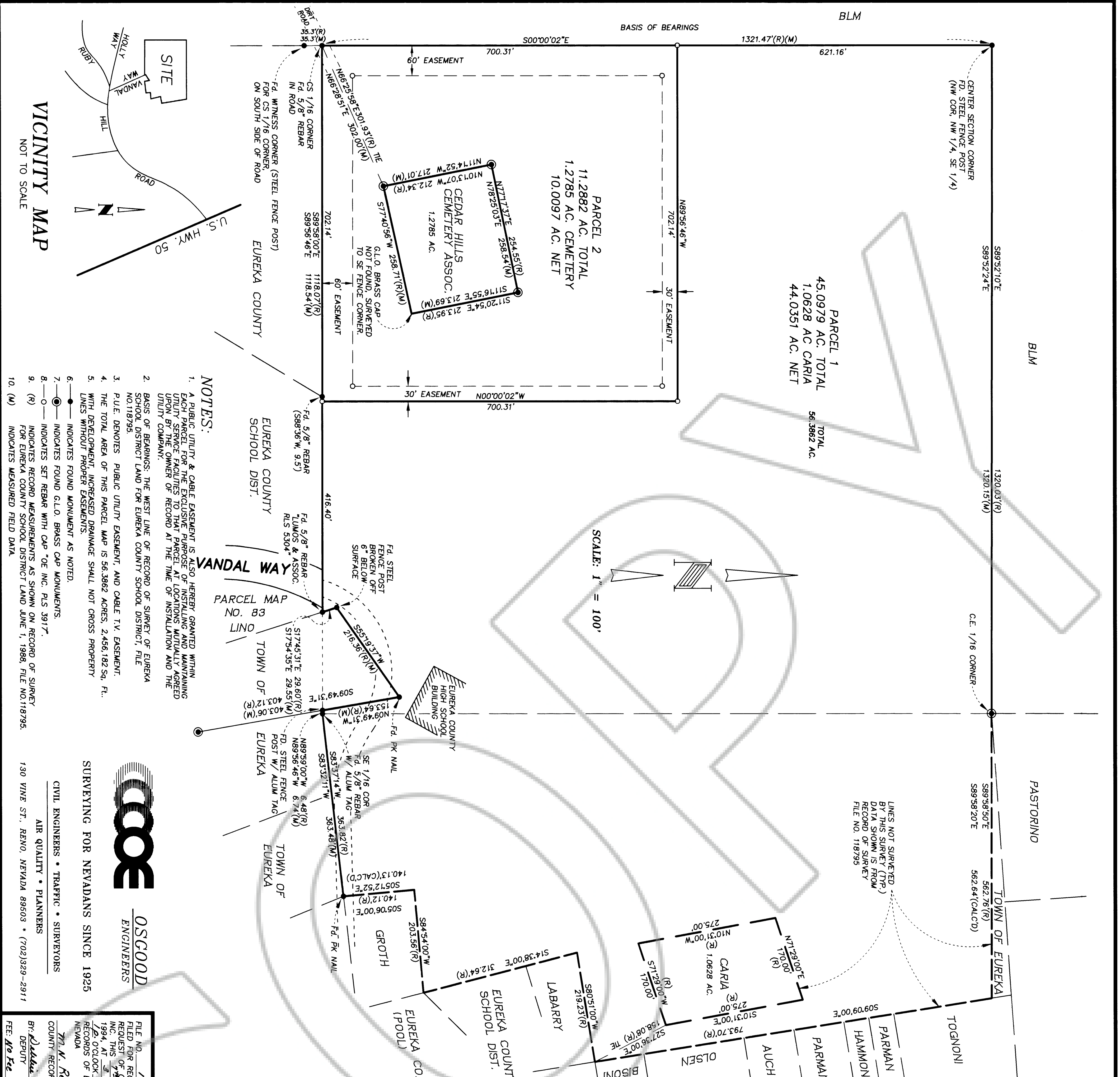
COUNTY COMMISSIONERS APPROVAL
 AT A REGULAR MEETING OF THE EUREKA COUNTY COMMISSIONERS HELD ON January 13, 1994, THIS MAP CONSISTING OF ONE SHEET WAS PRESENTED AS A PROPOSED PARCEL MAP (LEBOL DESQ).
 EUREKA COUNTY HEREBY ACCEPTS THE OFFER OF DEDICATION FOR PUBLIC PURPOSES OF THE STREET AND ROAD RIGHTS OF WAY AND PUBLIC UTILITY RIGHTS OF WAY SHOWN ON THIS MAP. STREET AND ROAD RIGHTS OF WAY ARE NOT ACCEPTED BY THE COUNTY UNTIL THEY ARE IMPROVED TO COUNTY STANDARDS, APPROVED BY THE EUREKA COUNTY DEPARTMENT OF PUBLIC WORKS, AND AND EXPRESSLY ACCEPTED BY RESOLUTION OF THE BOARD OF EUREKA COUNTY COMMISSIONERS.
John S. Sipple
 CHAIRMAN, EUREKA COUNTY COMMISSIONERS
 EUREKA COUNTY CLERK
Paul Harp

ACCEPTANCE OF THIS PARCEL MAP BY EUREKA COUNTY DOES NOT CONSTITUTE A GUARANTEE THAT EACH OR ANY LOT SHOWN THEREON CONTAINS A LAWFUL BUILDING SITE.
 FURTHER REPARCELING OF ANY PARCEL CREATED BY THIS MAP MAY BE SUBJECT TO THE PROVISIONS OF NRS 278.462.3 PERMITTING IMPOSITION OF REASONABLE PAYMENT STANDARDS, BUT NOT GREATER IMPROVEMENTS THAN REQUIRED FOR SUBDIVISIONS.
UTILITY COMPANIES' CERTIFICATE
 THIS FINAL MAP AND THE EASEMENTS SHOWN ON THIS PLAT HAVE BEEN CHECKED AND APPROVED BY THE UNDERSIGNED.
 NEVADA BELL
 DATE _____
 MT. WHEELER POWER INC.
 DATE _____

OSGOOD ENGINEERS
 SURVEYING FOR NEVADANS SINCE 1925
 CIVIL ENGINEERS • TRAFFIC • SURVEYORS
 AIR QUALITY • PLANNERS
 130 VINE ST., Reno, NEVADA 89503 • (702)329-2911

FILE NO. 150451
 FILED FOR RECORD AT THE REQUEST OF OSGOOD ENGINEERS INC. THIS 7th DAY OF January 1994, AT 9 MINUTES PAST 10 O'CLOCK A.M. OFFICIAL RECORDS OF EUREKA COUNTY, NEVADA
Tim M. Reboldus
 COUNTY RECORDER
 BY: John S. Sipple
 DEPUTY

PARCEL MAP
 FOR
EUREKA CO. SCHOOL DISTRICT
 SITUATE IN SECTION 14, T19N, R33E, M.D.M.
 SHEET 1 OF 1



- NOTES:**
1. A PUBLIC UTILITY & CABLE EASEMENT IS ALSO HEREBY GRANTED WITHIN A PARCEL FOR THE PURPOSES OF LAYING AND MAINTAINING UTILITY SERVICE FACILITIES TO THAT PARCEL AT LOCATIONS MUTUALLY AGREED UPON BY THE OWNER OF RECORD AT THE TIME OF INSTALLATION AND THE UTILITY COMPANY.
 2. BASIS OF BEARINGS: THE WEST LINE OF RECORD OF SURVEY OF EUREKA SCHOOL DISTRICT LAND FOR EUREKA COUNTY SCHOOL DISTRICT, FILE NO. 118795.
 3. P.U.E. DENOTES PUBLIC UTILITY EASEMENT AND CABLE T.V. EASEMENT.
 4. THE TOTAL AREA OF THIS PARCEL MAP IS 56.3862 ACRES, 2.456,182 Sq. Ft.
 5. WITH DEVELOPMENT, INCREASED DRAINAGE SHALL NOT CROSS PROPERTY LINES WITHOUT PROPER EASEMENTS.
 6. ● INDICATES FOUND MONUMENT AS NOTED.
 7. ○ INDICATES FOUND G.L.O. BRASS CAP MONUMENTS.
 8. ○ INDICATES SET REBAR WITH CAP "OE INC. PLS 3917".
 9. (R) INDICATES RECORD MEASUREMENTS AS SHOWN ON RECORD OF SURVEY FOR EUREKA COUNTY SCHOOL DISTRICT LAND LIME 1, 1988, FILE NO. 118795.
 10. (M) INDICATES MEASURED FIELD DATA.