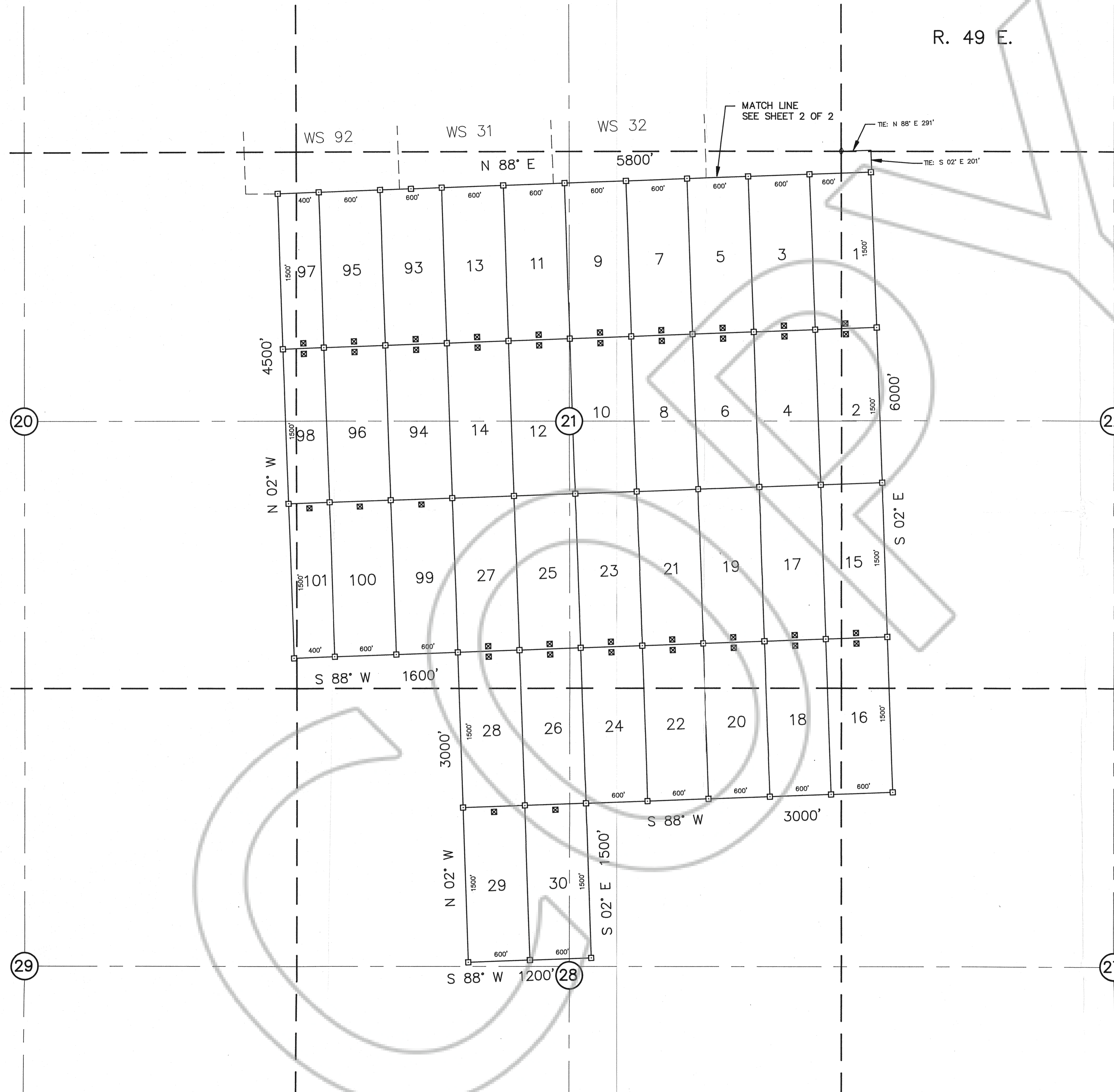


R. 49 E.



NOTES

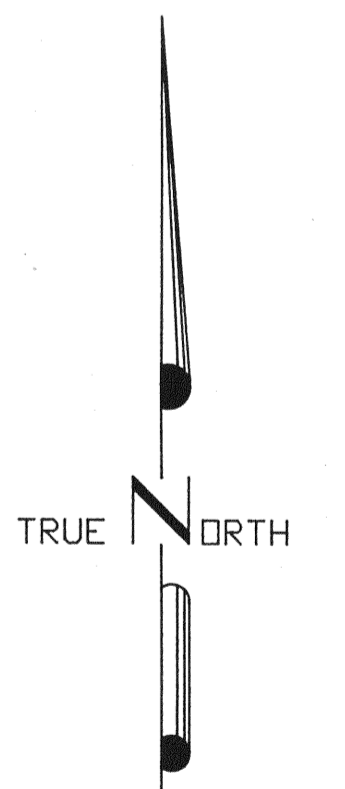
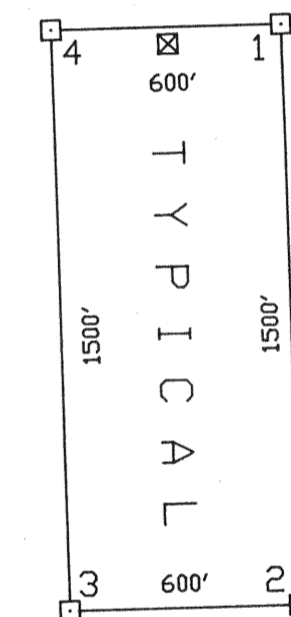
ALL CLAIMS ARE 1500' X 600' UNLESS OTHERWISE SHOWN
 LOCATION MONUMENTS ARE 10' FROM END LINE OF CLAIM
 UNLESS OTHERWISE SHOWN.
 SECTION LINES ARE PROJECTED.

LEGEND

- ☒ - 2" x 2" x 4' WOOD POST LOCATION MONUMENT
- - 2" x 2" x 4' WOOD POST MONUMENT
- ◇ - TIE: SECTION CORNER

LOCATION DATES:

DEC. 18, 1993 1 - 28
 DEC. 19, 1993 29 - 30
 DEC. 20, 1993 93 - 101



SCALE 1" = 500'

SHEET 1 OF 2

MAP OF THE
WS
LODE MINING CLAIMS
 Sections 20, 21, 22, 27, and 28,
 T. 22 N., R. 49 E., M.D.M.
 Eureka County, Nevada

Locator
ATLAS PRECIOUS METALS INC.
 370 Seventeenth Street, Suite 3150
 Denver, Colorado 80202-5631
 JANUARY 17, 1994

FILED AT THE REQUEST OF *Atlas Precious Metals*
 on Feb 23 1994 at 30 mins, past 12 P.M.
 RECORDS OF EUREKA COUNTY, NEVADA M. N. REBA, ATT. Recorder
 Fee \$ 285.2
 File No. **150909**

DCA\CLAIMS\ATLAS\93C058A

150909

T. 22 N.

20

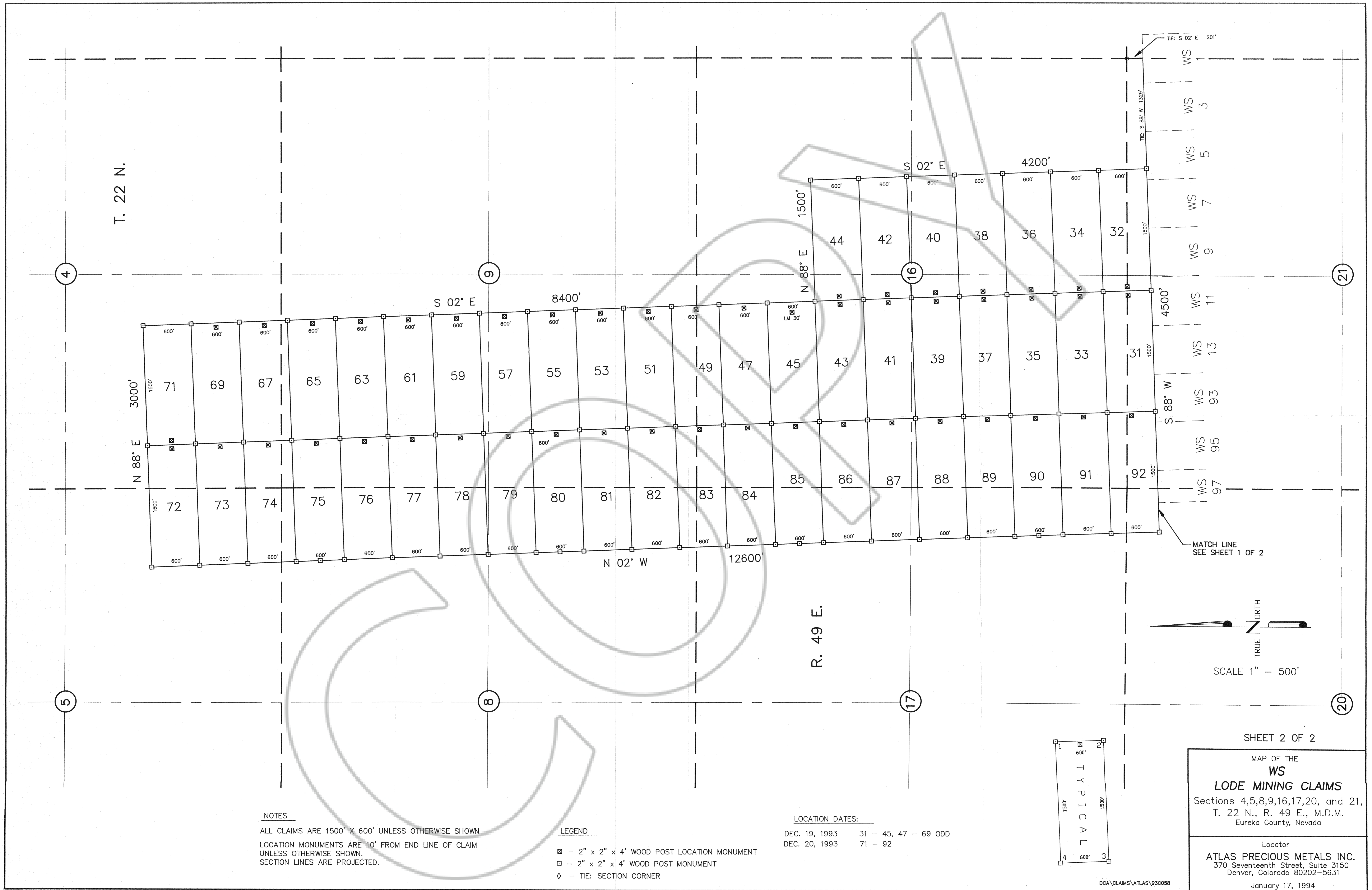
22

29

27

28

21



T. 22 N.

R. 49 E.

NOTES

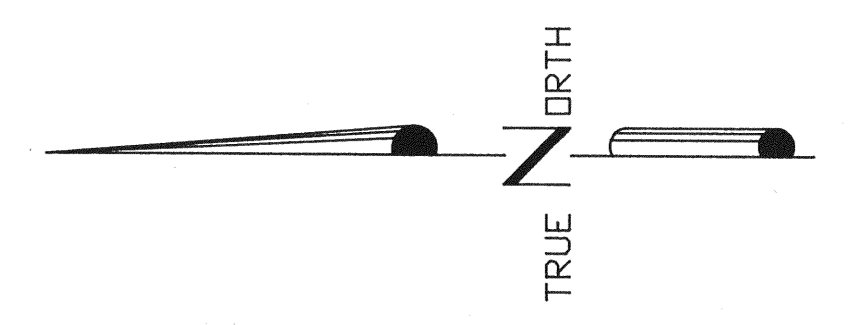
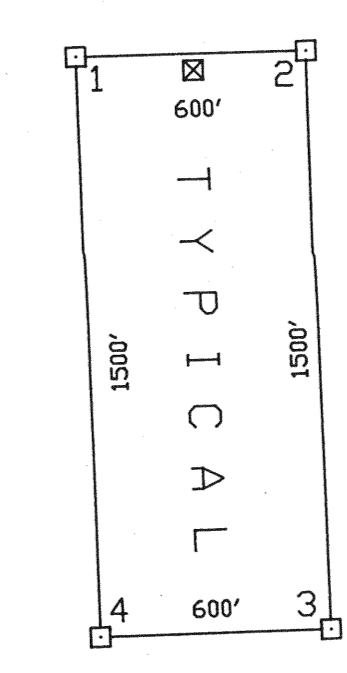
ALL CLAIMS ARE 1500' X 600' UNLESS OTHERWISE SHOWN
 LOCATION MONUMENTS ARE 10' FROM END LINE OF CLAIM
 UNLESS OTHERWISE SHOWN.
 SECTION LINES ARE PROJECTED.

LEGEND

- ☒ - 2" x 2" x 4' WOOD POST LOCATION MONUMENT
- - 2" x 2" x 4' WOOD POST MONUMENT
- ◇ - TIE: SECTION CORNER

LOCATION DATES:

DEC. 19, 1993 31 - 45, 47 - 69 ODD
 DEC. 20, 1993 71 - 92



SCALE 1" = 500'

SHEET 2 OF 2

MAP OF THE
WS
LODE MINING CLAIMS
 Sections 4,5,8,9,16,17,20, and 21,
 T. 22 N., R. 49 E., M.D.M.
 Eureka County, Nevada

Locator
ATLAS PRECIOUS METALS INC.
 370 Seventeenth Street, Suite 3150
 Denver, Colorado 80202-5631

January 17, 1994

150909

FILED AT THE REQUEST OF *Atlas Precious Metals*
 on Feb 23rd 1994, at 30 mins, past 12p. M.
 RECORDS OF EUREKA COUNTY, NEVADA M.N. REBALEATI, Recorder
 File No: 150909 Fee \$ 735⁰⁰