

TIE POINT:

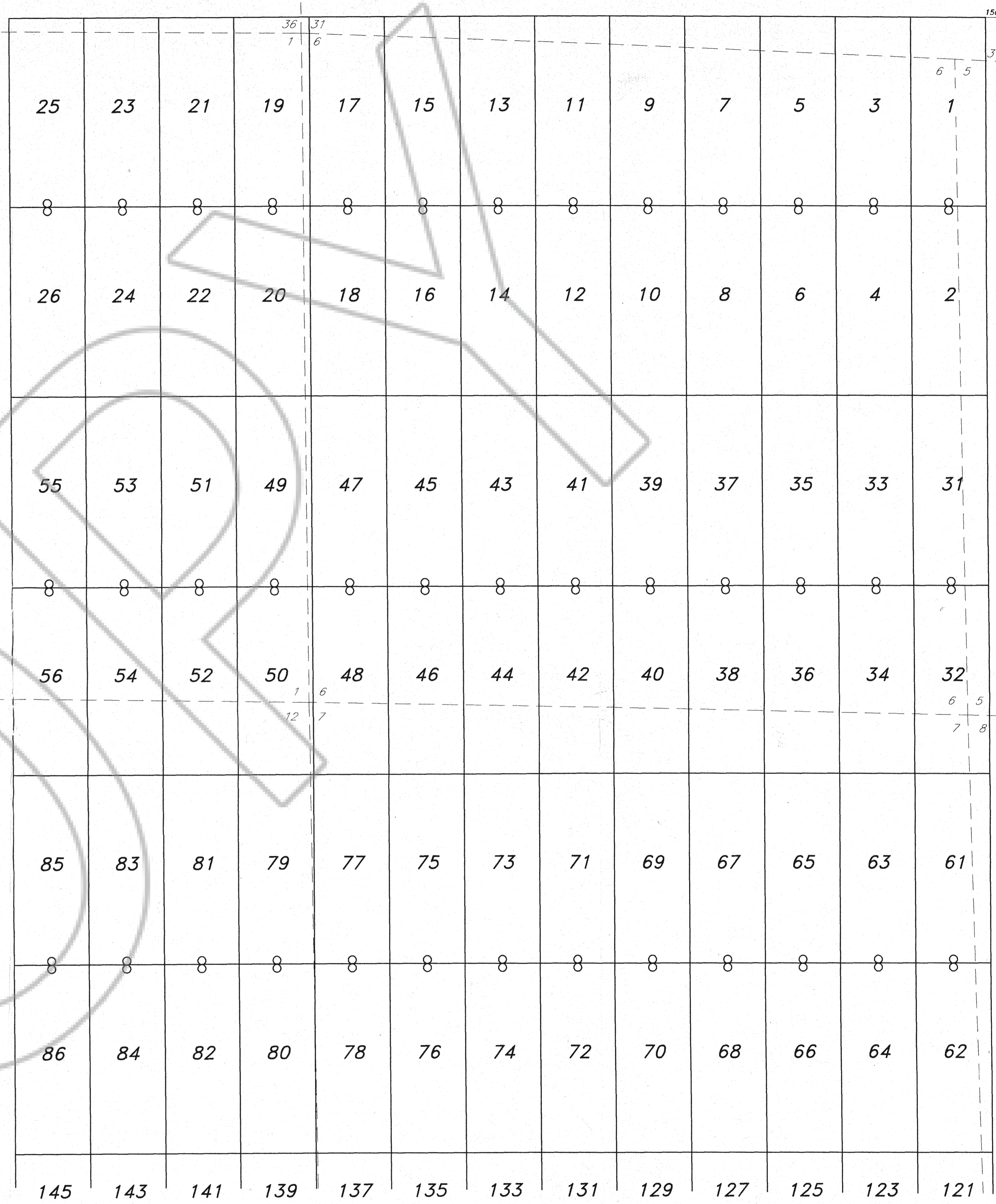
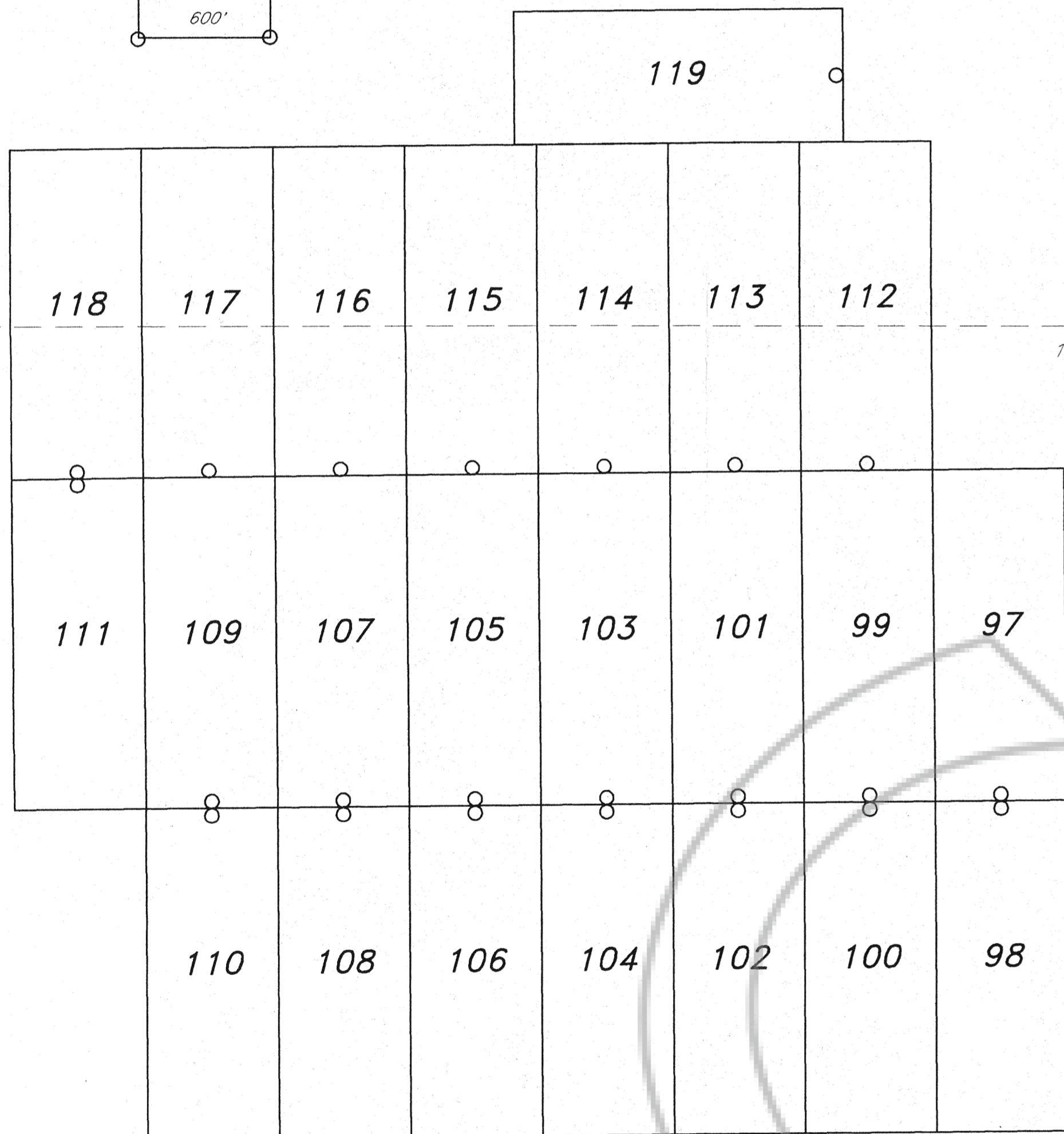
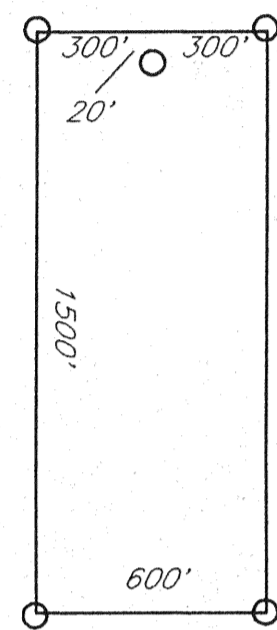
The NE corner of RATIO #1 is 350' due North and 150' due West of the SE corner of Section 31, T18N, R54E.

LOCATION DATES:

Dec. 8, 1993 RATIO 97-118, 145, 204-210 (even)
 Dec. 9, 1993 RATIO 184-202 (even), 231-258, 277-301, 307-316
 Dec. 10, 1993 RATIO 31-56, 61-86, 121-143 (odd)
 Dec. 11, 1993 RATIO 1-26
 Dec. 12, 1993 RATIO 317, 319, 320
 Dec. 13, 1993 RATIO 306
 Dec. 14, 1993 RATIO 119

All monuments are 2"x2"x4' wooden posts, and are buried 1 foot.
 All claims are 1500' x 600' with location monuments located 20' in from end lines, except where noted.

TYPICAL CLAIM:

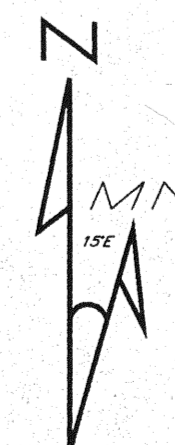


T 18 N
T 17 N

LOCATOR:
 PLACER DOME U.S.A. Inc.
 240 S. Rock Blvd., #117
 Reno, NV 89502

LOCATION:
 Section 36 T18N, R53E
 Section 31 T18N, R54E
 Sections 1, 2, 11-14, 23-26, 36 T17N, R53E
 Sections 5-8, 17-20, 30, 31 T17N, R53E
 Mount Diablo Base Line and Meridian
 Eureka County, Nevada

FILED AT THE REQUEST OF *Placer Dome*
 on *Mar. 4th 1994*, at *12* mins. past *12* M.
 RECORDS OF EUREKA COUNTY, NEVADA M. N. REBALEATI, Recorder
 File No. **151214** Fee \$ *15.60*



151214

Magnetic Declination 15'E

RATIO 1-26, 31-56, 61-86, 97-119, 121-145 (odd), 184-210 (even), 231-258, 277-301, 306-317, 319, 320 LODE MINING CLAIMS		
Scale: 1"=500'	Located: Dec. 8-15, 1993	Drawn By: GH
Mar. 2, 1994	Completed: Dec. 15, 1993	Revised:
Locator: PLACER DOME U.S.A. Inc., 240 S. Rock Blvd., #117, Reno, NV 89502		
Staking Contractor: Contract Geological Services, Inc., 1395 Greg St., Suite 108, Sparks, Nevada 89431		Map 1 of 3

110	108	106	104	102	100	98
-----	-----	-----	-----	-----	-----	----

R 53 E					R 54 E								
86	84	82	80	78	76	74	72	70	68	66	64	62	
145	143	141	139	137	135	133	131	129	127	125	123	121	

T 17 N

210	208	206	204	202	200	198	196	194	192	190	188	186	184
257	255	253	251	249	247	245	243	241	239	237	235	233	231
258	256	254	252	250	248	246	244	242	240	238	236	234	232

LOCATOR:
 PLACER DOME U.S.A. Inc.
 240 S. Rock Blvd., #117
 Reno, NV 89502

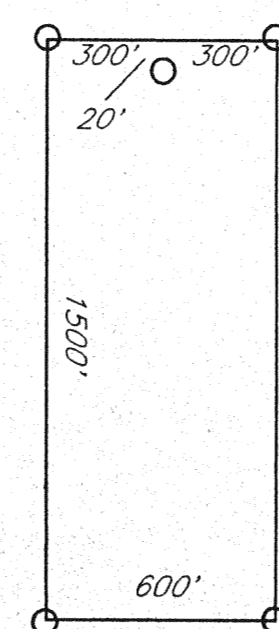
LOCATION:
 Section 36 T18N, R53E
 Section 31 T18N, R54E
 Sections 1, 2, 11-14, 23-26, 36 T17N, R53E
 Sections 5-8, 17-20, 30, 31 T17N, R53E
 Mount Diablo Base Line and Meridian
 Eureka County, Nevada

All monuments are 2"x2"x4' wooden posts,
 and are buried 1 foot.
 All claims are 1500' x 600' with location monuments
 located 20' in from end lines, except where noted.

TIE POINT:
 The NE corner of RATIO #1 is 350' due North and 150' due West
 of the SE corner of Section 31, T18N, R54E.

LOCATION DATES:
 Dec. 8, 1993 RATIO 97-118, 145, 204-210 (even)
 Dec. 9, 1993 RATIO 184-202 (even), 231-258, 277-301, 307-316
 Dec. 10, 1993 RATIO 31-56, 61-86, 121-143 (odd)
 Dec. 11, 1993 RATIO 1-26
 Dec. 12, 1993 RATIO 317, 319, 320
 Dec. 13, 1993 RATIO 306
 Dec. 14, 1993 RATIO 119

TYPICAL CLAIM:

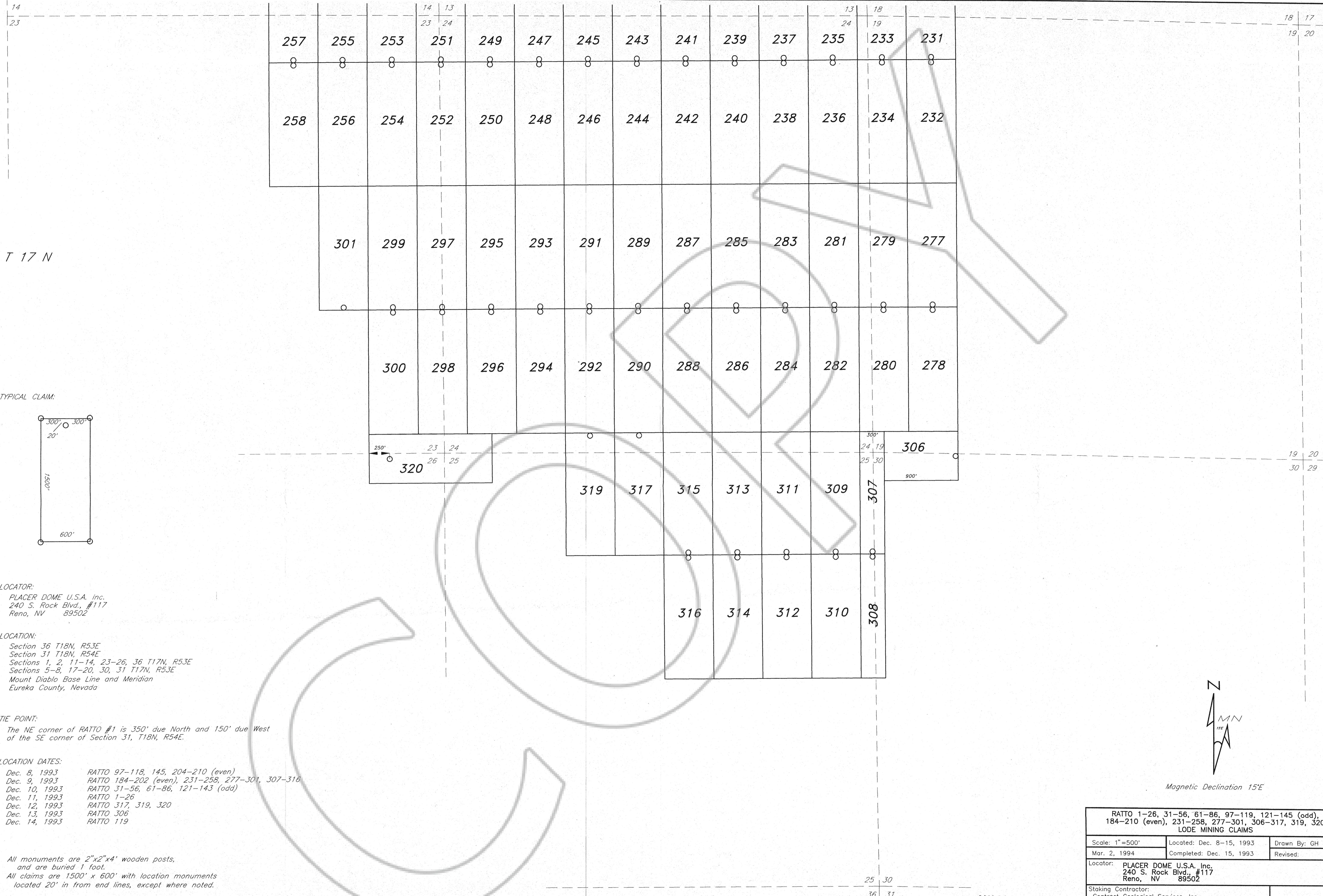


151214

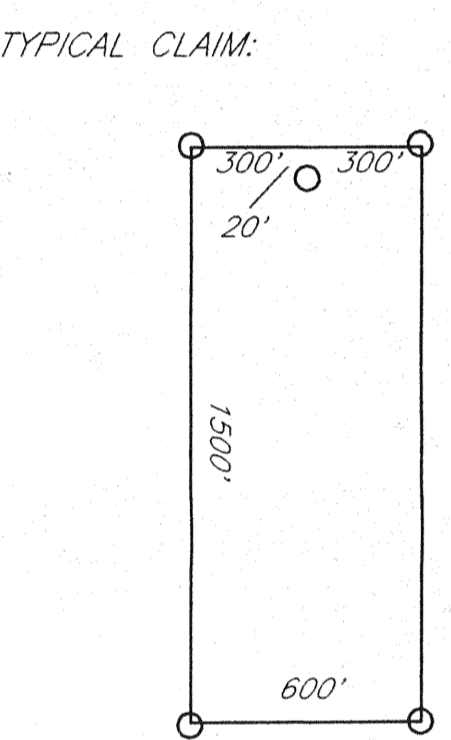
Magnetic Declination 15'E

FILED AT THE REQUEST OF Placer Dome
 on Mar. 28 1994 at 17 mins, past 12 M.
 RECORDS OF EUREKA COUNTY, NEVADA M. H. REBELETTI, Recorder
 File No. 151214 Fee \$ 6.50

RATIO 1-26, 31-56, 61-86, 97-119, 121-145 (odd), 184-210 (even), 231-258, 277-301, 306-317, 319, 320 LODE MINING CLAIMS		
Scale: 1"=500'	Located: Dec. 8-15, 1993	Drawn By: GH
Mar. 2, 1994	Completed: Dec. 15, 1993	Revised:
Locator: PLACER DOME U.S.A. Inc. 240 S. Rock Blvd., #117 Reno, NV 89502		
Staking Contractor: Contract Geological Services, Inc. 1395 Greg St., Suite 108, Sparks, Nevada 89431		Map 2 of 3



T 17 N



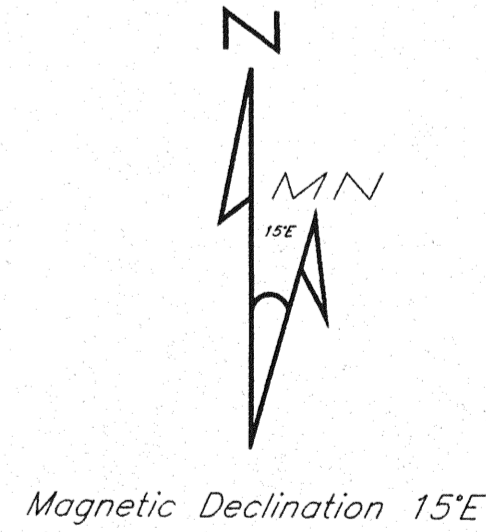
LOCATOR:
 PLACER DOME U.S.A. Inc.
 240 S. Rock Blvd., #117
 Reno, NV 89502

LOCATION:
 Section 36 T18N, R53E
 Section 31 T18N, R54E
 Sections 1, 2, 11-14, 23-26, 36 T17N, R53E
 Sections 5-8, 17-20, 30, 31 T17N, R53E
 Mount Diablo Base Line and Meridian
 Eureka County, Nevada

TIE POINT:
 The NE corner of RATIO #1 is 350' due North and 150' due West
 of the SE corner of Section 31, T18N, R54E.

LOCATION DATES:
 Dec. 8, 1993 RATIO 97-118, 145, 204-210 (even)
 Dec. 9, 1993 RATIO 184-202 (even), 231-258, 277-301, 307-316
 Dec. 10, 1993 RATIO 31-56, 61-86, 121-143 (odd)
 Dec. 11, 1993 RATIO 1-26
 Dec. 12, 1993 RATIO 317, 319, 320
 Dec. 13, 1993 RATIO 306
 Dec. 14, 1993 RATIO 119

All monuments are 2"x2"x4' wooden posts,
 and are buried 1 foot.
 All claims are 1500' x 600' with location monuments
 located 20' in from end lines, except where noted.



RATIO 1-26, 31-56, 61-86, 97-119, 121-145 (odd), 184-210 (even), 231-258, 277-301, 306-317, 319, 320 LODE MINING CLAIMS		
Scale: 1"=500'	Located: Dec. 8-15, 1993	Drawn By: GH
Mar. 2, 1994	Completed: Dec. 15, 1993	Revised:
Locator: PLACER DOME U.S.A. Inc. 240 S. Rock Blvd., #117 Reno, NV 89502		
Staking Contractor: Contract Geological Services, Inc. 1395 Greg St., Suite 108, Sparks, Nevada 89431		Map 3 of 3

151214

R 53 E R 54 E

FILED AT THE REQUEST OF *Placer Dome*
 Mar. 4th 1994
 RECORDS OF EUREKA COUNTY, NEVADA
 REC'D BY REC'DER
 File # 151214