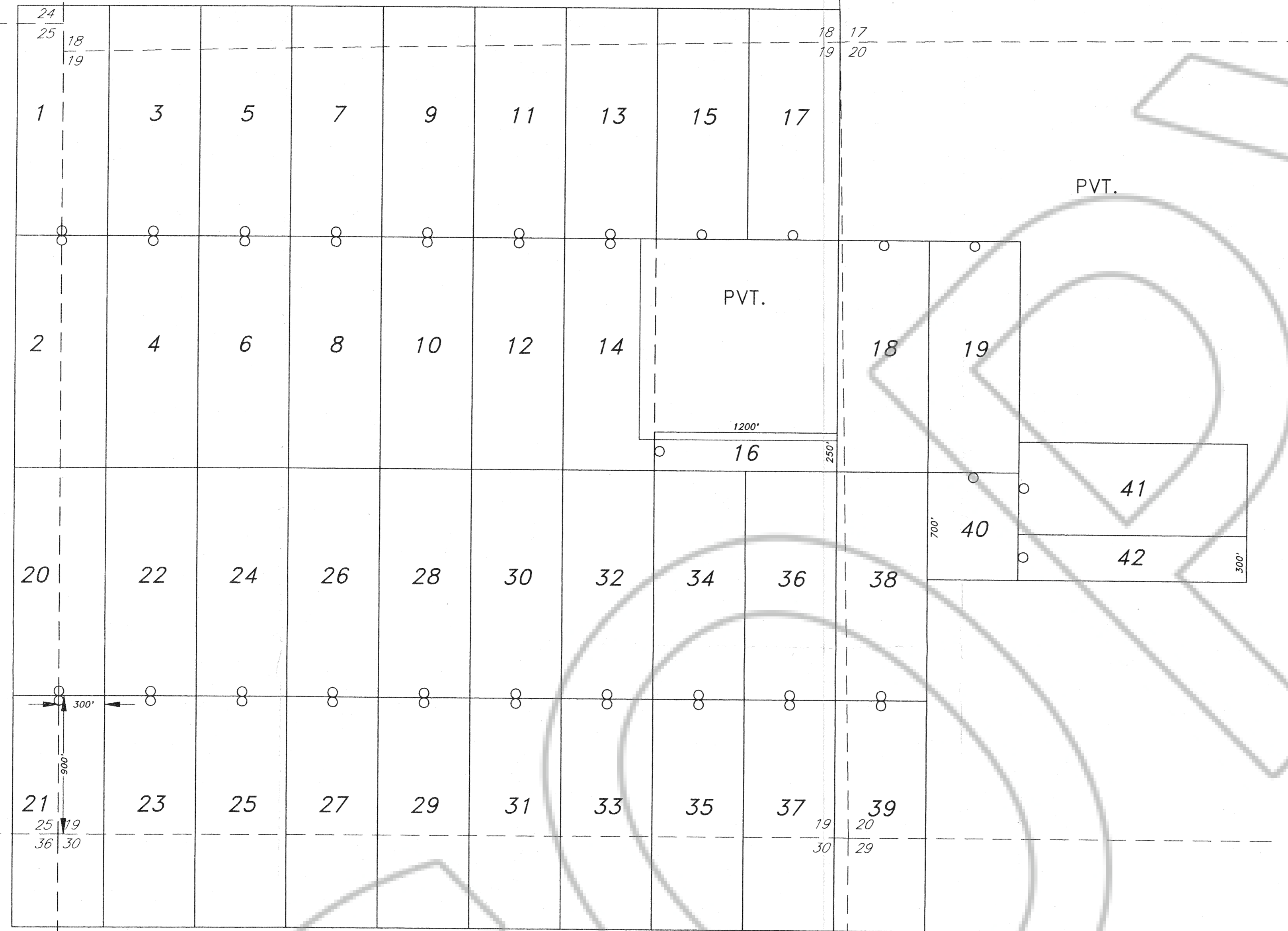


R 51 E | R 52 E

T 20 N



LOCATOR:
 PLACER DOME U.S.A. Inc.
 240 S. Rock Blvd., #117
 Reno, NV 89502

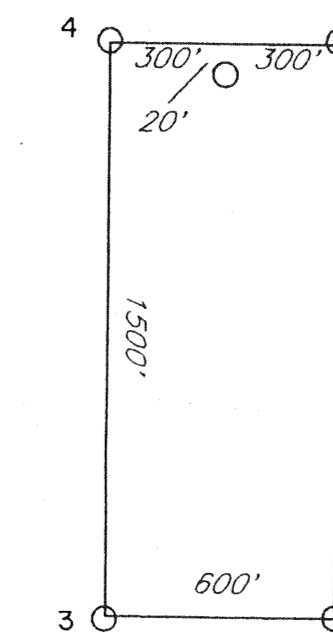
LOCATION:
 Section 24, 25, 36 T20N, R51E
 Section 18-20, 29, 30 T20N, R52E
 Mount Diablo Base Line and Meridian
 Eureka County, Nevada

TIE POINT:
 The NE corner of LM-C 21 is 900' due North and 300' due East
 of the SW corner of Section 19, T20N, R52E.

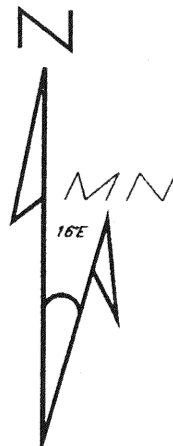
LOCATION DATES:
 Dec. 19, 1993 LM-C 1-42

All monuments are 2"x2"x4' wooden posts,
 and are buried 1 foot.
 All claims are 1500' x 600' with location monuments
 located 20' in from end lines, except where noted.

TYPICAL CLAIM:



FILED AT THE REQUEST OF Placer Dome
 on March 14 1994, at 16 mins, past 3:20 P.
 RECORDS OF EUREKA COUNTY, NEVADA M. H. REBALEATI Recorder
 File No. 151476 Fee \$ 2.30



Magnetic Declination 16'E



151476

LM-C 1-42 LODE MINING CLAIMS		
Scale: 1"=500'	Located: Dec. 19, 1993	Drawn By: GH
Jan. 31, 1994	Completed: Jan. 10, 1994	Revised:
Locator: PLACER DOME U.S.A. Inc. 240 S. Rock Blvd., #117 Reno, NV 89502		
Staking Contractor: Contract Geological Services, Inc. 1395 Greg St., Suite 108, Sparks, Nevada 89431		Map 1 of 1