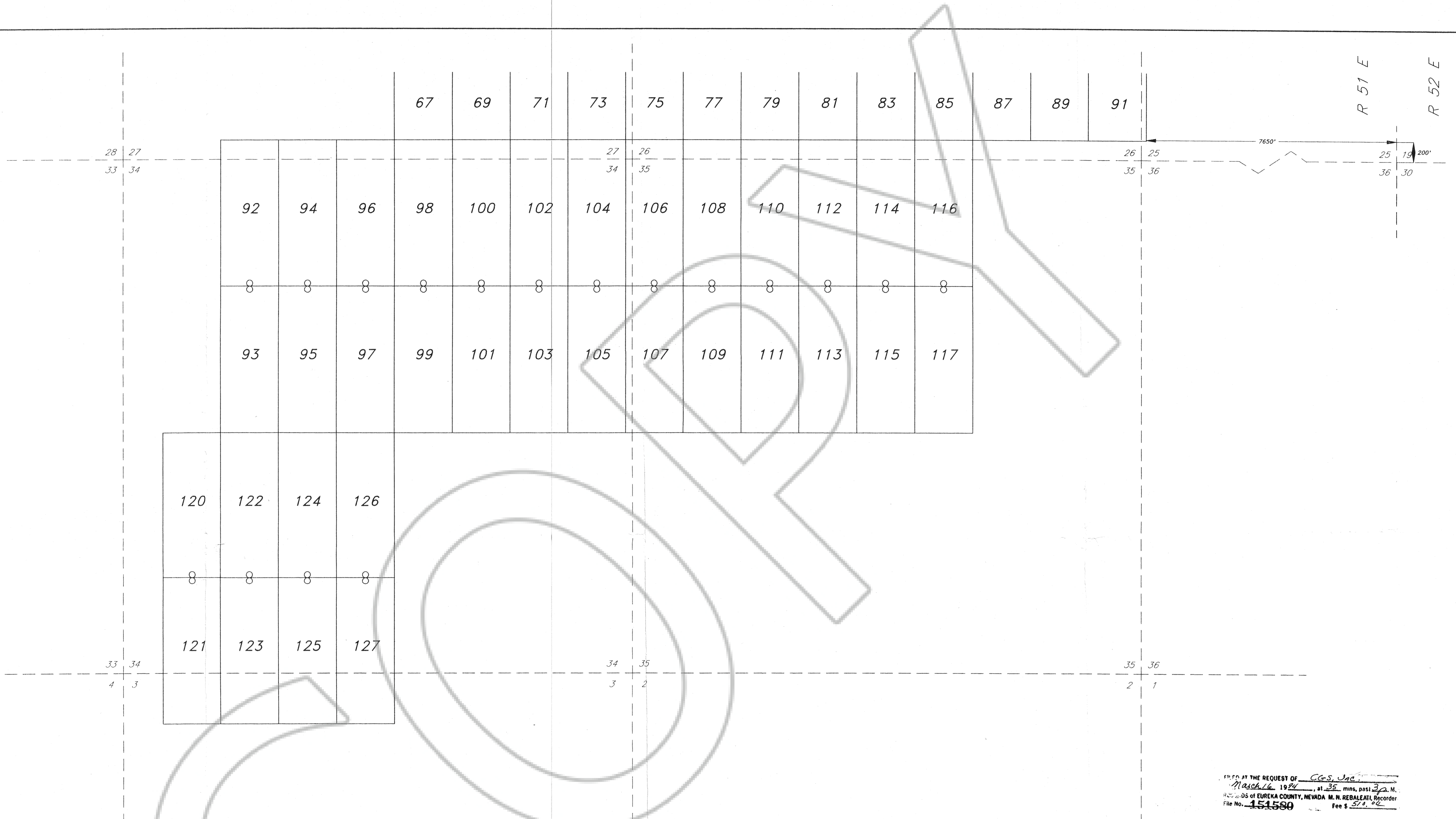


FILED AT THE REQUEST OF C.G.S. Inc.  
 March 16, 1994, at 3:35 p.m., 0311-372, W.  
 RECORDER OF DEEDS, EUREKA COUNTY, NEVADA 60 N. REBELE ST., RENO, NV  
 Fee \$ 62.35

LM-B 10, 12-32, 42, 44-65, 67, 69-117, 120-127 LODE MINING CLAIMS		
Scale: 1"=500'	Located: Dec. 17-18, 1993	Drawn By: GH
Jan. 31, 1994	Completed: Jan. 10, 1994	Revised:
Locator: PLACER DOME U.S.A. Inc. 240 S. Rock Blvd., #117 Reno, NV 89502		
Staking Contractor: Contract Geological Services, Inc. 1395 Greg St., Suite 108, Sparks, Nevada 89431		Map 1 of 2



LOCATOR:  
 PLACER DOME U.S.A. Inc.  
 240 S. Rock Blvd., #117  
 Reno, NV 89502

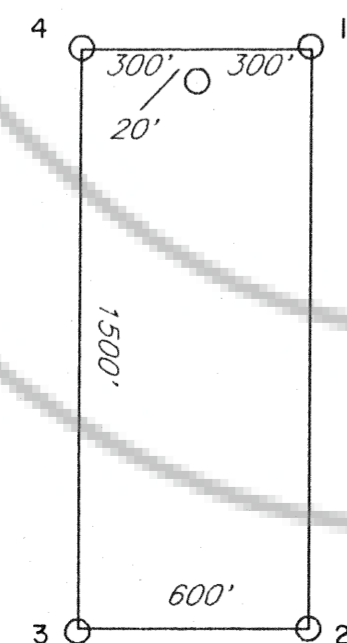
LOCATION:  
 Section 22-27, 34-35 T20N, R51E  
 Section 3 T19N, R51E  
 Mount Diablo Base Line and Meridian  
 Eureka County, Nevada

TIE POINT:  
 The SE corner of LM-B #91 is 7650' due West and 200' due North  
 of the SW corner of Section 19, T20N, R52E.

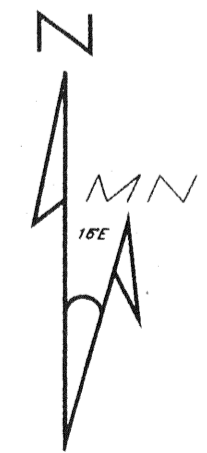
LOCATION DATES:  
 Dec. 17, 1993 LM-B 42, 44, 45-48, 67, 69-117  
 Dec. 18, 1993 LM-B 10, 12-32, 49-65, 120-127

All monuments are 2"x2"x4' wooden posts,  
 and are buried 1 foot.  
 All claims are 1500' x 600' with location monuments  
 located 20' in from end lines.

TYPICAL CLAIM:



FILED AT THE REQUEST OF CGS, Inc.  
March 16, 1994 at 35 mins, past 32 M.  
 RECORDS OF EUREKA COUNTY, NEVADA M. N. REBALEATI, Recorder  
 File No. 151580 Fee \$ 570.00



151580 Magnetic Declination 16'E

LM-B 10, 12-32, 42, 44-65, 67, 69-117, 120-127 LODE MINING CLAIMS		
Scale: 1"=500'	Located: Dec. 17-18, 1993	Drawn By: GH
Jan. 31, 1994	Completed: Jan. 10, 1994	Revised:
Locator: PLACER DOME U.S.A. Inc. 240 S. Rock Blvd., #117 Reno, NV 89502		
Staking Contractor: Contract Geological Services, Inc. 1395 Greg St., Suite 108, Sparks, Nevada 89431		Map 2 of 2