

R 51 E

LOCATOR:

GREAT BASIN EXPLORATION AND MINING CO.  
3400 Kawai Court, Suite 208  
Reno, Nevada 89509

LOCATION:

Sections 17, 18, T22N, R51E  
Mount Diablo Base Line and Meridian  
Eureka County, Nevada

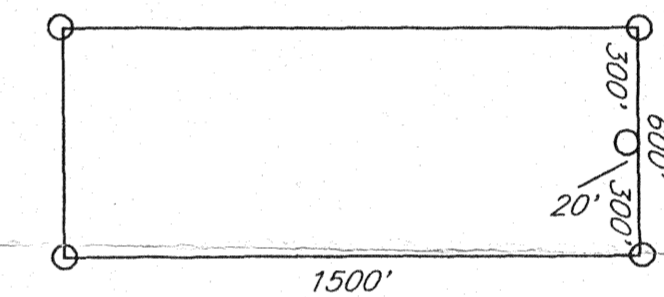
TIE POINT:

The NE corner PREDATOR 1 is 700' N and  
1250' E from the SW corner of Section 17,  
T 22 N, R 51 E.

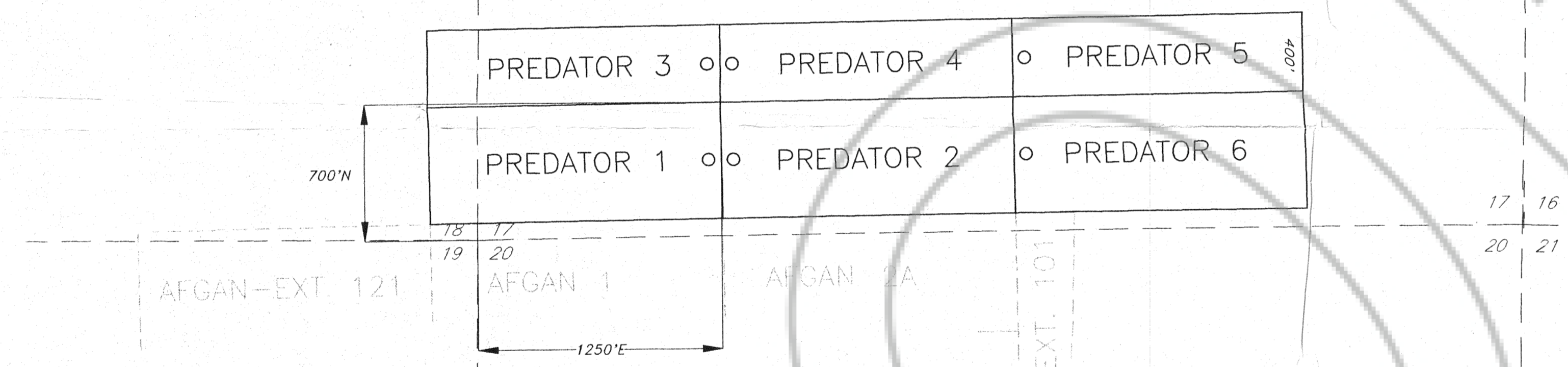
NOTES:

Location Monuments are 20' in from end center  
All monuments are 2"x2"x4' long wooden posts.  
All claims are 1500' x 600', except PREDATOR 3, 4,  
and 5, which are 1500' x 400'.

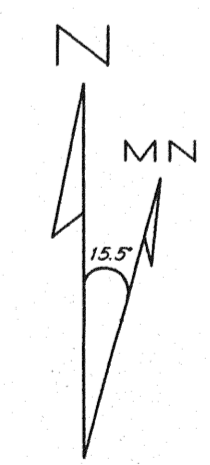
TYPICAL CLAIM:



T 22 N



EXISTING  
AFGAN CLAIMS



Magnetic Declination 15.5'

**BIG CREEK**  
EXPLORATION SERVICES

---

**PREDATOR 1-6 LODE MINING CLAIMS**

March 22, 1994	Located: 3/6/94	Drawn By: GH
	Completed: 3/12/94	Revised:

5130 Slope Drive, Sun Valley, Nevada 89433 • (702) 674-2708

FILED AT THE REQUEST OF *Great Basin Exploration*  
on Mar. 29 1994, at 38 mins. past 40 M.  
RECORDS OF EUREKA COUNTY, NEVADA M. N. REBALEATI, Recorder  
File No. 151875 Fee \$ 20