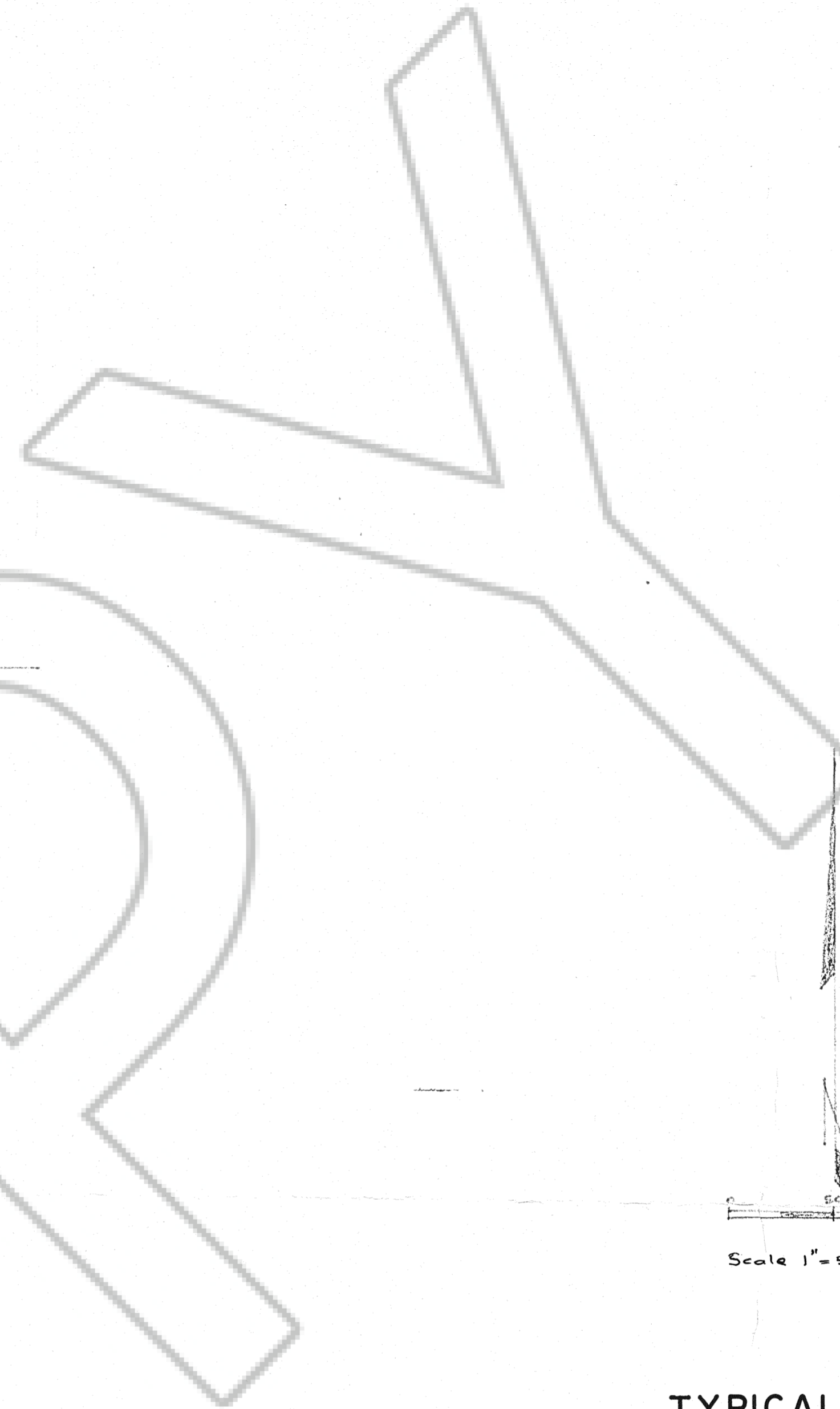
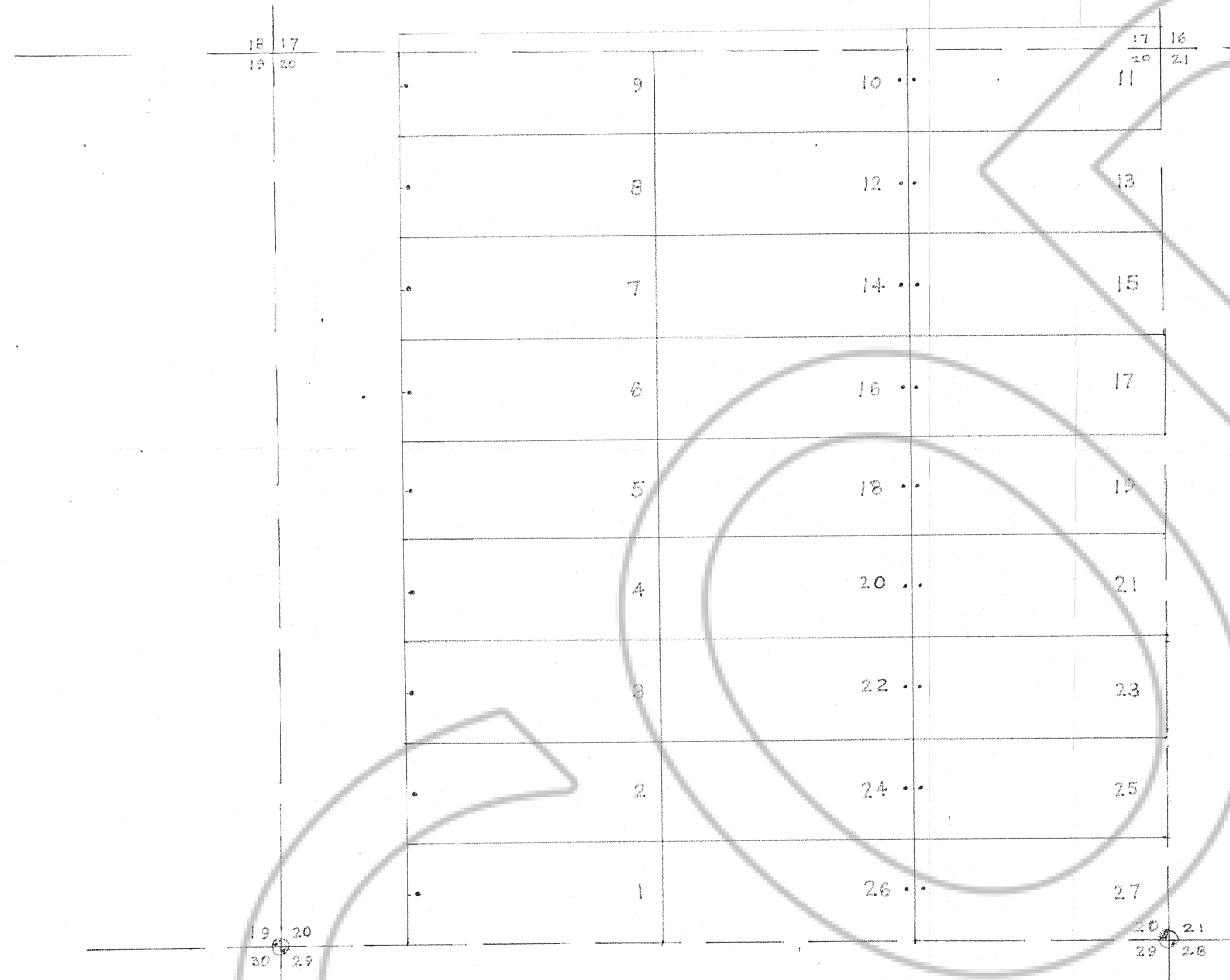
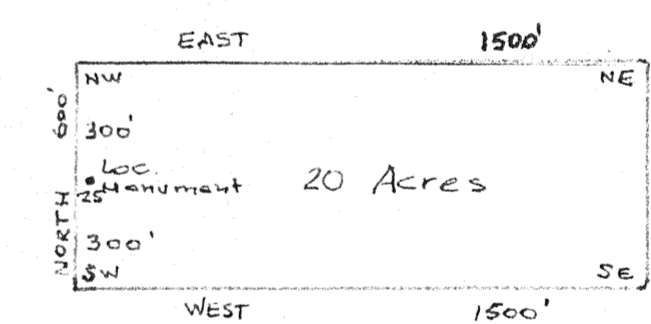


151928



Scale 1"=500'

### TYPICAL CLAIM



ALL LOCATION INSTRUMENTS APPROVED FROM THE BUREAU CENTER.

ALL CLAIM CORNERS ARE 2"x2" WOOD OR ROUND POSTS OF 2" DIAMETER OR 4"x4" DENOTES SECTION CORNERS FOUND

#### LOCATION DATES:

JAN 12, 1924 ..... 1-3  
JAN 12, 1924 ..... 9-27

FILED AT THE REQUEST OF *Mont Basin Exploration*  
on *March 29 1924*, at *47* mins. past *40* M.  
RECORDS OF EUREKA COUNTY, NEVADA M. N. REBALEATI, Recorder  
File No. **151928** Fee \$ *205.00*

**CS LODE CLAIMS**  
**No's 1-27**  
**SEC. 20, T34N, R50E, M.D.M.**  
**EUREKA COUNTY, NEVADA**  
**CLAIMANT:**  
**IDORA SILVER MINES, INC.**  
**P.O. BOX 488**  
**COEUR D'ALENE, ID. 83816.**