

R. 49 E.

T. 23 N.  
T. 22 N.

SEE SHEET #1 FOR THIS SET OF WS CLAIMS

SEE SHEET #3 FOR THIS SET OF WS CLAIMS

**NOTES**

ALL CLAIMS ARE 1500' X 600' UNLESS OTHERWISE SHOWN  
 LOCATION MONUMENTS ARE 10' FROM END LINE OF CLAIM UNLESS OTHERWISE SHOWN.  
 SECTION LINES ARE PROJECTED.

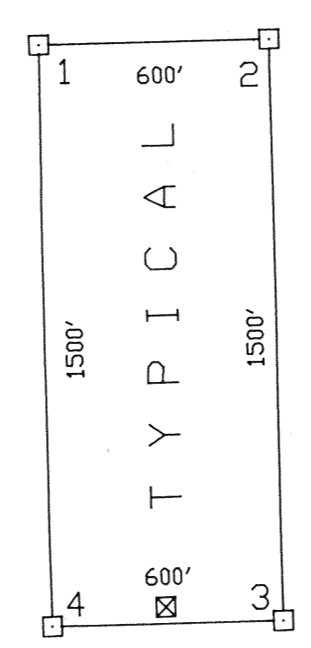
**LEGEND**

- ⊗ - 2" x 2" x 4' WOOD POST LOCATION MONUMENT
- - 2" x 2" x 4' WOOD POST MONUMENT

**LOCATION DATES:**

JAN. 20, 1994	102 - 121, 140 - 150
JAN. 21, 1994	162 - 169
JAN. 22, 1994	178 - 191
JAN. 25, 1994	192 - 203
FEB. 12, 1994	170, 172, 174, 176
FEB. 16, 1994	159, 160, 161

SCALE 1" = 500'



SHEET 1 OF 2

MAP OF THE  
**WS**  
**LODE MINING CLAIMS**  
 Sections 31, 32, and 33,  
 T. 23 N., R. 49 E., M.D.M.  
 and  
 Sections 4, 5, 6, 7, 8, and 9,  
 T. 22 N., R. 49 E., M.D.M.  
 Eureka County, Nevada

Locator  
**ATLAS PRECIOUS METALS INC.**  
 370 Seventeenth Street, Suite 3150  
 Denver Colorado 80202-5631  
 March 9, 1994

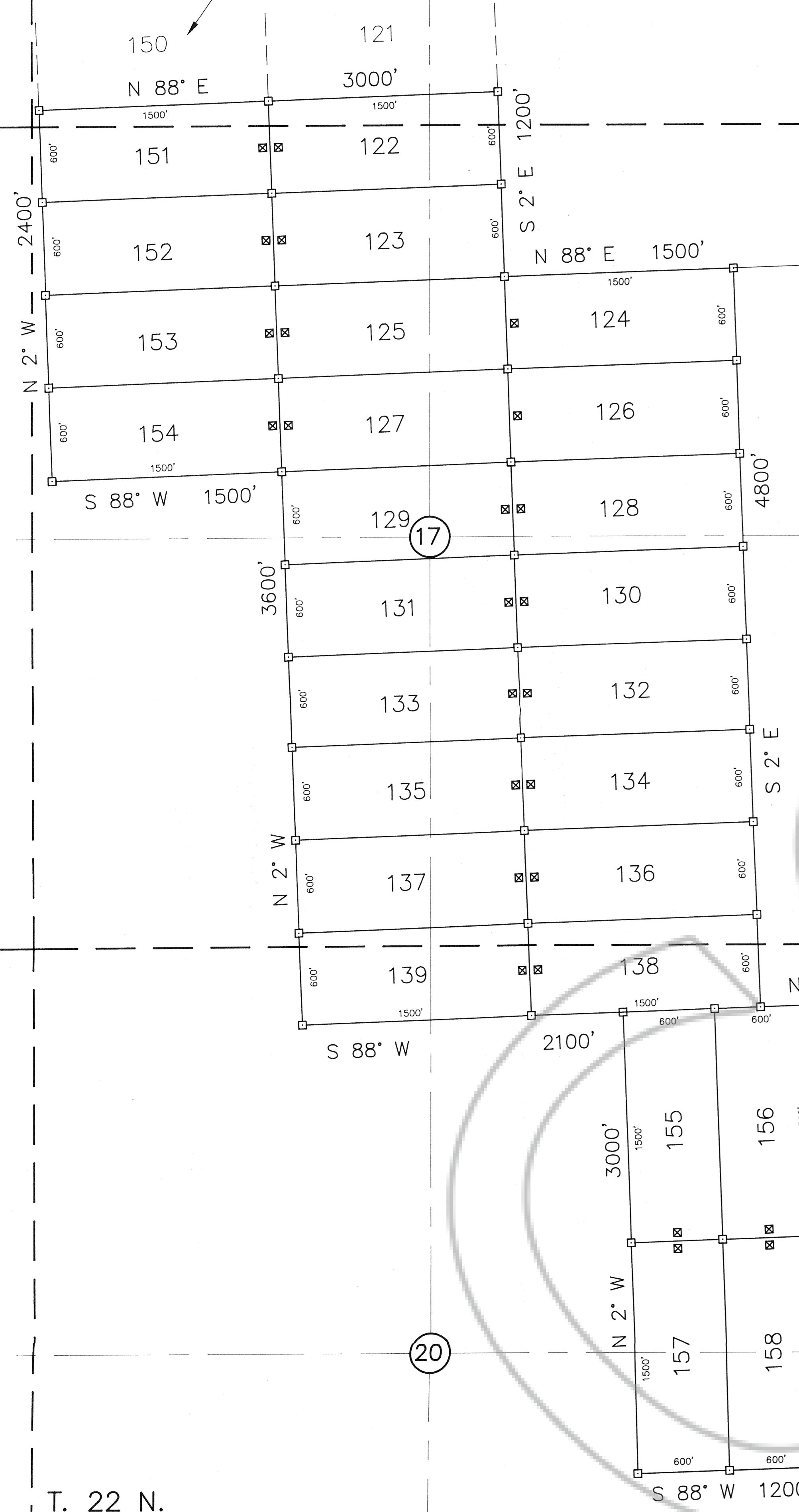
FILED AT THE REQUEST OF *Atlas Precious Metals*  
 on *April 24* 1994, at *3:32* mins. past *11 A.M.*  
 RECORDS OF EUREKA COUNTY, NEVADA M. N. REBALEATI, Recorder  
 File No. **152130** Fee \$ *100.00*

R. 49 E.

8

9

SEE SHEET #2 FOR THIS SET OF WS CLAIMS



NOTES

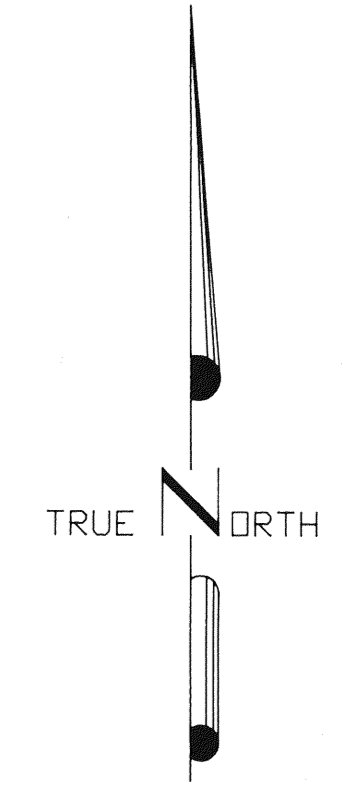
ALL CLAIMS ARE 1500' X 600' UNLESS OTHERWISE SHOWN  
 LOCATION MONUMENTS ARE 10' FROM END LINE OF CLAIM UNLESS OTHERWISE SHOWN.  
 SECTION LINES ARE PROJECTED.

LEGEND

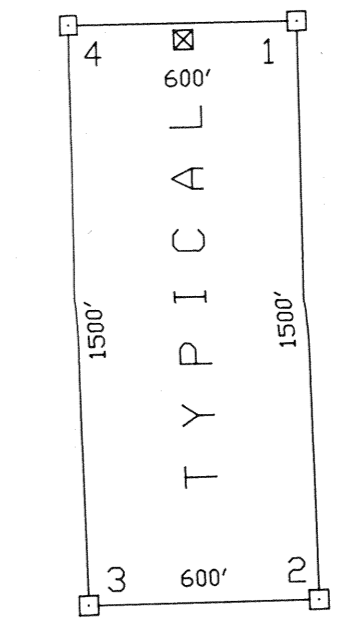
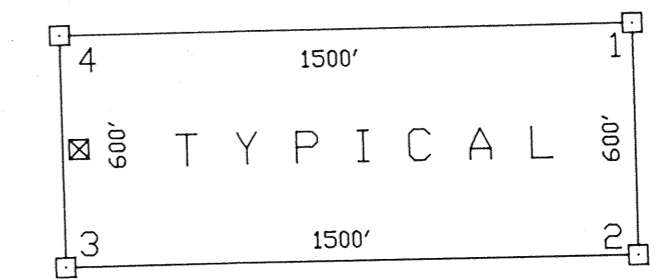
- ☒ - 2" x 2" x 4' WOOD POST LOCATION MONUMENT
- ☐ - 2" x 2" x 4' WOOD POST MONUMENT

LOCATION DATES:

JAN. 20, 1994 122 - 125, 127, 151 - 154  
 JAN. 21, 1994 126, 128 - 139, 155 - 158



SCALE 1" = 500'



SHEET 2 OF 2

MAP OF THE  
**WS**  
**LODE MINING CLAIMS**  
 Sections 8, 16, 17, 20, and 21,  
 T. 22 N., R. 49 E., M.D.M.  
 Eureka County, Nevada

Locator  
**ATLAS PRECIOUS METALS INC.**  
 370 Seventeenth Street, Suite 3150  
 Denver Colorado 80202-5631  
 March 9, 1994

T. 22 N.

FILED AT THE REQUEST OF *Atlas Precious Metals*  
 on *April 5 19 94* at *32* mins, past *11:00* A.M.  
 RECORDS OF EUREKA COUNTY, NEVADA M. N. REBELETTI, Recorder  
 File No. **152130** Fee \$ **370.00**

152130