

EXPLANATION
 The From the SE corner of Section 32, T24N, R48E, to the NE corner of KS 29 is 4200' due East, and 600' due North.
 The From the SE corner of Section 33, T24N, R48E, to the NE corner of KS 7 is 1600' due East, and 1800' due South.
 The From the SE corner of Section 33, T24N, R48E, to the NE corner of KS 29 is 1800' due East, and 7200' due South.

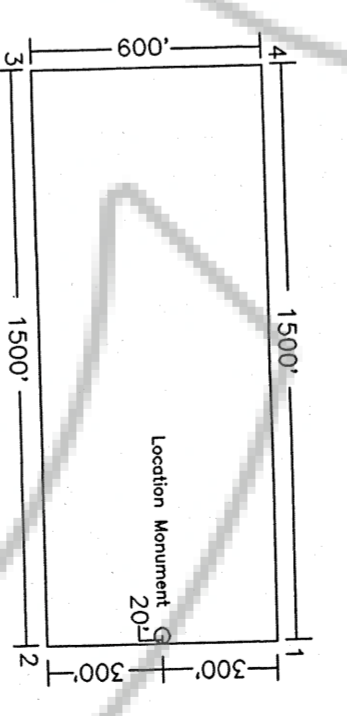
All claims are located in T23-24N, R48E, Eureka County, NV.
 Dashed lines represent projected section lines.

All claims are 600 feet wide by 1300 feet long with the exception of claim 29 which is 300 feet from either side.

Total number of claims = 34.
 Located: KS 7-18, 25-28 located on 3/26/94
 Located: KS 29-46 located on 5/30/94
 Monumenting completed: 5/22/94

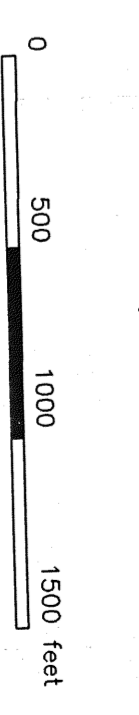
Scale: 1"=500'
 NOTE: This map is only a graphical depiction of the claims and is not to be used for surveying or any other purpose that requires exactness in accuracy.

This material is furnished by Placer Dome U.S., Inc., without warranty expressed or implied, except that this material was correct to the best of its field knowledge at Placer Dome U.S., Inc. expressly disclaims liability for any factual or interpretive errors in the material.



Stock Raising Homestead Patents

Claims Located in Accordance with the Stock Raising Homestead Act, as Amended by Public Law 103-233.
 The "Notice of Intent to Locate Mining Claims on Stock" filed in Public Land Law 103-233 are on file with the Bureau of Land Management in files NMC-58531, 58532, and 58533.



PLACER DOME U.S. INC.	
BRANK: CMB	KS 7-18, KS 25-28 and KS 29-46
DATE: 4-18-94	Eureka County, NV
REVIEWED:	
DATE:	

ACAD FILE: K52-CUAMS
 Watt Hot Springs 7.5 Minute Quad

153249

FILED AT THE REQUEST OF *Placer Dome*
 on *April 27* 19 *94* at *2* mins, past *3:00* P.M.
 RECORDS OF EUREKA COUNTY, NEVADA, M. N. REBELEAU, Recorder
 File No. **153249** Fee \$ *50*