

EXPLANATION

Tie: from the found common SE corner of Section 21 and the SW corner of Section 22, T24N, R48E, 820' north and 300' west to the northwest corner, ie corner #1 of KS 113.

All claims are located in T24N, R48E, Eureka County, NV

Dashed lines represent projected section lines.

All claims are 600 feet wide by 1500 feet long with the location monument set 20 feet from the end line and 300 feet from either side, unless otherwise noted.

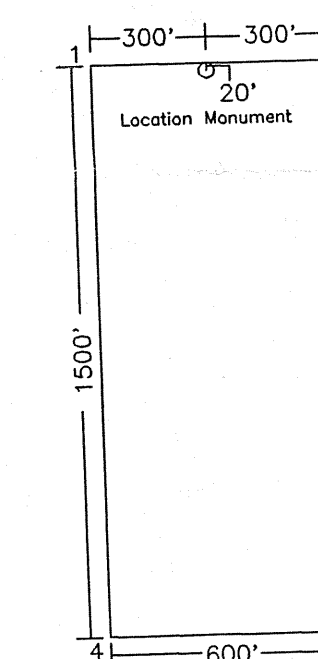
Total number of claims= 36.

KS 100-136 located: 3/30/94
Monumenting completed: 3/30/94

Scale: 1"=500'

NOTE: This map is only a graphical depiction of the location of the properties and is not to be used for surveying or any other purpose that requires exactness in accuracy.

This material is furnished by Placer Dome U.S. Inc., without warranty or representation of any kind, expressed or implied, except that this material was correct to the best of its knowledge at the time the material was prepared. Placer Dome U.S. Inc. expressly disclaims liability for any factual or interpretive errors in the material.



PLACER DOME U.S. INC.	
DRAWN: CMB	KS 100-135
DATE: 4-14-94	Eureka County, NV
REVISED:	ACAD FILE: KS-CLM1
DATE:	Walt Hot Springs 7.5 Minute Quad

FILED AT THE REQUEST OF Placer Dome
of Eureka, 19 94, at 6 mins, Dist. 32 M.
RECORDS OF EUREKA COUNTY, NEVADA M. N. REBALEATI, Recorder
File # 53285 Fee \$ 5.00