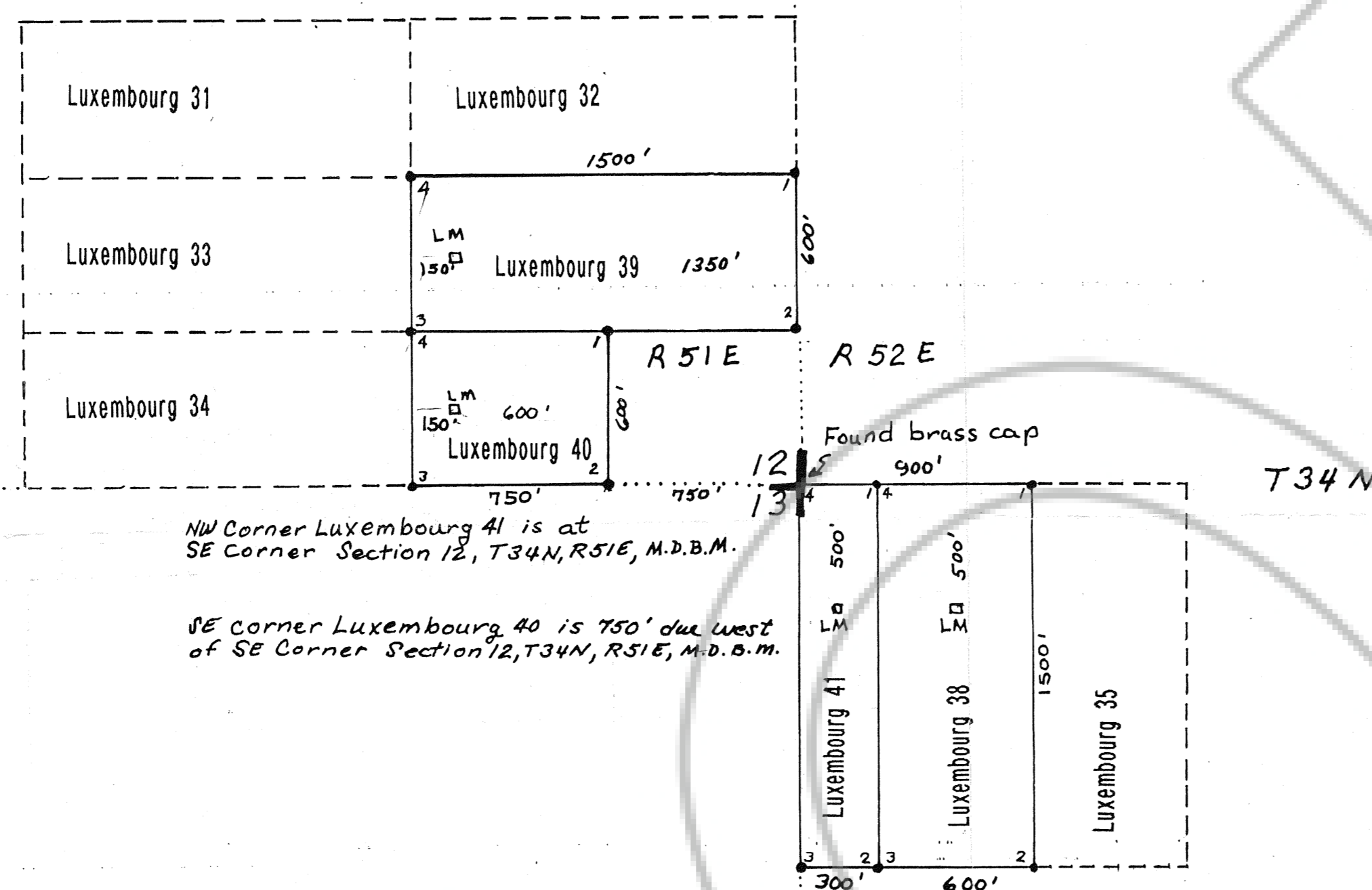


Sec. 12

Sec. 7



NW Corner Luxembourg 41 is at SE Corner Section 12, T34N, R51E, M.D.B.M.

SE Corner Luxembourg 40 is 750' due west of SE Corner Section 12, T34N, R51E, M.D.B.M.

LUXEMBOURG 38, 39, 40, & 41 LODE CLAIMS

EUREKA COUNTY, NEVADA

SECTION 12, T 34 N, R 51 E, and SECTION 18, T34 N, R 52 E, M.D.B.M.

Located and owned by:

Franco-Nevada Mining Corporation, Inc. and Euro-Nevada Mining Corporation, Inc.

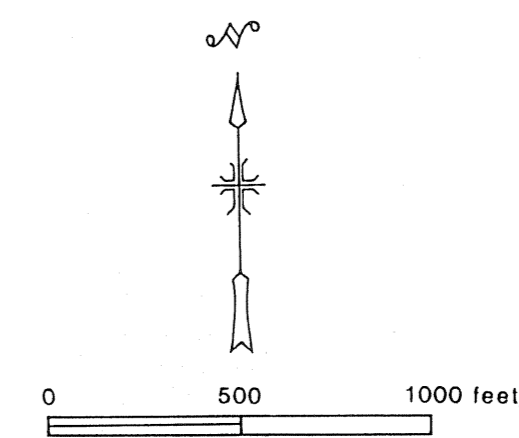
6121 Lakeside Drive, Suite 240

Reno, Nevada 89511

Location dates:

March 31, 1994 Luxembourg 39, 40

April 16, 1994 Luxembourg 38, 41



Scale: 1" = 500'

All corners and location monuments are 4' X 2" X 2" wooden posts with aluminum tags. Numbering posts begin in the NE claim corner.

FILED AT THE REQUEST OF *Euro-Nevada Mining*  
ON *June 24* 19*94* at *3:30* P.M. 1994  
RECORDS OF EUREKA COUNTY, NEVADA M. H. REBALEATI, Recorder  
File No. **153292** Fee \$ *60*