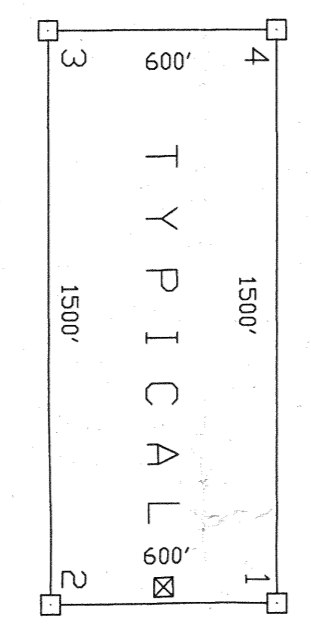


NOTE: LOCATION MONUMENTS MAY LIE ON EITHER END OF THE CLAIM.



LEGEND  
 ☒ - 2" x 2" x 4' WOOD POST LOCATION MONUMENT  
 □ - 2" x 2" x 4' WOOD POST MONUMENT

NOTES  
 ALL CLAIMS ARE 1500' X 600' UNLESS OTHERWISE SHOWN  
 LOCATION MONUMENTS ARE 10' FROM END LINE OF CLAIM UNLESS OTHERWISE SHOWN.  
 SECTION LINES ARE PROJECTED.

LOCATION DATES:  
 APRIL 14, 1994 19 - 26  
 APRIL 15, 1994 1 - 18 AND 27 - 36  
 APRIL 16, 1994 55 - 72  
 APRIL 17, 1994 37 - 54

FILED AT THE REQUEST OF **NEWMONT Exploration, Ltd.**  
 OF **2555 FIFTH STREET, SUITE 1100, DENVER, COLORADO 80202**  
 RECORDS OF EUREKA COUNTY, NEVADA, IN REPLY TO REQUEST NO. **153569**  
 THE DATE **APR 22 1994**

MAP OF THE  
**SHK 1-108**  
**LODE MINING CLAIMS**  
 Sections 2,3,4,9,10,11,12,13,14,15,  
 22,23, and 24,  
 T. 33 N., R. 50 E., M.D.M.  
 Eureka County, Nevada

Locator  
**NEWMONT EXPLORATION LIMITED**  
 555 Fifth Street  
 Elko, Nevada 89801

**153569**

DC:\CLAIMS\NEWMONT\94C008

14

13

20

12 14 16 18

11 13 15 17

TIE: FOR CLAIMS 73-108 FROM THE NORTHWEST CORNER SEC. 24, NORTH 60' THEN WEST 60' TO THE NORTHWEST CORNER OF CLAIM 89.

R. 50 E.  
R. 51 E.

NOTES

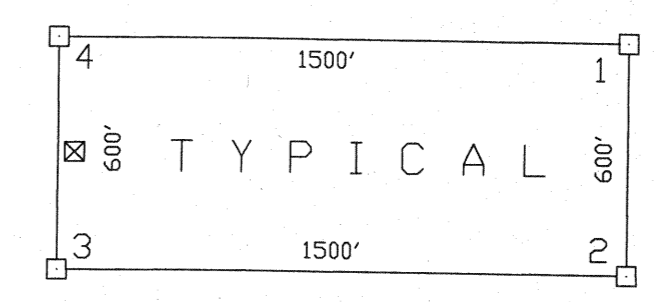
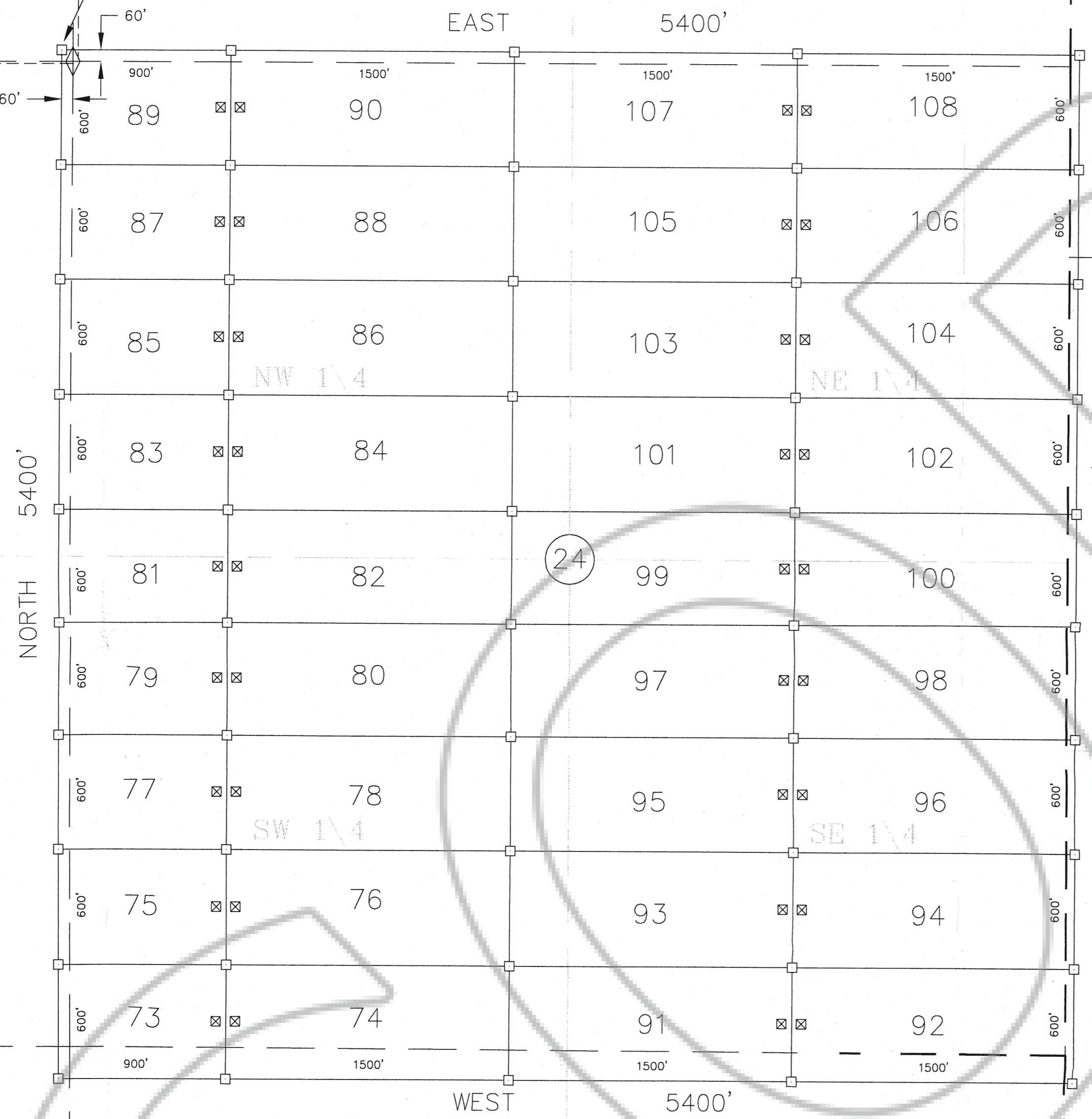
ALL CLAIMS ARE 1500' X 600' UNLESS OTHERWISE SHOWN  
LOCATION MONUMENTS ARE 10' FROM END LINE OF CLAIM UNLESS OTHERWISE SHOWN.  
SECTION LINES ARE PROJECTED.

LEGEND

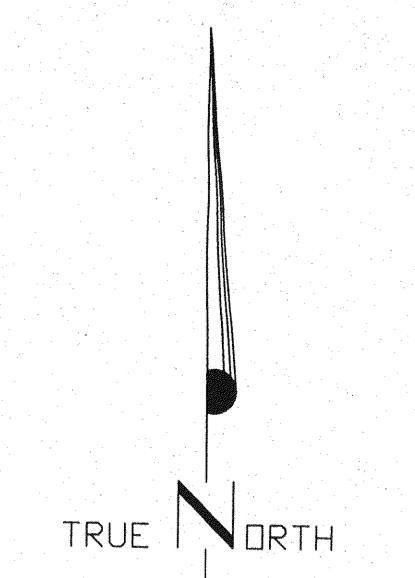
⊠ - 2" x 2" x 4' WOOD POST LOCATION MONUMENT  
□ - 2" x 2" x 4' WOOD POST MONUMENT

LOCATION DATES:

APRIL 18, 1994 73 - 90  
APRIL 19, 1994 91 - 108



NOTE: LOCATION MONUMENTS MAY LIE ON EITHER END OF THE CLAIM.



SCALE 1" = 500'

23

24

29

26

25

T. 33 N.  
NE 1/4

FILED AT THE REQUEST OF Newmont Exploration Ltd  
on July 7, 1994, at 11 mins, past 11 AM,  
RECORDS OF EUREKA COUNTY, NEVADA BY M. REBALEATI, Recorder  
File No. 153569 Fee \$ 4,620.00

SHEET 2 OF 2

MAP OF THE  
**SHK 1-108**  
LODE MINING CLAIMS  
Sections 13,14,23,24,25, and 26,  
T. 33 N., R. 50 E., M.D.M.  
Sections 20, and 29,  
T. 33 N., R. 51 E., M.D.M.  
Eureka County, Nevada

Locator

NEWMONT EXPLORATION LIMITED  
555 Fifth Street  
Elko, Nevada 89801

153569