

AFFIDAVIT AND NOTICE OF INTENT TO HOLD MINING CLAIM(S) AND SITE(S)

153640

SS.)

COUNTY OF WESTCHESTER)

STATE OF NEVADA)

TO ALL WHOM IT MAY CONCERN:

The undersigned certifies that the owner or claimant intended or intends to hold the mining claim(s), mill site(s), and/or tunnel site(s) listed below from 12:00 p.m. on September 1994 until 11:59 a.m. on September 1995 as set forth in Township exhibit "A" attached. The claims are located in Section(s) _____, in the _____ mining district, in Eureka County, Nevada.

Name of claim(s) or site(s): BIM Serial No(s):

See Exhibit "A" attached

The claim map showing said claim(s) is ~~attached hereto~~ Attached hereto, see Exhibit "B".

Name and address of owner or claimant:

Mount Hope Mines, Inc.

65 West Red Oak Lane

White Plains, NY 10604

Subscribed and sworn to before me this 8th day of

July, 1994.

NOTARY PUBLIC

Terry Saul

Suggested form-Nevada Department of Minerals Nevada-Affidavit/Notice of Intent to hold, MRS 517.230

TERRY SAUL, NOTARY PUBLIC
STATE OF NEW YORK
WESTCHESTER COUNTY
NO. 60-4814481
COMMISSION EXPIRES 12/31/94

(Revised 7/14/93)

BOOK 27 | PAGE 2 | 1

EXHIBIT "A" LIST OF CLAIMS
 MOUNT HOPE MINES, INC.
 MINING CLAIMS EXHIBITS

CLAIM	NO.	ACRES	TWP.	RANGE	SECTION	BOOK & PAGE
BOWSER	00001	18	Z2N	Z2E	52E	RMCS7479 0100 0488
BOWSER	00001	13	Z2N	Z2E	51.5E	RMCS7480 0100 0489
BOWSER	00002	7/18	Z2N	Z2E	52E	RMCS7481 0100 0490
BOWSER	00003	13	Z2N	Z2E	51.4	RMCS7482 0100 0491
BOWSER	00004	1	Z2N	Z2E	51E	RMCS7483 0100 0492
BOWSER	00008	18	Z2N	Z2E	52E	RMCS7484 0100 0493
BOWSER	00009	18	Z2N	Z2E	52E	RMCS7485 0100 0494
BOWSER	00011	7/18	Z2N	Z2E	52E	RMCS7486 0100 0495
BOWSER	00012	7	Z2N	Z2E	52E	RMCS7487 0100 0496
BOWSER	00012	12	Z2N	Z2E	51.5	RMCS7488 0100 0502
BOWSER	00014	18	Z2N	Z2E	52E	RMCS7489 0100 0500
BOWSER	00015	18	Z2N	Z2E	52E	RMCS7490 0100 0502
BOWSER	00021	12	Z2N	Z2E	51.5	RMCS7491 0100 0512
BOWSER	00021	12/13	Z2N	Z2E	51.5	RMCS7492 0100 0513
BOWSER	00023	12	Z2N	Z2E	51.5	RMCS7493 0100 0518
BOWSER	021-A	12/13	Z2N	Z2E	51.5	RMCS7494 0100 0521
BOWSER	021-A	12	Z2N	Z2E	51.5	RMCS7495 0100 0522
BOWSER	021-A	12	Z2N	Z2E	51.5	RMCS7496 0100 0523
BOWSER	021-A	12	Z2N	Z2E	51.5	RMCS7497 0100 0524
BOWSER	00027	1	Z2N	Z2E	51E	RMCS7498 0100 0525
BOWSER	027-A	12	Z2N	Z2E	51.5	RMCS7499 0100 0527
BOWSER	027-A	1	Z2N	Z2E	51E	RMCS7500 0100 0528
BOWSER	00029	12	Z2N	Z2E	51.5	RMCS7501 0100 0530
BOWSER	00029	1	Z2N	Z2E	51E	RMCS7502 0100 0531
BOWSER	029-A	1	Z2N	Z2E	51E	RMCS7503 0100 0533
BOWSER	00031	12	Z2N	Z2E	51E	RMCS7504 0100 0534
BOWSER	00031	1	Z2N	Z2E	51.5	RMCS7505 0100 0536
BOWSER	001-A	1	Z2N	Z2E	51E	RMCS7506 0100 0537
BOWSER	001-A	1	Z2N	Z2E	51E	RMCS7507 0100 0538
BOWSER	00033	1	Z2N	Z2E	51E	RMCS7508 0100 0539
BOWSER	033-A	1	Z2N	Z2E	51E	RMCS7509 0100 0540
BOWSER	00035	1	Z2N	Z2E	51E	RMCS7510 0100 0541
BOWSER	035-A	1	Z2N	Z2E	51E	RMCS7511 0100 0542
BOWSER	00037	1	Z2N	Z2E	51E	RMCS7512 0100 0543
BOWSER	037-A	1	Z2N	Z2E	51E	RMCS7513 0100 0544
BOWSER	00061	1.2	Z2N	Z2E	51E	RMCS7514 0100 0560
BOWSER	00062	1.2	Z2N	Z2E	51E	RMCS7515 0100 0561
BOWSER	00063	1	Z2N	Z2E	51E	RMCS7516 0100 0562
BOWSER	00064	1	Z2N	Z2E	51E	RMCS7517 0100 0563
BOWSER	00065	1	Z2N	Z2E	51E	RMCS7518 0100 0564

BOOK 271 PAGE 212

BOOK 27 | PAGE 2 | 3

CLAIM	NO.	ACRE.	TWP.	RANGE.	BLK. NCR.	BOOK/PAGE
HOWSER	00066	1	22N	51E	NMC97535	0100 0565
HOWSER	00067	1	22N	51E	NMC97536	0100 0566
HOWSER	00068	1	22N	51E	NMC97537	0100 0567
HOWSER	00069	1	22N	51E	NMC97538	0100 0568
HOWSER	00070	1	22N	51E	NMC97539	0100 0569
HOWSER	00073	1.2*	22N	51E	NMC97542	0100 0572
HOWSER	00074	1.2*	22N	51E	NMC97543	0100 0573
HOWSER	00075	1	22N	51E	NMC97544	0100 0574
HOWSER	00076	1.11*	22N	51E	NMC97545	0100 0575
HOWSER	00076	12	22N	51E	NMC97573	0100 0578
HOWSER	00005	12	22N	51E	NMC97575	0100 0580
HOWSER	00007	12	22N	51E	NMC97577	0100 0582
HOWSER	00009	12	22N	51E	NMC97579	0100 0584
HOWSER	00038	7	22N	52E	NMC94138	0153 0496
HOP	00048	7.18	22N	52E	NMC230641	0100 0475
HOWSER	00011	12	22N	51E	NMC97581	0100 0586
HOWSER	00013	12	22N	51E	NMC97583	0100 0588
HOWSER	00015	12	22N	51E	NMC97585	0100 0590
HOWSER	00017	12	22N	51E	NMC97587	0100 0592
HOWSER	00019	11.12*	22N	51E	NMC97589	0100 0594
HOWSER	00021	12.12*	22N	51E	NMC97591	0100 0596
HOWSER	00023	11*	22N	51E	NMC97593	0100 0598
HOWSER	00025	12	22N	51E	NMC97595	0100 0600
HOWSER	00027	13	22N	51.5	NMC97597	0101 0002
HOWSER	00027	12	22N	51E	NMC97599	0101 0004
HOWSER	00031	13	22N	51.5	NMC97601	0101 0006
HOWSER	00033	13	22N	51.5	NMC97603	0101 0008
HOWSER	00035	13.24	22N	51.5	NMC97605	0101 0010
HOWSER	00037	12.24	22N	51.5	NMC97607	0101 0012
HOWSER	00037	18	22N	52E	NMC97609	0101 0014
HOWSER	00039	13.24	22N	51.5	NMC97609	0101 0014
HOWSER	00039	18.24	22N	52E	NMC97611	0101 0016
HOWSER	00041	18.19	22N	52E	NMC97611	0101 0016
HOWSER	00043	18	22N	52E	NMC97613	0101 0018
HOWSER	00045	18.19	22N	52E	NMC97615	0101 0020
HOWSER	00070	13	22N	51.5E	NMC97640	0101 0045
HOWSER	00071	13	22N	51.5E	NMC97641	0101 0046

MOUNT HOPE MINES, INC.
MINING CLAIMS EXHIBITS

CLAIM NAME ACRES TWP. RGE. SEC. 34 35 36 37 38 39 40

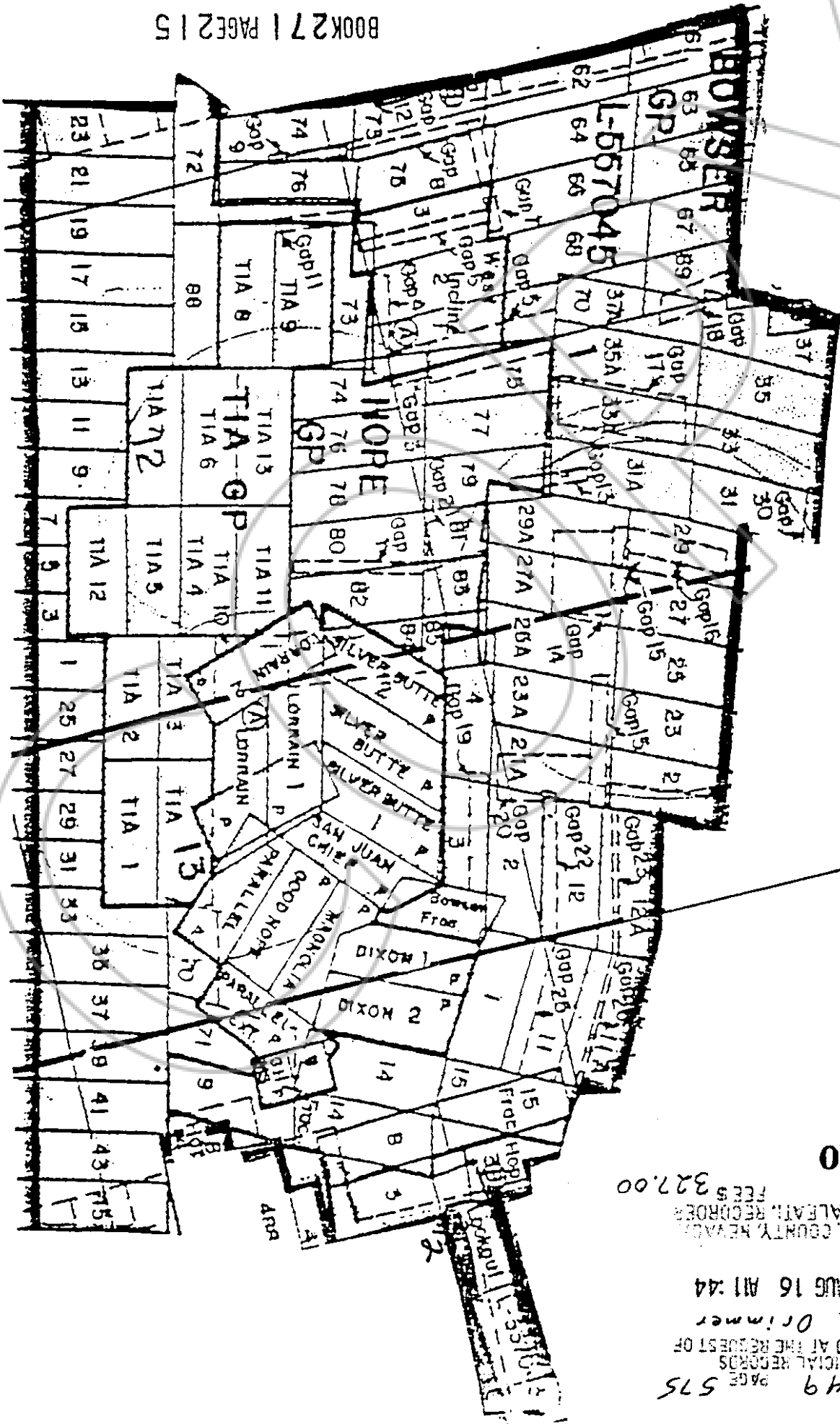
CLAIM NAME	ACRES	TWP.	RGE.	SEC.	34	35	36	37	38	39	40
HOPE	00072	11.12*	Z2N	S1E							
HOPE	00073	1.12	Z2N	S1E							
HOPE	00074	1.12	Z2N	S1E							
HOPE	00075	1.1	Z2N	S1E							
HOPE	00076	1.12	Z2N	S1E							
HOPE	00077	1	Z2N	S1E							
HOPE	00078	1.12	Z2N	S1E							
HOPE	00079	1	Z2N	S1E							
HOPE	00080	1.12	Z2N	S1E							
HOPE	00081	1	Z2N	S1E							
HOPE	00082	12	Z2N	S1E							
HOPE	00083	1.12	Z2N	S1E							
HOPE	00084	12	Z2N	S1E							
HOPE	00084	13	Z2N	S1.5							
HOPE	00085	1.12	Z2N	S1E							
HOPE	00085	12.12	Z2N	S1.5							
HOPE	00088	12.12	Z2N	S1E							
WEST INCLINE	00001	1.12	Z2N	S1E							
WEST INCLINE	00002	1.12	Z2N	S1E							
WEST INCLINE	00003	1.12	Z2N	S1E							
TIA	00000	13	Z2N	S1.5							
TIA	00001	13	Z2N	S1.5							
TIA	00002	13	Z2N	S1.5							
TIA	00002	12	Z2N	S1E							
TIA	00003	13	Z2N	S1.5							
TIA	00003	12	Z2N	S1E							
TIA	00004	12	Z2N	S1E							
TIA	00005	12	Z2N	S1E							
TIA	00006	12	Z2N	S1E							
TIA	00007	12	Z2N	S1E							
TIA	00008	12	Z2N	S1E							
TIA	00009	12	Z2N	S1E							
TIA	00010	12	Z2N	S1E							
TIA	00011	12	Z2N	S1E							
TIA	00012	12	Z2N	S1E							
TIA	00013	12	Z2N	S1E							
LOOKOUT	00001	18	Z2N	S2E							
LOOKOUT	00002	18	Z2N	S2E							
LOOKOUT	00003	18	Z2N	S2E							

* = proposed
CP = Cont'd. (on map)

BOOK 27 | PAGE 214

EXHIBIT "B" : MAP OF CLAIM BLOCK REV. 8/93

R. 51 1/2 E



BOOK 271 PAGE 215

BOOK 249 PAGE 575
 OFFICIAL RECORDS
 RECORDED AT THE REQUEST OF
 Harold Orimmer
 93 AUG 16 AM 11:44
 EUREKA COUNTY REVALUATION
 M. N. REBALANCE RECORDS
 FILE NO. FEES \$327.00
 146110

BOOK 271 PAGE 216

153640
EUREKA COUNTY RECORDS
M.N. REBATE FEE \$ 38/50
FILE NO.

BOOK 271 PAGE 211
OFFICIAL RECORDS
RECORDED AT THE REQUEST OF
Harold & Minnie
JUL 13 P1:55 '94

COPY