

R 49 E

5,050' North and 2,850' West  
projection to unsurveyed SW 1/4  
Section 31, T28N, R49E

Projection of unsurveyed  
Section Corner

7/8  
18/17

4,500'

T 27 N

2,400'

4

11

12

3

9

10

2

7

8

1

5

6

Buckaroo  
354

Buckaroo  
224

4,500'

3,600'

(Rough Projection)

TO NW COR. RHY 62

4,500'

NOTES:

All location monuments are 2"x2"x4' wood posts.  
Claim corners are 2"x2"x4' wood posts, unless shown as  
4"x4"x4.5' wood posts.

EXPLANATION:

- o Location Monument
- 4"x4"x4.5' wood post

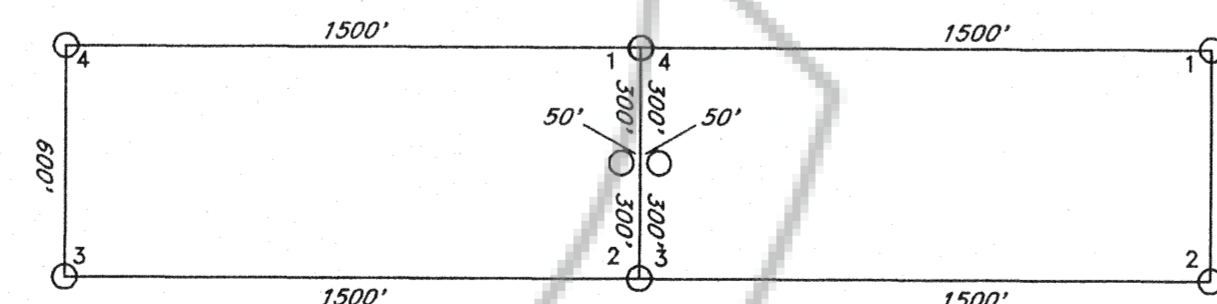
Part of Pre-Existing Claim Block

Buckaroo  
224

LOCATION DATES:

April 21, 1994 JAB 1-12

TYPICAL CLAIMS:



FILED AT THE REQUEST OF *Pathfinder Exploration*  
on July 20, 1994, at 37 mins. past 7A M.  
RECORDS OF EUREKA COUNTY, NEVADA M. N. REBALEATI, Recorder  
File No. 153698 Fee \$ 120.00

SURVEY BY:  
BOB CLINE  
P.O. Box 1696  
Minden, Nevada 89423

PATHFINDER EXPLORATION CORP.  
Eureka Co., Nevada

JAB LODE MINING CLAIMS  
T27N, R49E

0 500 1000 1500  
Feet

April 21, 1994 Drawn by: G. H.

153698