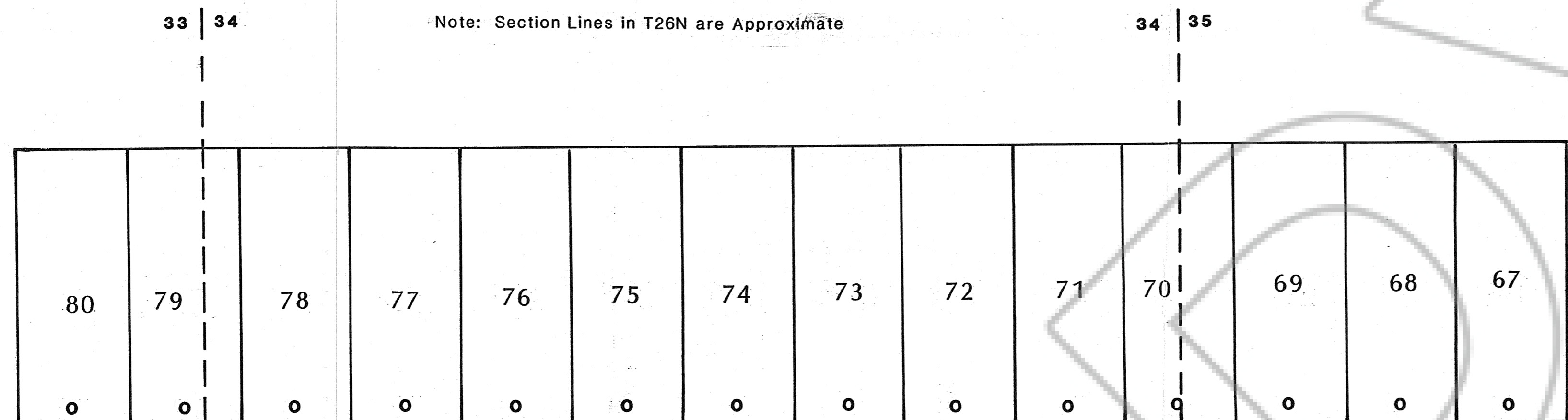


LOCATOR: DAVID R. SHADDRICK, AGENT FOR
RUBICON RESOURCES INC.
P. O. BOX 4940, SPARKS, NEVADA 89432

LOCATION: Sections 33, 34, 35
T26N R48E EUREKA COUNTY, NEVADA

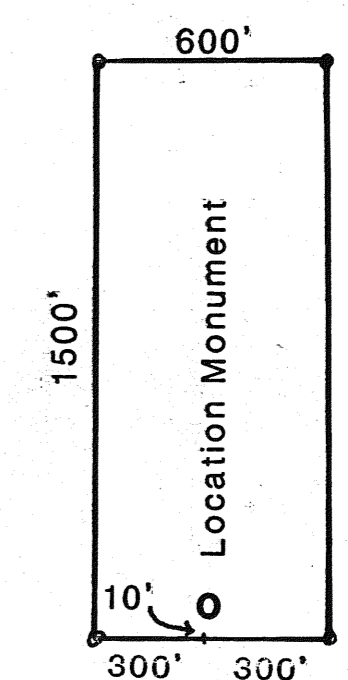


TIE: The SE Corner of GT 67
is 600 feet due West of the North
corner of Sections 1 and 2 T25N R48E

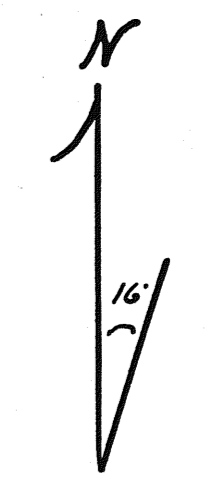
T26N

T25N

Typical Claim



LOCATED May 15, 1994



GT 67 - 80 LODE MINING CLAIMS

RUBICON RESOURCES INC.

Scale 1" = 500' 5/15/94

FILED AT THE REQUEST OF *Rubicon Resources*
on *July 27* 19*94*, at *31* mins, past *12* M.
RECORDS OF EUREKA COUNTY, NEVADA M. N. REBALEATI, Recorder
File No. **153717** Fee \$ *2.00*