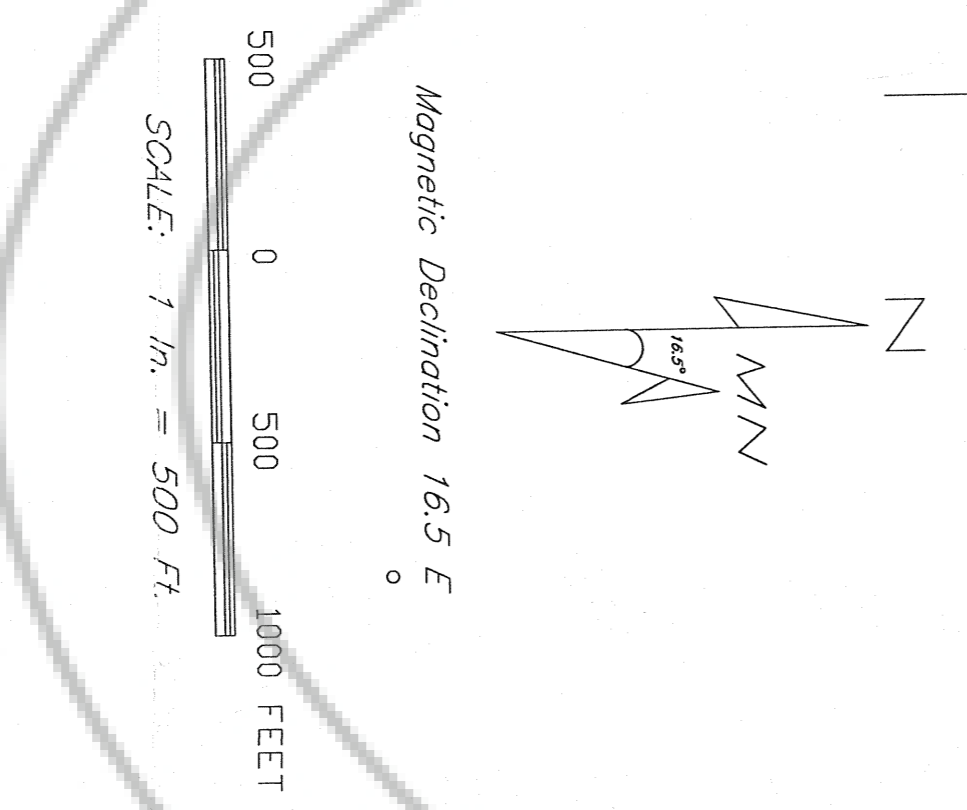
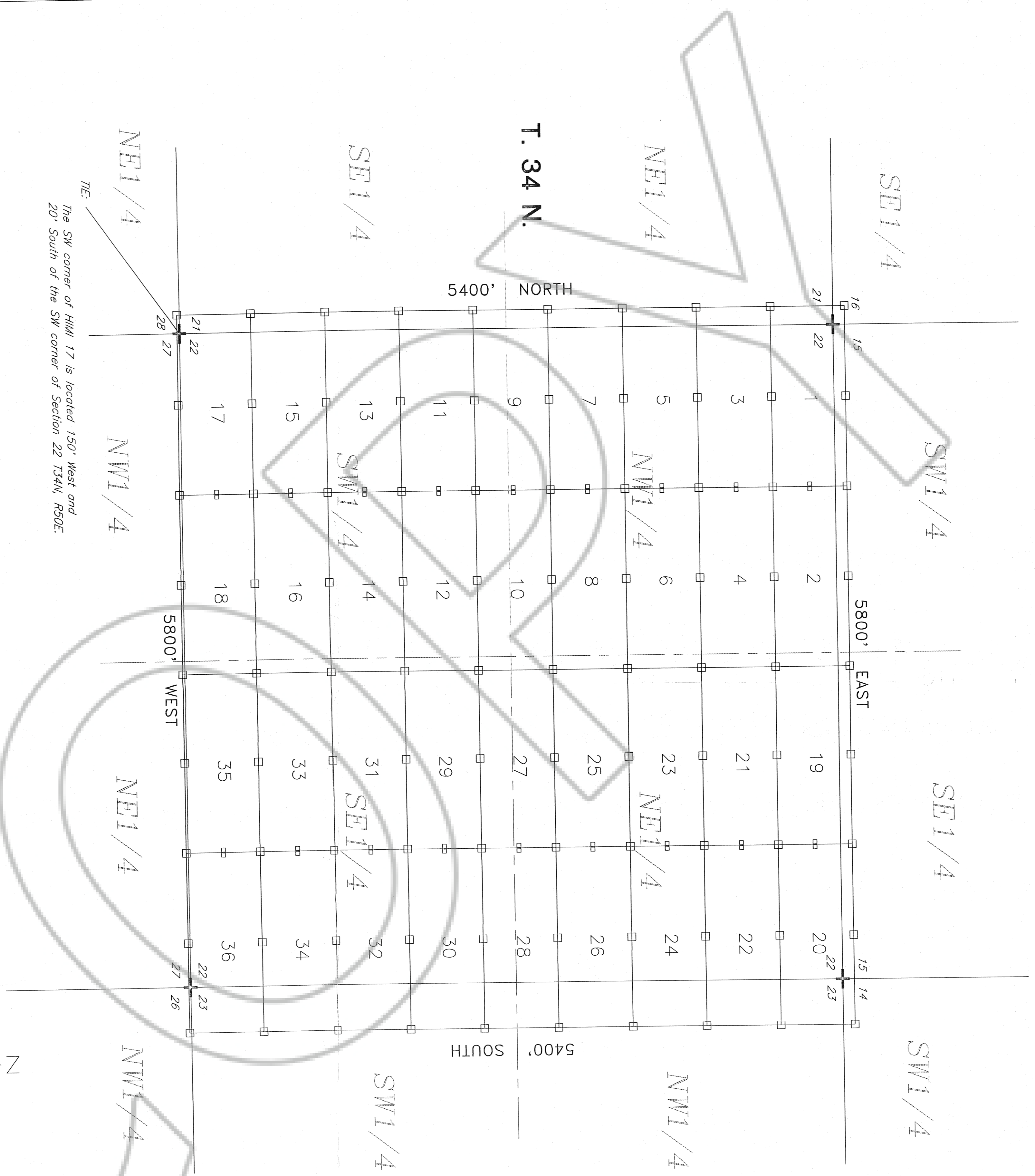


R. 50 E.

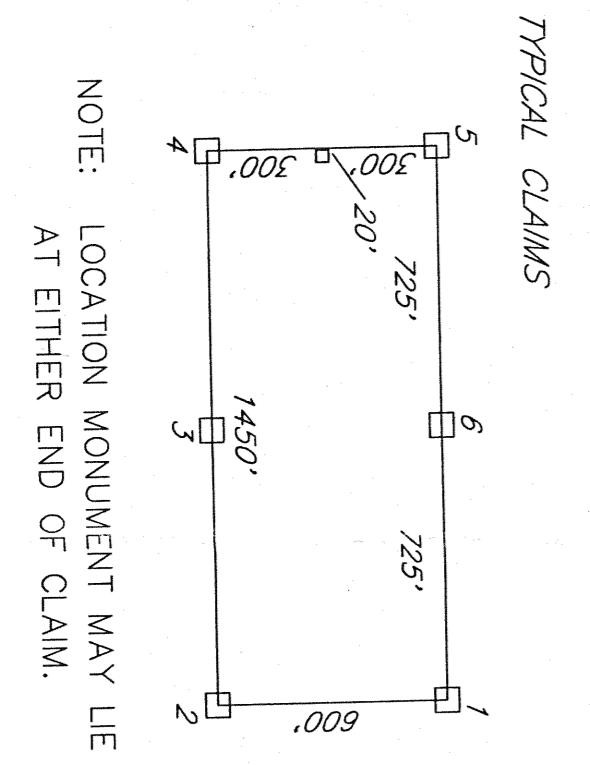


LOCATOR:
 NEWMONT EXPLORATION LIMITED
 555 FIFTH STREET
 ELKO, NEVADA 89801

LOCATION:
 Sections 14-16, 21-23, 26-28, T34N, R50E
 Mount Diablo Meridian
 Eureka County, Nevada

LOCATION DATES:
 HIMI 1-18
 October 25, 1992
 HIMI 19-36
 October 26, 1992

TIE POINT:
 The SW corner of HIMI 17 is located 150' West and
 20' South of the SW corner of Section 22 T34N, R50E.



All claims are 1450' x 600'.
 Location Monuments are 20' from end line of claim.
 Location Monument - 4"x4"x4' Wood Post
 Corner or Side Center Monument - 4"x4"x4' Wood Post
 Found Section Corner

STATEMENT BY NEWMONT EXPLORATION LIMITED
 THIS AMENDED MAP HAS BEEN PREPARED AND IS
 RECORDED TO RESTATE THE ACTUAL LOCATION OF THOSE
 CERTAIN HIMI 1-36 LODGE MINING CLAIMS. THE ORIGINAL
 MAP OF WHICH WAS RECORDED ON JANUARY 14, 1993
 AS FILE NUMBER 143826 IN THE OFFICIAL RECORDS OF
 EUREKA COUNTY, NEVADA. THIS MAP DEPICTS THE LOCATION
 OF THE CLAIMS AS ORIGINALLY LOCATED AND IN NO MANNER
 CHANGES THE POSITION OF SUCH CLAIMS ON THE GROUND.

FILED AT THE REQUEST OF *Neumont Exploration*
 on *July 22 19 94* at *4:17* mins, PM, *ELKO*
 in the *EUREKA COUNTY, NEVADA* M. N. RECORDS
 File No. *244050* Fee \$ *1.00*

AMENDED CLAIM MAP
 HIMI 1-36
 LODGE MINING CLAIMS
 WITHIN
 T. 34 N., R. 50 E. M.D.M.
 EUREKA COUNTY, NEVADA
 NEWMONT EXPLORATION LIMITED