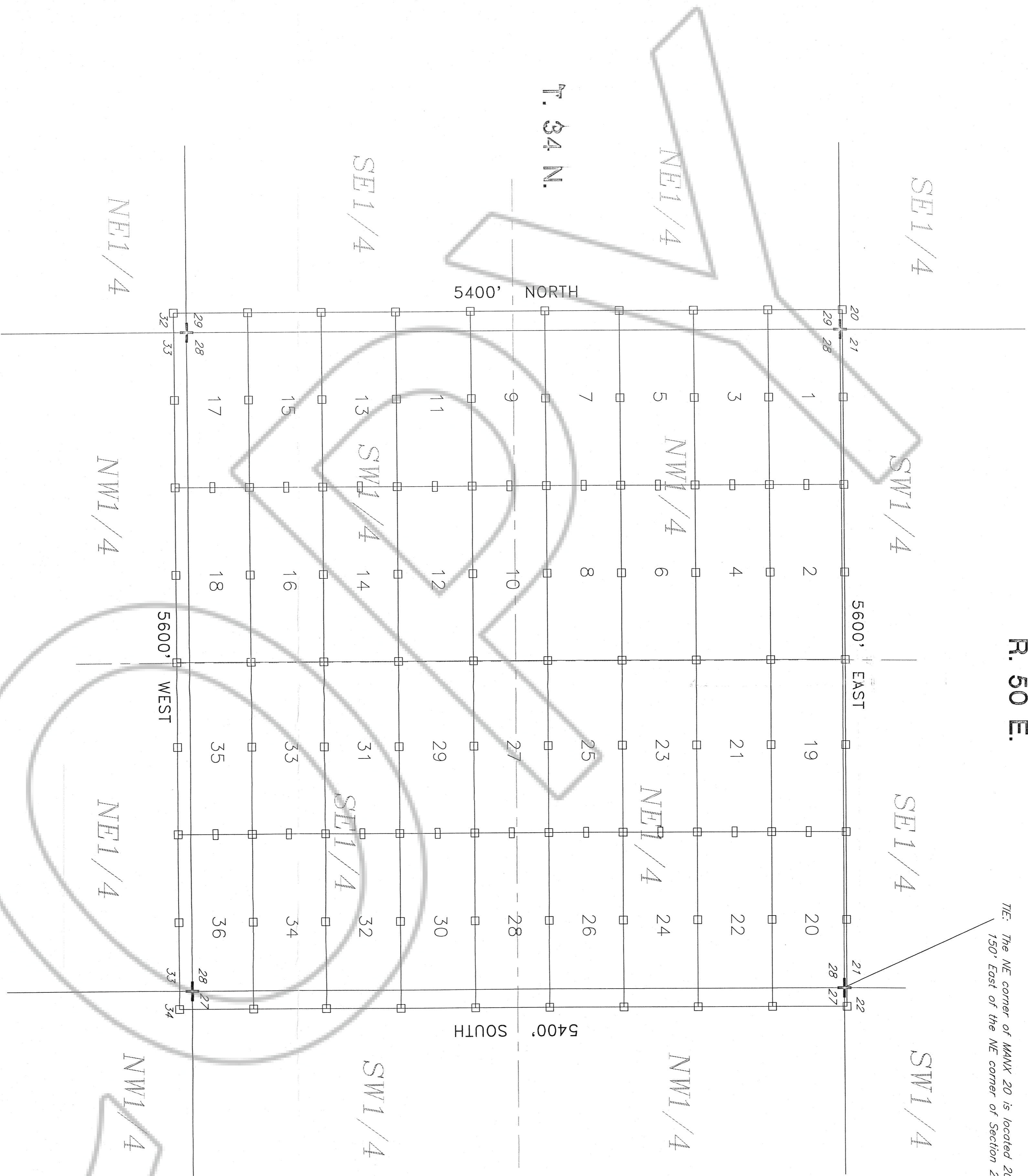


R. 50 E.

THE NE corner of MANYX 20 is located 20' North and 150' East of the NE corner of Section 28 T34N, R50E.



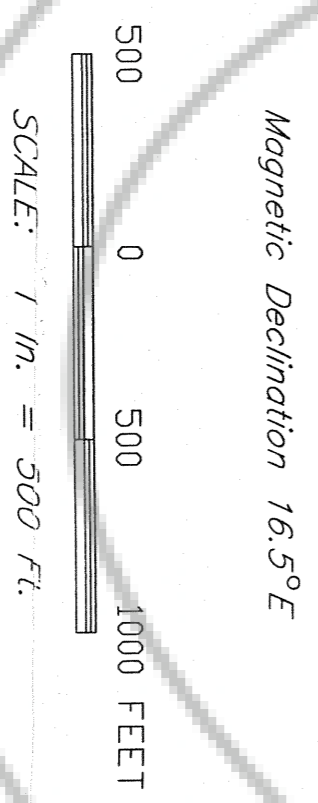
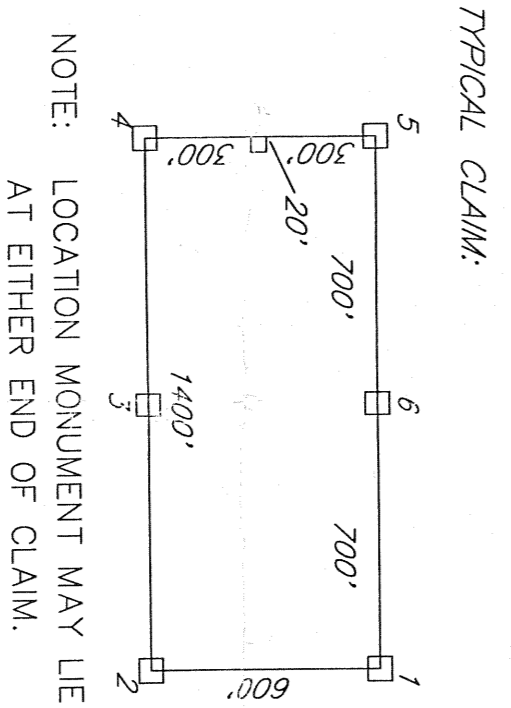
LOCATOR:
NEWMONT EXPLORATION LIMITED
555 FIFTH STREET
ELKO, NEVADA 89801

LOCATION:
Section 28 T34N, R50E
Mount Diablo Meridian
Eureka County, Nevada

LOCATION DATES:
October 25, 1992 MANYX 19-36
October 26, 1992 MANYX 1-18

THE POINT:
The NE corner of MANYX 20 is located 20' North and 150' East of the NE corner of Section 28 T34N, R50E.

- All claims are 1400' x 600'.
- Location Monuments are 20' from end line of claim.
- Location Monument - 4"x4"x4' Wood Post
- Corner or Side Center Monument - 4"x4"x4' Wood Post
- Found Section Corner



STATEMENT BY NEWMONT EXPLORATION LIMITED

THIS AMENDED MAP HAS BEEN PREPARED AND IS RECORDED TO RESTATE THE ACTUAL LOCATION OF THOSE CERTAIN MANYX 1-36 LODE MINING CLAIMS. THE ORIGINAL MAP OF WHICH WAS RECORDED ON JANUARY 13, 1993 AS FILE NUMBER 143620 IN THE OFFICIAL RECORDS OF EUREKA COUNTY, NEVADA. THIS MAP DEPICTS THE LOCATION OF THE CLAIMS AS ORIGINALLY LOCATED AND IN NO MANNER CHANGES THE POSITION OF SUCH CLAIMS ON THE GROUND.

Witness: *Neumont Exploration*
Sheldon Gully 26 7/94 Min 00 Trm 9A
M. W. Edwards - Recorder
File # 154087 Fee 200

AMENDED CLAIM MAP
MANYX 1-36
LODE MINING CLAIMS
WITHIN
T. 34 N., R. 50 E. M.D.M.
EUREKA COUNTY, NEVADA
NEWMONT EXPLORATION LIMITED