

TIE:
The NE corner of SETR 17 is located 10' East and
20' North of the NE corner of Section 36 T35N, R50E.

LOCATOR:
NEWMONT EXPLORATION LIMITED
555 FIFTH STREET
ELKO, NEVADA 89801

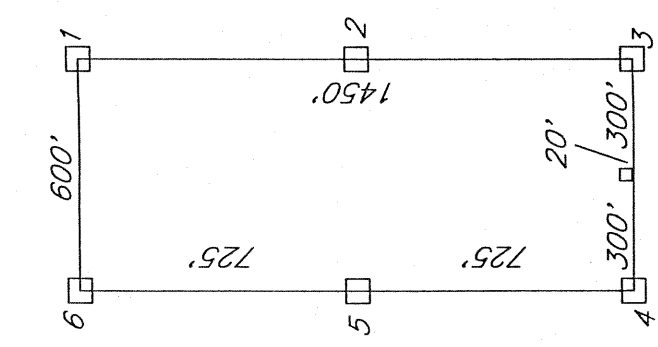
LOCATION:
Section 2 T34N, R50E
Section 6 T34N, R51E
Section 36 T35N, R50E
Mount Diablo Meridian
Eureka County, Nevada

LOCATION DATES:
November 6, 1992 SETR 37-54
November 7, 1992 SETR 1-36, 55-82

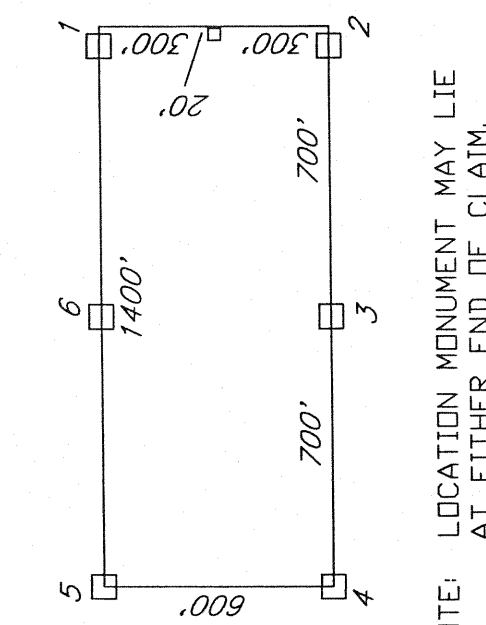
TIE POINT:
The NE corner of SETR 17 is located 10' East and
20' North of the NE corner of Section 36 T35N, R50E.

All claims are 1450' x 600' except where noted.
Location Monuments are 20' from end line of claim.
□ Location Monument - 4"x4"x4' Wood Post
□ Corner or Side Center Monument - 4"x4"x4' Wood Post
+ Found Section Corner

TYPICAL CLAIM:



NOTE: LOCATION MONUMENT MAY LIE
AT EITHER END OF CLAIM.



STATEMENT BY NEWMONT EXPLORATION LIMITED

THIS AMENDED MAP HAS BEEN PREPARED AND IS
RECORDED TO RESTATE THE ACTUAL LOCATION OF THOSE
CERTAIN SETR 1-82 LODE MINING CLAIMS, THE ORIGINAL
MAP OF WHICH WAS RECORDED ON FEBRUARY 2, 1993
AS FILE NUMBER 144233 IN THE OFFICIAL RECORDS OF
EUREKA COUNTY, NEVADA. THIS MAP DEPICTS THE LOCATION
OF THE CLAIMS AS ORIGINALLY LOCATED AND IN NO MANNER
CHANGES THE POSITION OF SUCH CLAIMS ON THE GROUND.

FILED AT THE REQUEST OF Newmont Exploration
on July 22 1992 at 5:23 P.M. Book 90, p.
RECORDS OF EUREKA COUNTY, NEVADA. M. N. REUBEN, Recorder
File No. 15-4770 Fee \$ 200

AMENDED CLAIM MAP
SETR 1-82
LODE MINING CLAIMS
WITHIN
T. 34-35 N., R. 50-51 E. M.D.M.
EUREKA COUNTY, NEVADA
NEWMONT EXPLORATION LIMITED