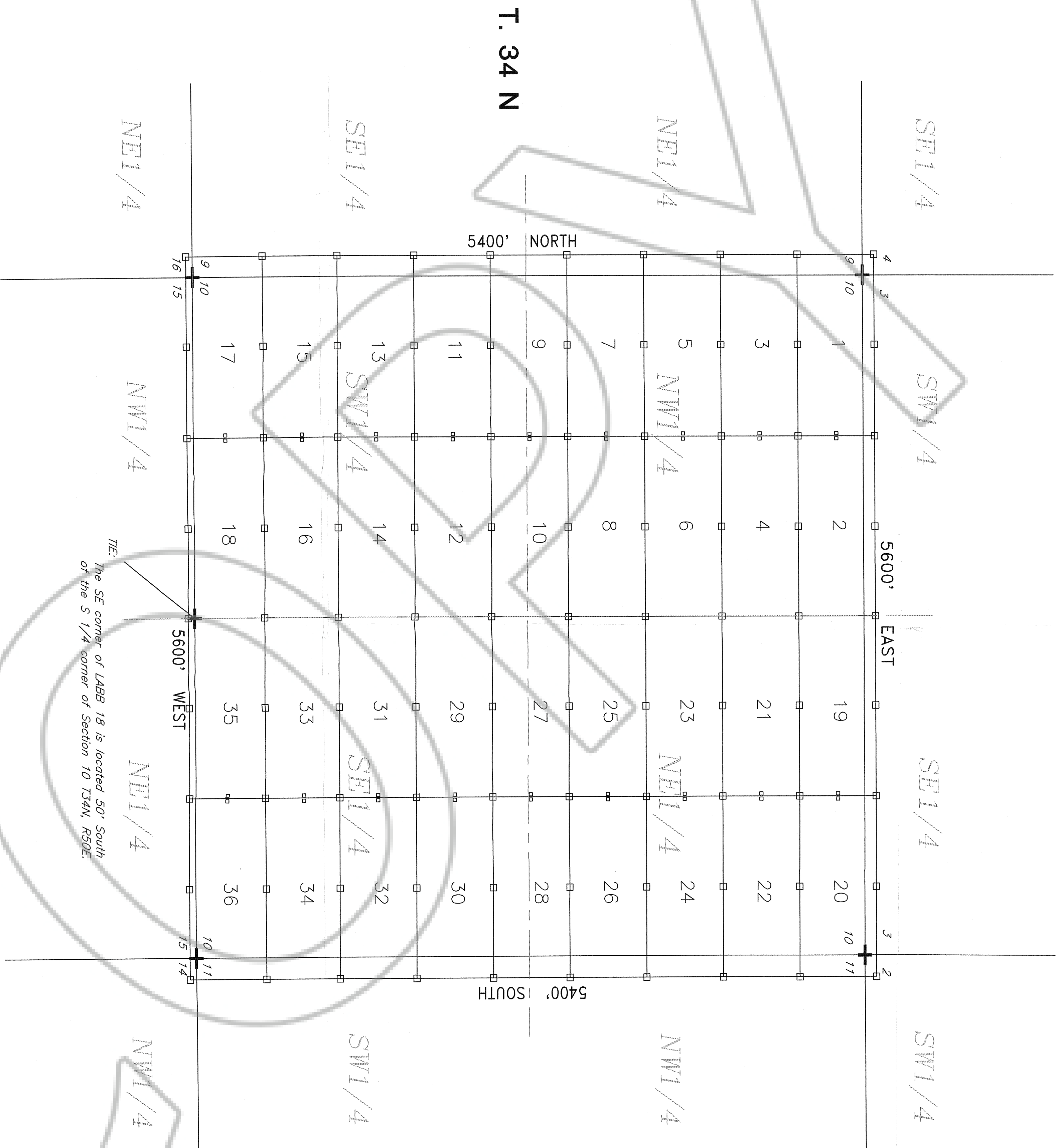


R. 50 E.



LOCATOR:
NEWMONT EXPLORATION LIMITED
555 FIFTH STREET
ELKO, NEVADA 89801

LOCATION:
Section 10 T34N, R50E
Mount Diablo Meridian
Eureka County, Nevada

LOCATION DATE: LABB 1-36
November 6, 1992

THE POINT:
The SE corner of LABB 18 is located 50' South
of the S 1/4 corner of Section 10 T34N, R50E.

All claims are 1400' x 600'.
Location Monuments are 20' from end line of claim.
Location Monument - 4"x4"x4' Wood Post
Corner or Side Center Monument - 4"x4"x4' Wood Post
+ Found Section Corner or 1/4 Corner

STATEMENT BY NEWMONT EXPLORATION LIMITED
THIS AMENDED MAP HAS BEEN PREPARED AND IS
RECORDED TO RESTATE THE ACTUAL LOCATION OF THOSE
CERTAIN LABB 1-36 LODGE MINING CLAIMS. THE ORIGINAL
MAP OF WHICH WAS RECORDED ON FEBRUARY 2, 1993
AS FILE NUMBER 144289 IN THE OFFICIAL RECORDS OF
EUREKA COUNTY, NEVADA. THIS MAP DENOTES THE LOCATION
OF THE CLAIMS AS ORIGINALLY LOCATED AND IN NO MANNER
CHANGES THE POSITION OF SUCH CLAIMS ON THE GROUND.

FILED AT THE REQUEST OF: *Neumont Exploration*
JULY 24 1992
RECORDS OF EUREKA COUNTY, NEVADA M.N. REPLENT RECORD
File No. 154244 Fee \$ 7.00

154244

AMENDED CLAIM MAP
LABB 1-36
LODGE MINING CLAIMS
WITHIN
T. 34 N., R. 50 E. M.D.M.
EUREKA COUNTY, NEVADA
NEWMONT EXPLORATION LIMITED