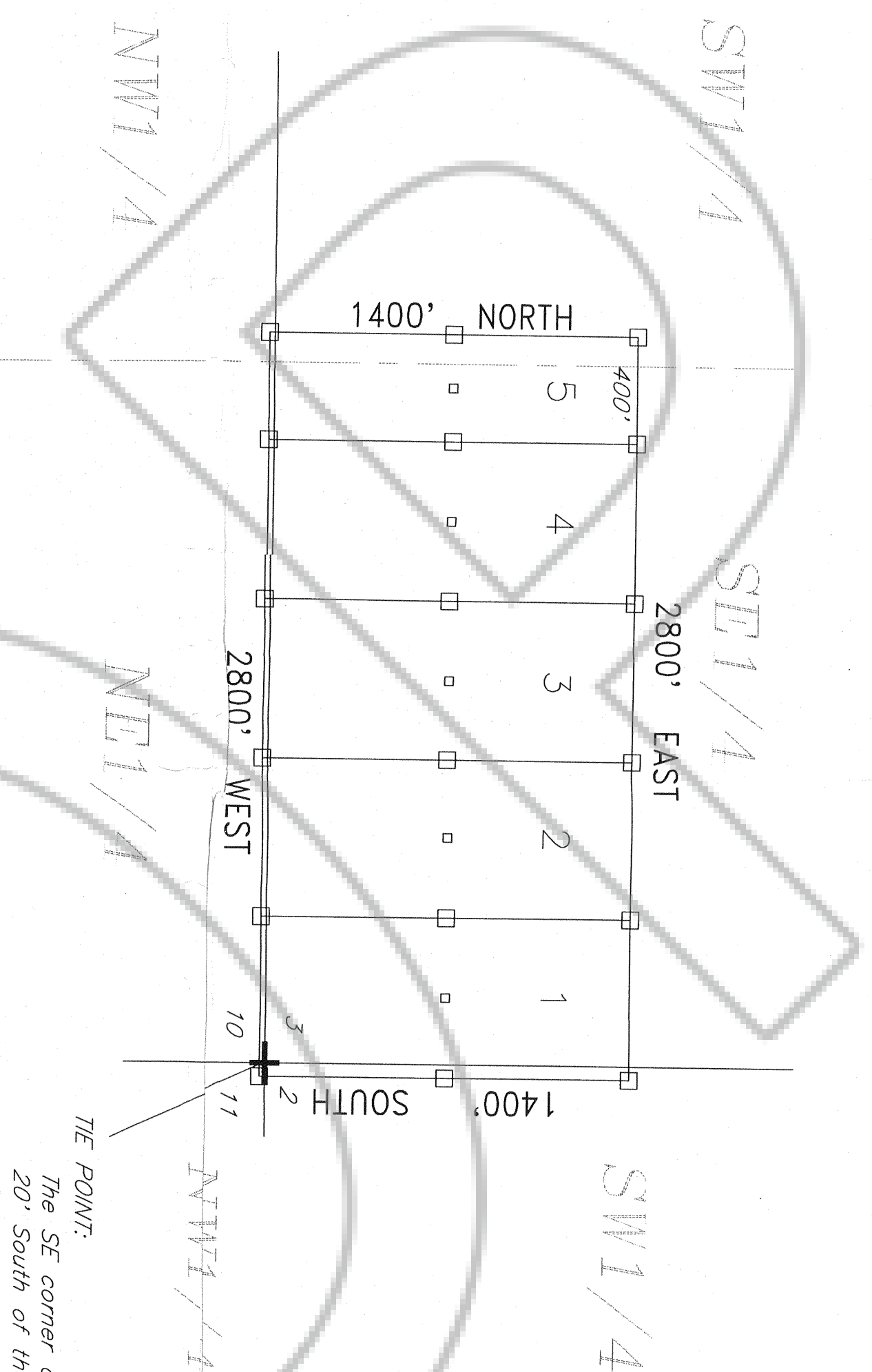
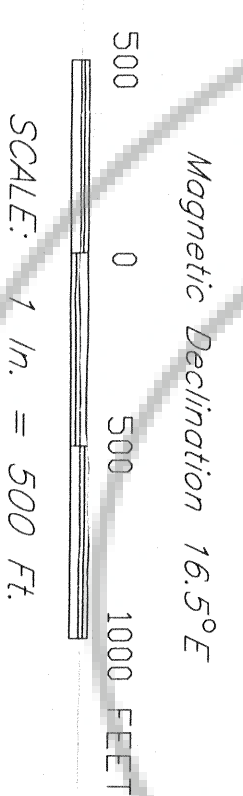
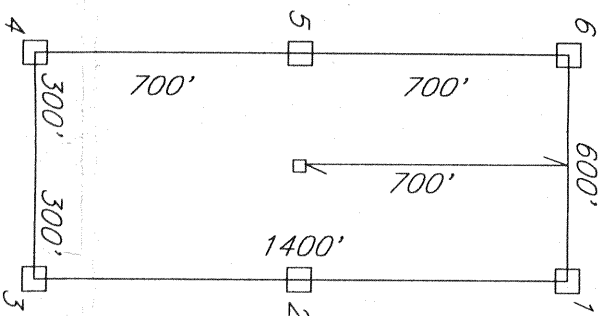


R. 50 E.

T. 34 N.



TYPICAL CLAIMS



LOCATOR:

NEWMONT EXPLORATION LIMITED
555 FIFTH STREET
ELKO, NEVADA 89801

LOCATION:

Section 3 T34N, R50E
Mount Diablo Meridian
Eureka County, Nevada

LOCATION DATE:

November 10, 1992 AFGN 1-5

TIE POINT:

The SE corner of AFGN 1 is located 50' East and
20' South of the SE corner of Section 3 T34N, R50E.

All claims are 1400' x 600' except where noted.

Location Monuments are 700' from end line of claim.

Location Monument - 4"x4"x4' Wood Post

Corner or Side Center Monument - 4"x4"x4' Wood Post

+ Found Section Corner

THIS AMENDED MAP HAS BEEN PREPARED AND IS
RECORDED TO RESTATE THE ACTUAL LOCATION OF THOSE
CERTAIN AFGN 1-5 LODE MINING CLAIMS, THE ORIGINAL
OF WHICH WAS RECORDED ON FEBRUARY 4, 1993, AS FILE
NUMBER 144400 IN THE OFFICIAL RECORDS OF EUREKA
COUNTY, NEVADA. THIS MAP DEPICTS THE LOCATION OF
THE CLAIMS AS ORIGINALLY LOCATED AND IN NO MANNER
CHANGES THE POSITION OF SUCH CLAIMS ON THE GROUND.

FILED AT THE REQUEST OF *Neumont Exploration*
on *July 27, 19 92* at *2:30* mins, east *200* M.
RECORDS EUREKA COUNTY, NEVADA M. N. REBALEATI, Recorder
FILE NO. **154250** Fee \$ **7.00**

AMENDED CLAIM MAP

AFGN 1-5

LODE MINING CLAIMS

WITHIN

T. 34 N., R. 50 E. M.D.M.
EUREKA COUNTY, NEVADA

NEWMONT EXPLORATION LIMITED