

The NW corner of FORD 29 & the NE corner of JEEP 9 are located at the NW corner of Section 1, T35N, R50E M.D.M.

T 36 N

T 35 N

NE1/4

SE1/4

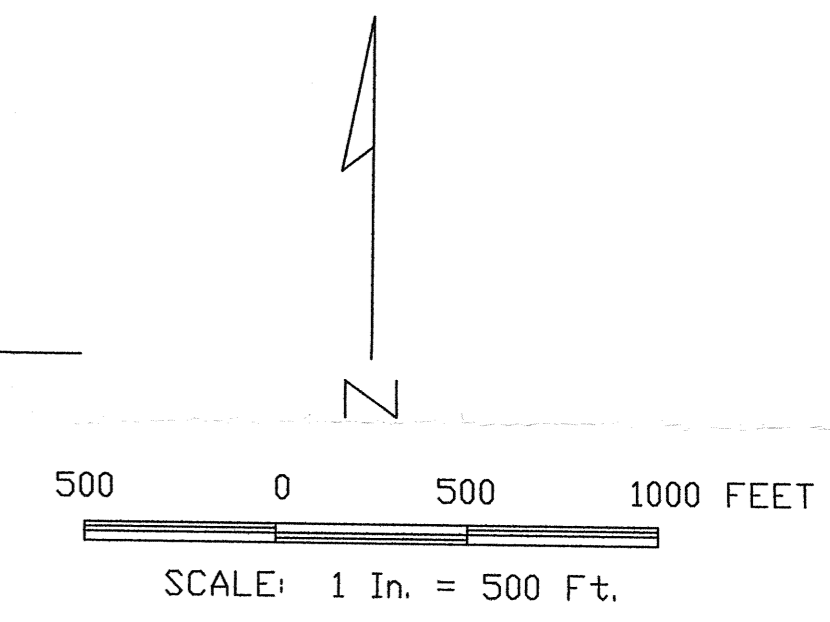
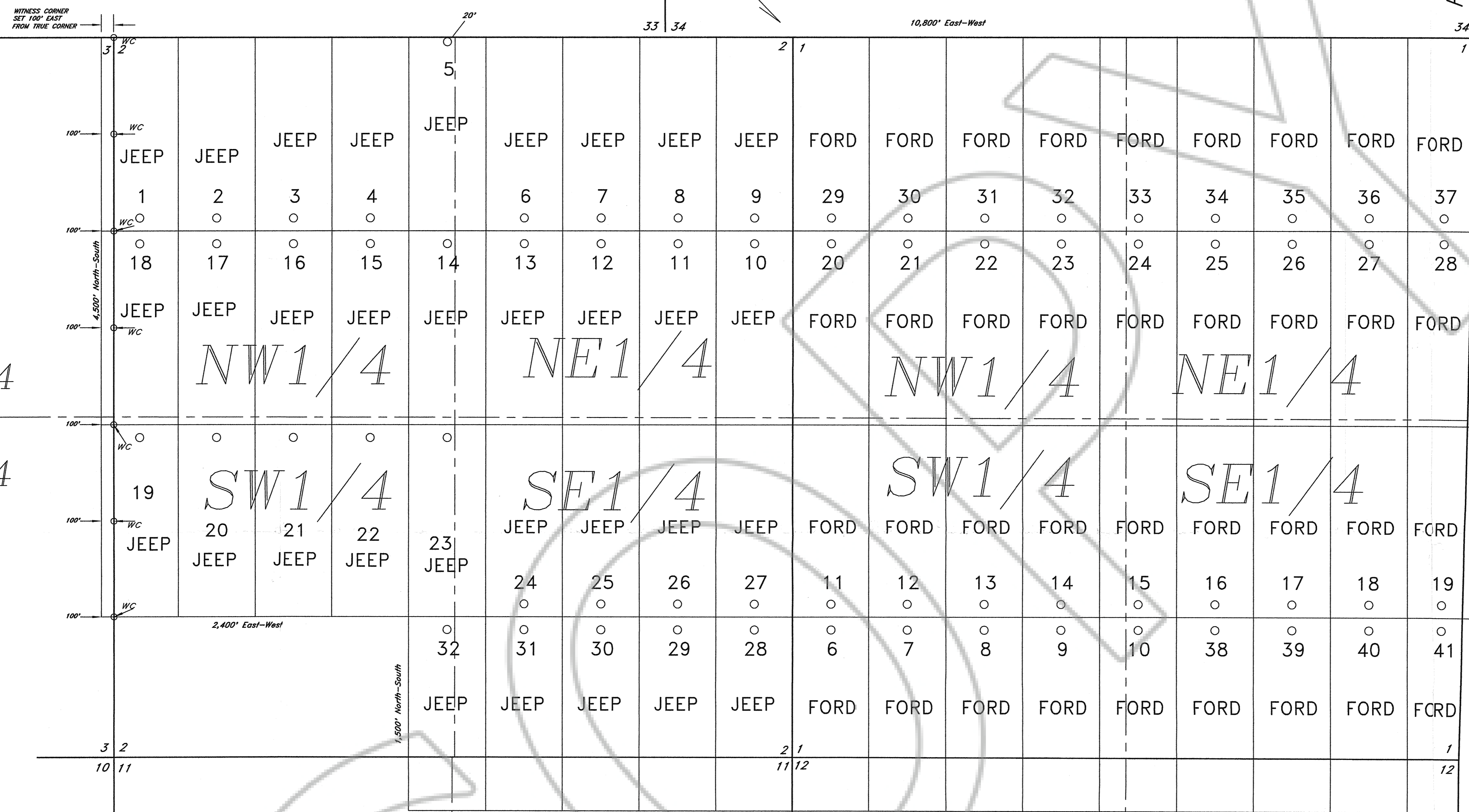
R 50 E  
R 51 E

SW1/4

T 35 N

NW1/4

SW1/4



FILED AT THE REQUEST OF Newmont Exploration  
on July 29 19 92, at 32 mins, past 12 M.  
RECORD OF EUREKA COUNTY, NEVADA M. N. REBALEATI, Recorder  
File No. 154286 Fee \$ 200

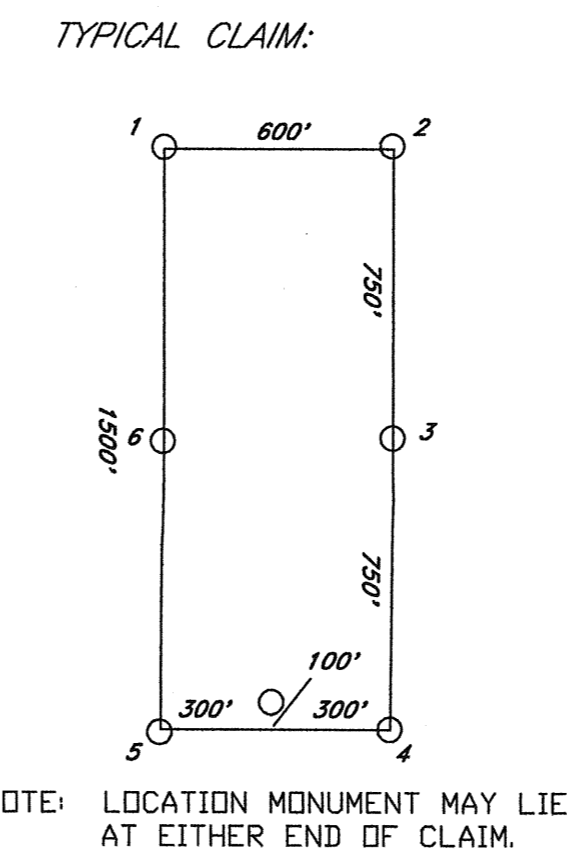
STATEMENT BY NEWMONT EXPLORATION LIMITED  
THIS AMENDED MAP HAS BEEN PREPARED AND IS RECORDED TO RESTATE THE ACTUAL LOCATION OF THOSE CERTAIN JEEP 1-32, FORD 6-41 LODE MINING CLAIMS, THE ORIGINAL MAP OF WHICH WAS RECORDED ON JANUARY 19, 1993, AS FILE NUMBER 143951, IN THE OFFICIAL RECORDS OF EUREKA COUNTY, NEVADA. THIS MAP DEPICTS THE LOCATION OF THE CLAIMS AS ORIGINALLY LOCATED AND IN NO MANNER CHANGES THE POSITION OF SUCH CLAIMS ON THE GROUND.

NOTES:  
All claims measure 1500' x 600'  
All location monuments shown as "O", are set 100' into claim except if noted otherwise.  
All monuments are 4"x4"x4' wood posts.  
WC Witness Corner is set 100' east of true corner or side center

TIE:  
The NW corner of FORD 29 & the NE corner of JEEP 9 are located at the NW corner of Section 1, T35N, R50E M.D.M.

LOCATOR:  
NEWMONT EXPLORATION LIMITED  
555 FIFTH STREET  
ELKO, NEVADA 89801

LOCATION DATES:  
10/24/92 FORD 26-28, 35-37  
10/26/92 JEEP 6-14  
10/27/92 FORD 20-25, 29-34  
JEEP 1-4, 15-32  
10/28/92 FORD 6, 7, 11, 12, 17-19, 39-41  
11/16/92 FORD 8-10, 13-16, 38  
JEEP 5



AMENDED CLAIM MAP  
JEEP 1-32, FORD 6-41  
LODE MINING CLAIMS WITHIN  
T. 35 N., R. 50-51 E. M.D.M.  
EUREKA COUNTY, NEVADA  
NEWMONT EXPLORATION LIMITED

154286