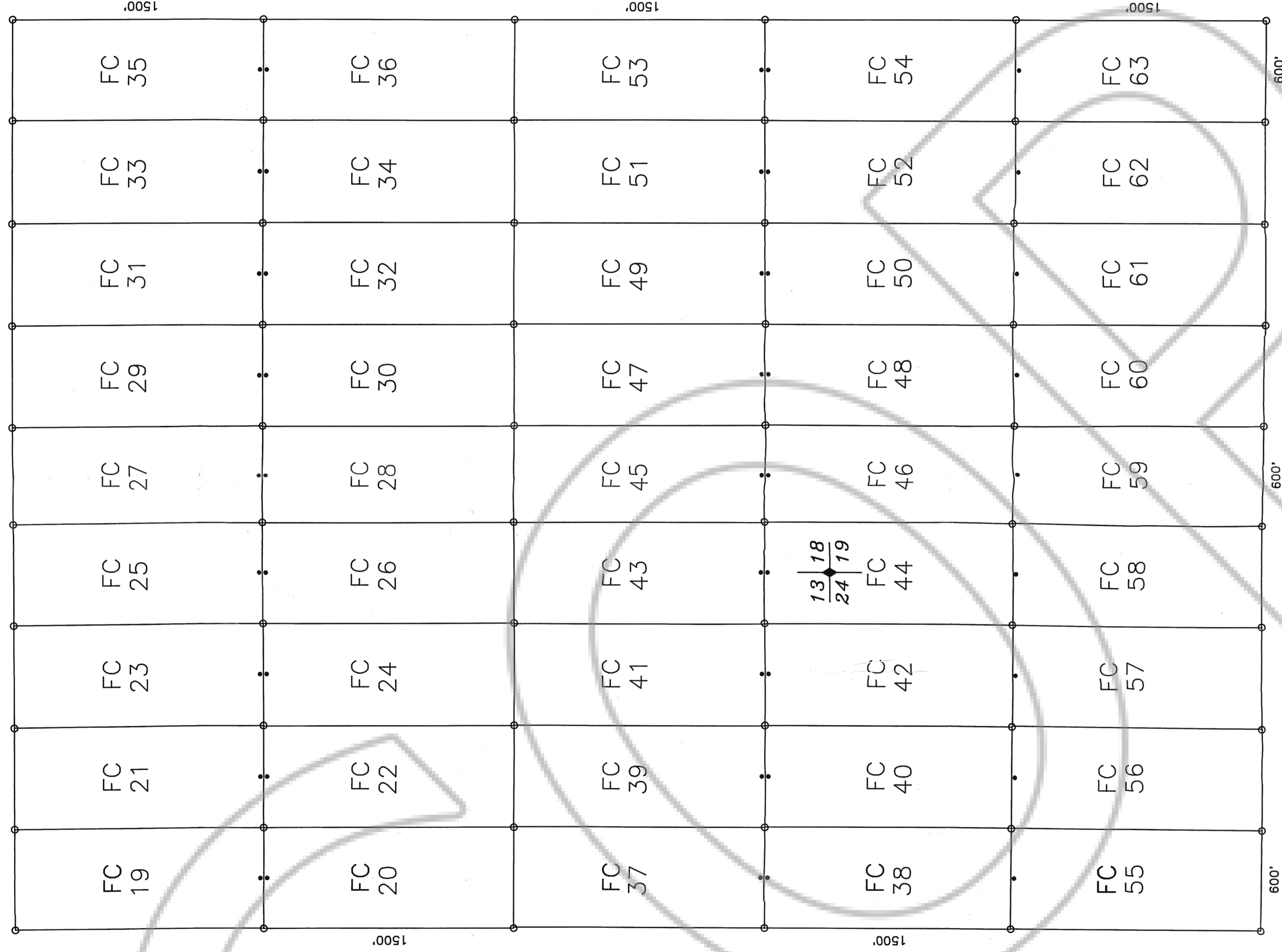


R 52 E R 53 E

12 | 7
13 | 18



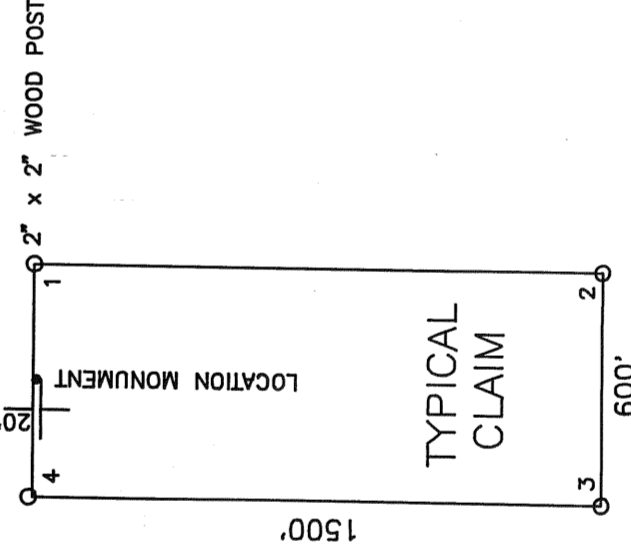
NOTE: NE CORNER FC 63 IS 6390 FEET SOUTH AND 3300 FEET EAST OF SW CORNER 7 T 16 N, R 53 E.

NOTE: ALL FC CLAIMS ARE TIED TO THE SW CORNER SECTION 7 T 16 N, R 53 E.



TRUE NORTH

SCALE 1"=500'
0 500'



COMINCO AMERICAN RESOURCES INCORPORATED
15120 EAST EUCLID AVENUE
SPOKANE, WASHINGTON 99216-1896

LODE CLAIMS FC 19-63
EUREKA COUNTY, NEVADA
SECTIONS: 13,24 T 16 N, R 52 E M.D.B.M.
18,19 T 16 N, R 53 E M.D.B.M.

LOCATED: FC 19-54 MAY 24, 1994
FC 55-63 MAY 25, 1994

PREPARED BY: NORTH AMERICAN EXPLORATION, INC.
472 NORTH MAIN
KAYSVILLE, UTAH 84037