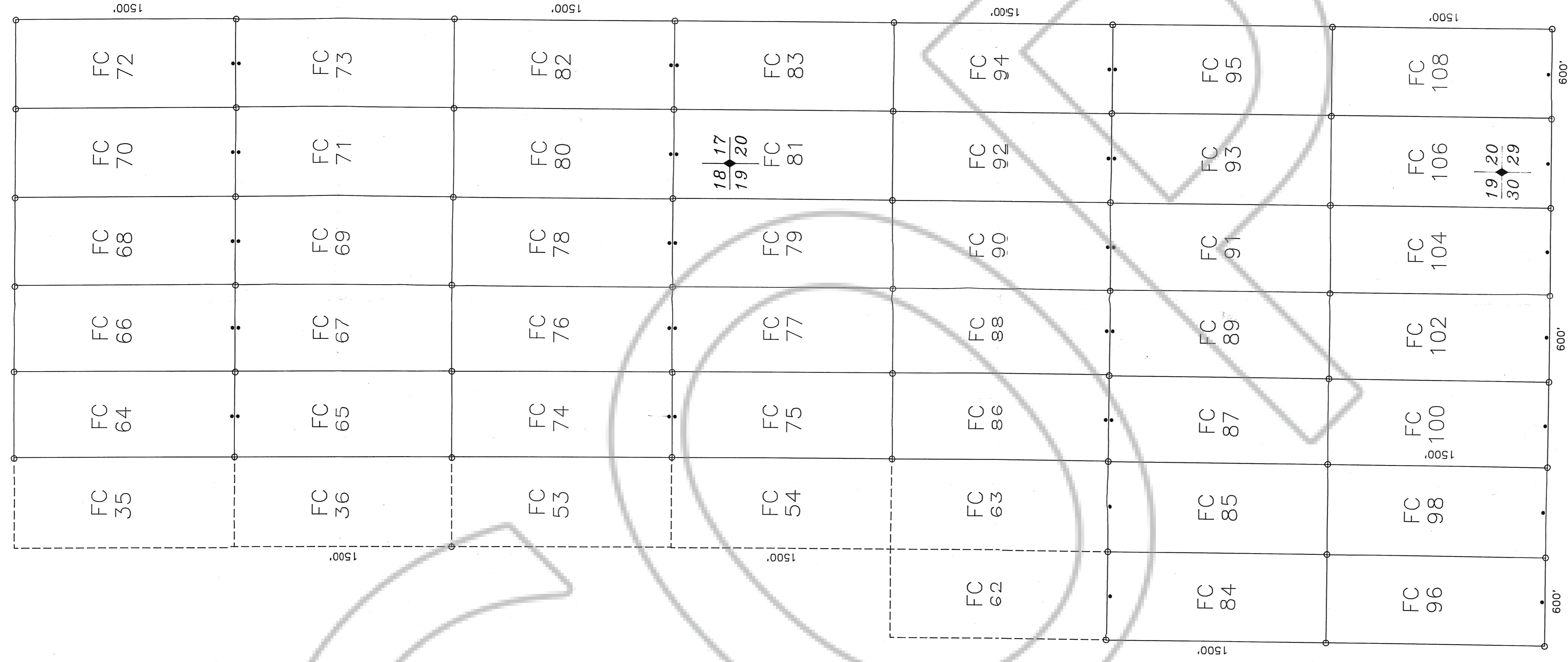


12 7
13 178

FC CLAIM BLOCK ADDITION

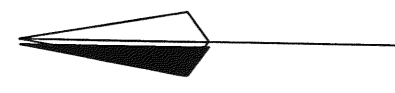
R 53 E



T 16 N

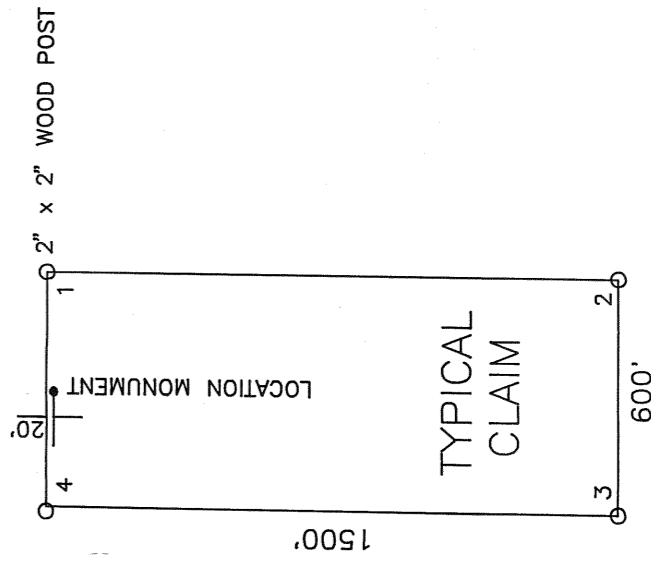
NOTE: NW CORNER FC 86 IS 6390 FEET SOUTH AND 3300 FEET EAST OF SW CORNER 7 T 16 N, R 53 E.

NOTE: ALL FC CLAIMS ARE TIED TO THE UNSURVEYED COMMON CORNER OF SECTIONS 17,18,19,20, T 16 N, R 53 E.



TRUE NORTH

SCALE 1"=500'
0 500'



ALL CLAIMS ARE 1500' x 600' UNLESS OTHERWISE NOTED.

COMINCO AMERICAN RESOURCES INCORPORATED
15120 EAST EUCLID AVENUE
SPOKANE, WASHINGTON 99216-1896

LODE CLAIMS FC 64-108
EUREKA COUNTY, NEVADA
SECTIONS: 17,18,19,20,29,30 T 16 N, R 53 E M.D.B.M.

LOCATED: FC 64-95 JULY 19, 1994
FC 96-108 JULY 20, 1994

PREPARED BY: NORTH AMERICAN EXPLORATION, INC.
472 NORTH MAIN
KAYSVILLE, UTAH 84037