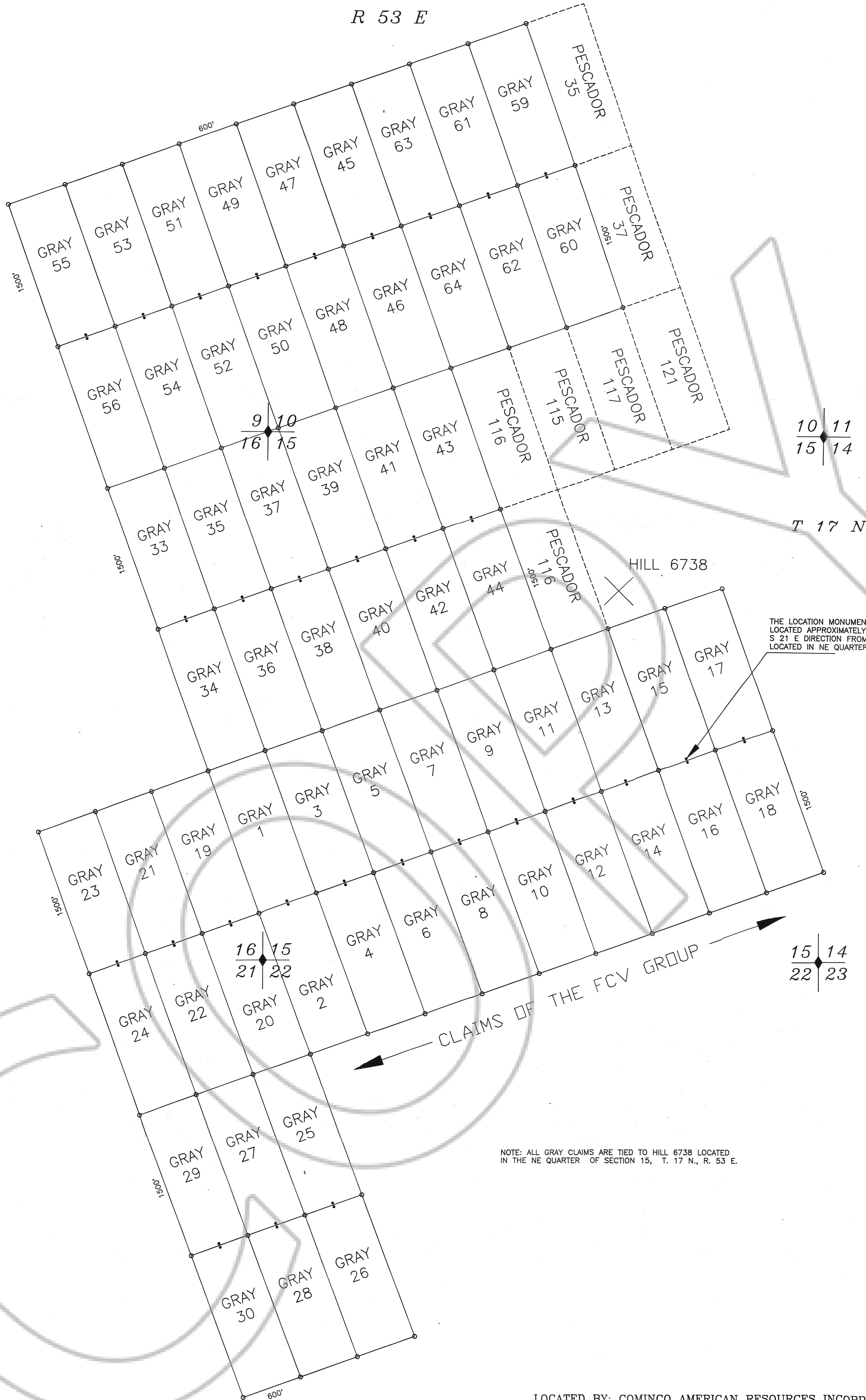


R 53 E



THE LOCATION MONUMENT OF GRAY 15 IS LOCATED APPROXIMATELY 1800 FEET IN A S 21 E DIRECTION FROM HILL 6738 LOCATED IN NE QUARTER OF SECTION 15.

NOTE: ALL GRAY CLAIMS ARE TIED TO HILL 6738 LOCATED IN THE NE QUARTER OF SECTION 15, T. 17 N., R. 53 E.

LOCATED BY: COMINCO AMERICAN RESOURCES INCORPORATED
15120 EAST EUCLID AVENUE
SPOKANE, WASHINGTON 99216-1896

LODE CLAIMS OF THE GRAY GROUP
EUREKA COUNTY, NEVADA
SECTIONS: 9,10,14,15,16,21,22, T. 17 N., R. 53 E., M.D.B.M.

LOCATED: GRAY 3-18 AUG. 10, 1994
GRAY 1&2, 19-30, 33-44 AUG. 11, 1994
GRAY 45-56, 59-64 AUG. 12, 1994

PREPARED BY: COMINCO AMERICAN RESOURCES INCORPORATED
15120 EAST EUCLID AVENUE
SPOKANE, WASHINGTON 99216-1896

