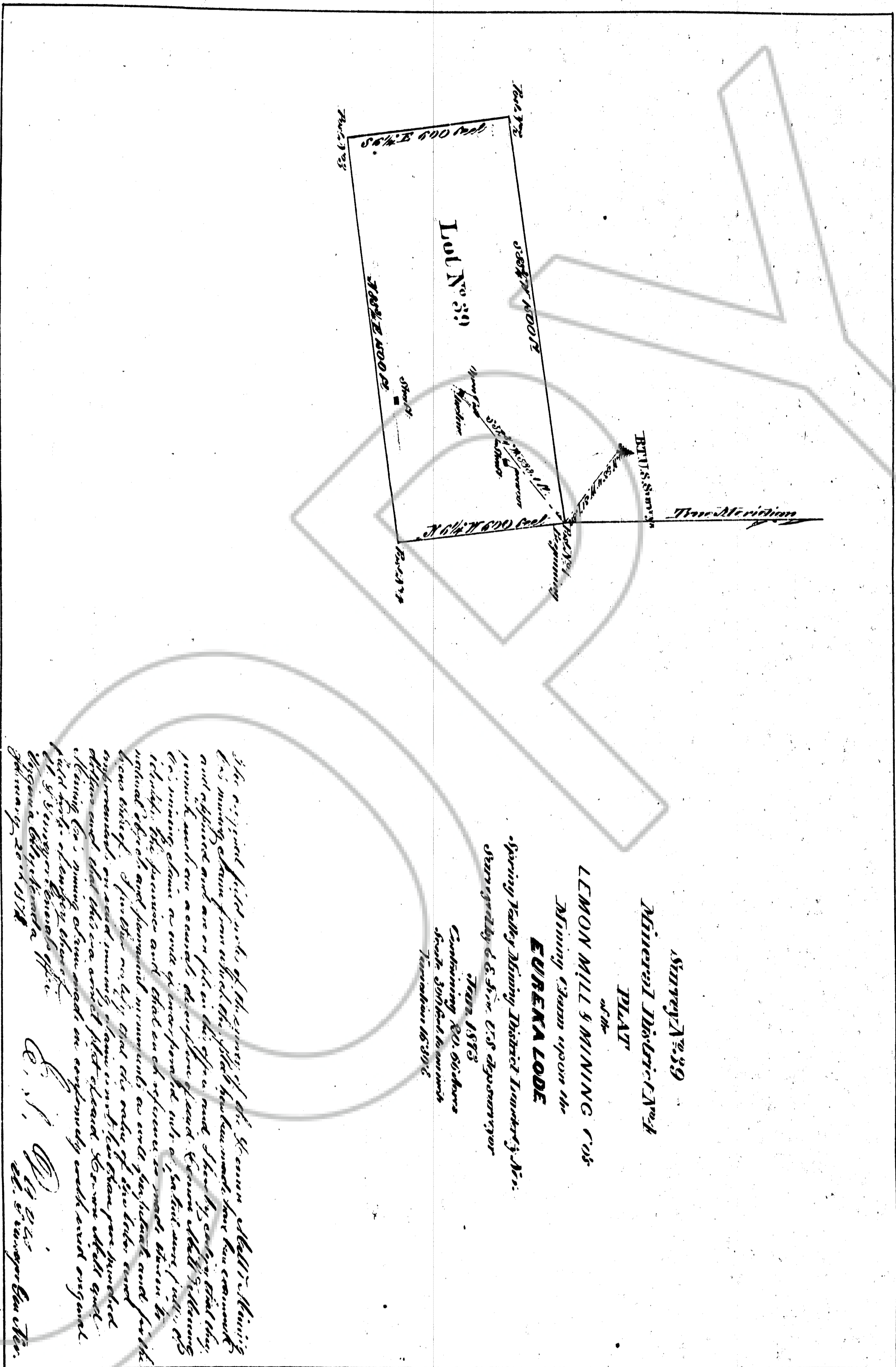


155394



20 875

The original field work of this survey of the Spring Valley Mining District was done from about the year 1870 and has been more or less corrected and adjusted and are on file in the office and shown by copies that they remain such an account the surface of land. It is to be noted that the original survey was done on a scale of one inch to one mile, and the original bearings and distances were taken on a magnetic meridian. It is to be noted that the original bearings and distances were taken on a magnetic meridian, and the original bearings and distances were taken on a magnetic meridian. It is to be noted that the original bearings and distances were taken on a magnetic meridian, and the original bearings and distances were taken on a magnetic meridian.

Spring Valley Mining District  
 Surveyed by G. S. Smith, U.S. Surveyor  
 Town 1873  
 Containing 80,000 acres  
 North 30th Sec 30, T. 39 N., R. 12 W., S. 39 E.

*E. S. Smith*  
 U.S. Surveyor  
 Sacramento, Cal.  
 February 20, 1874

# Spring Valley 39

CANCELLED 9/6/1994

OFFICIAL RECORDS  
 RECORDED AT THE REQUEST OF  
 94 OCT -4 PM 4:25  
 EUREKA COUNTY, NEVADA  
 H.M. REBALENTI, RECORDER  
 FILE NO. 155394  
 FEE \$ 2.00  
 REC