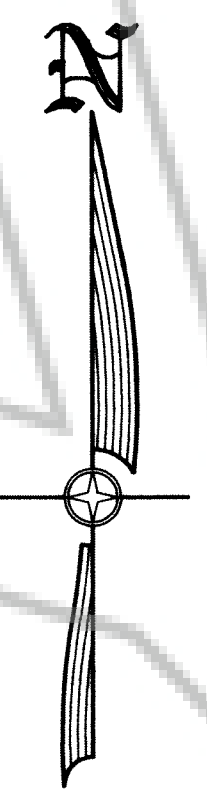


2  
1  
11 12  
BRASS CAP  
FOUND G.L.O.  
BRASS CAP  
E1/4 CORNER  
SECTION 11  
T35N - R50E, MDB & M



OWNER AND LOCATOR

NEWMONT GOLD COMPANY  
555 FIFTH STREET  
ELKO, NEVADA 89801

LOCATION DATES

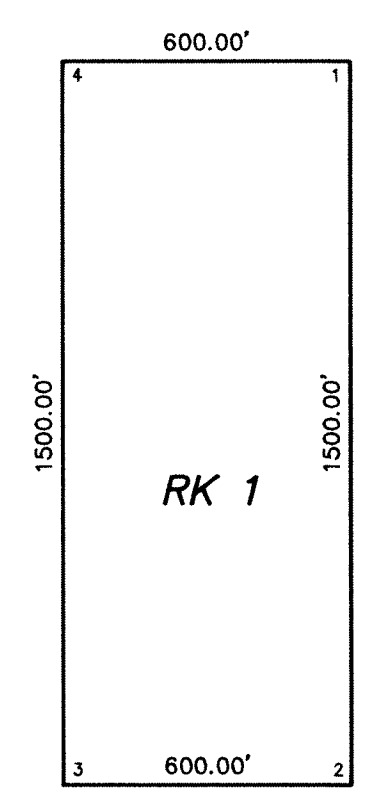
RK 1-6 & 8-11 WERE LOCATED ON AUGUST 17, 1994  
RK 7 WAS LOCATED ON OCTOBER 26, 1994

LEGEND

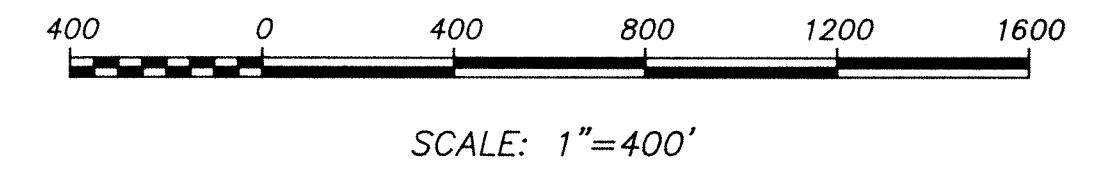
- = 4" X 4" WOOD POST CLAIM CORNER
- = 4" X 4" WOOD POST LOCATION MONUMENT
- ◆ = FOUND 1/4 CORNER
- W.C. = PHYSICAL LOCATION OF POST SET AS WITNESS CORNER FOR CLAIM CORNER OR LOCATION MONUMENT

NOTES

BASIS OF BEARINGS : THE LINE BETWEEN THE EAST 1/4 CORNER AND THE NORTHEAST CORNER OF SECTION 11, T35N - R50E, MDB & M, FOUND BRASS CAPS, TAKEN AS N 00° 03' 26" E.



TYPICAL CLAIM  
( EXCEPT AS NOTED )



MAP  
OF  
**RK LODE CLAIMS 1-11**  
BY  
NEWMONT GOLD COMPANY  
IN  
SECTIONS 10-15, T.35 N., R.50 E., M.D.B.& M.  
EUREKA COUNTY, NEVADA

**NEWMONT GOLD COMPANY**  
555 FIFTH STREET  
ELKO, NEVADA 89801

**94147**

FILED AT THE REQUEST OF Newmont Gold Co.  
on Oct 27 1994, at 3:22 mins, past 5 AM  
RECORDS OF EUREKA COUNTY, NEVADA M. N. REBALEATI, Recorder  
File No. 155602 Fee \$ 165.00