

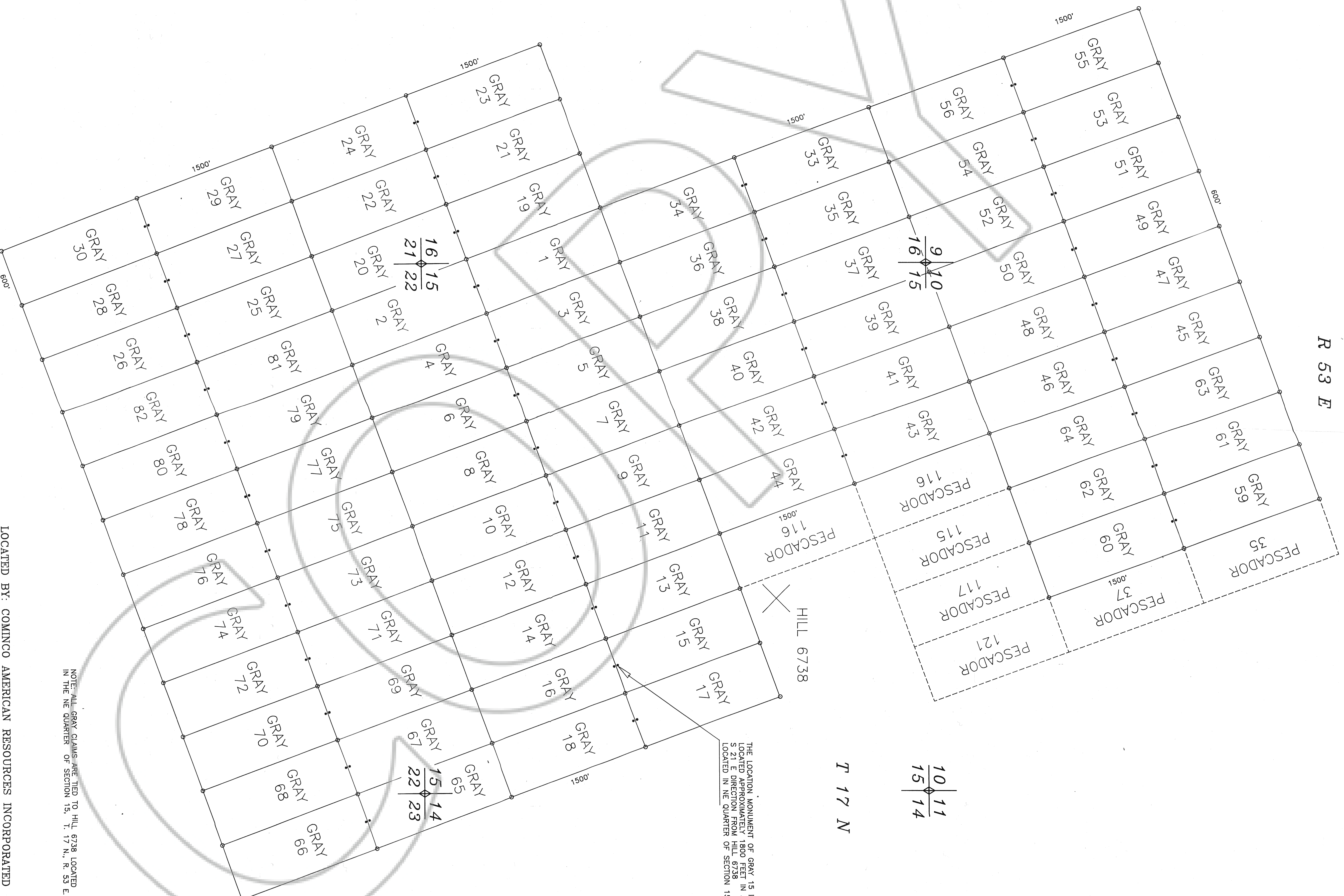
R 53 E

10 11
15 14

T 17 N

HILL 6738

THE LOCATION MONUMENT OF GRAY 15 IS
LOCATED APPROXIMATELY 1800 FEET IN A
S 21° E DIRECTION FROM HILL 6738
LOCATED IN NE QUARTER OF SECTION 15.



NOTE: ALL GRAY CLAIMS ARE TIED TO HILL 6738 LOCATED
IN THE NE QUARTER OF SECTION 15, T. 17 N., R. 53 E.

LOCATED BY: COMINCO AMERICAN RESOURCES INCORPORATED
15120 EAST EUCLID AVENUE
SPOKANE, WASHINGTON 99216-1896

LODE CLAIMS OF THE GRAY GROUP
EURÉKA COUNTY, NEVADA
SECTIONS: 9,10,14,15,16,21,22, 23, T. 17 N., R. 53 E., M.D.B.M.

LOCATED: GRAY 3-18 AUG. 10, 1994
GRAY 1&2, 19-30, 33-44 AUG. 11, 1994
GRAY 45-56, 59-64 AUG. 12, 1994
GRAY 65-82, SEPT. 15, 1994

PREPARED BY: COMINCO AMERICAN RESOURCES INCORPORATED
15120 EAST EUCLID AVENUE
SPOKANE, WASHINGTON 99216-1896

FILED AT THE REQUEST OF **Cominco American Resources, Inc.**
IN **Nevada** COUNTY, NEVADA
RECORDS SECTION 15, T. 17 N., R. 53 E.
Page **155704** Fee \$ **270.00**