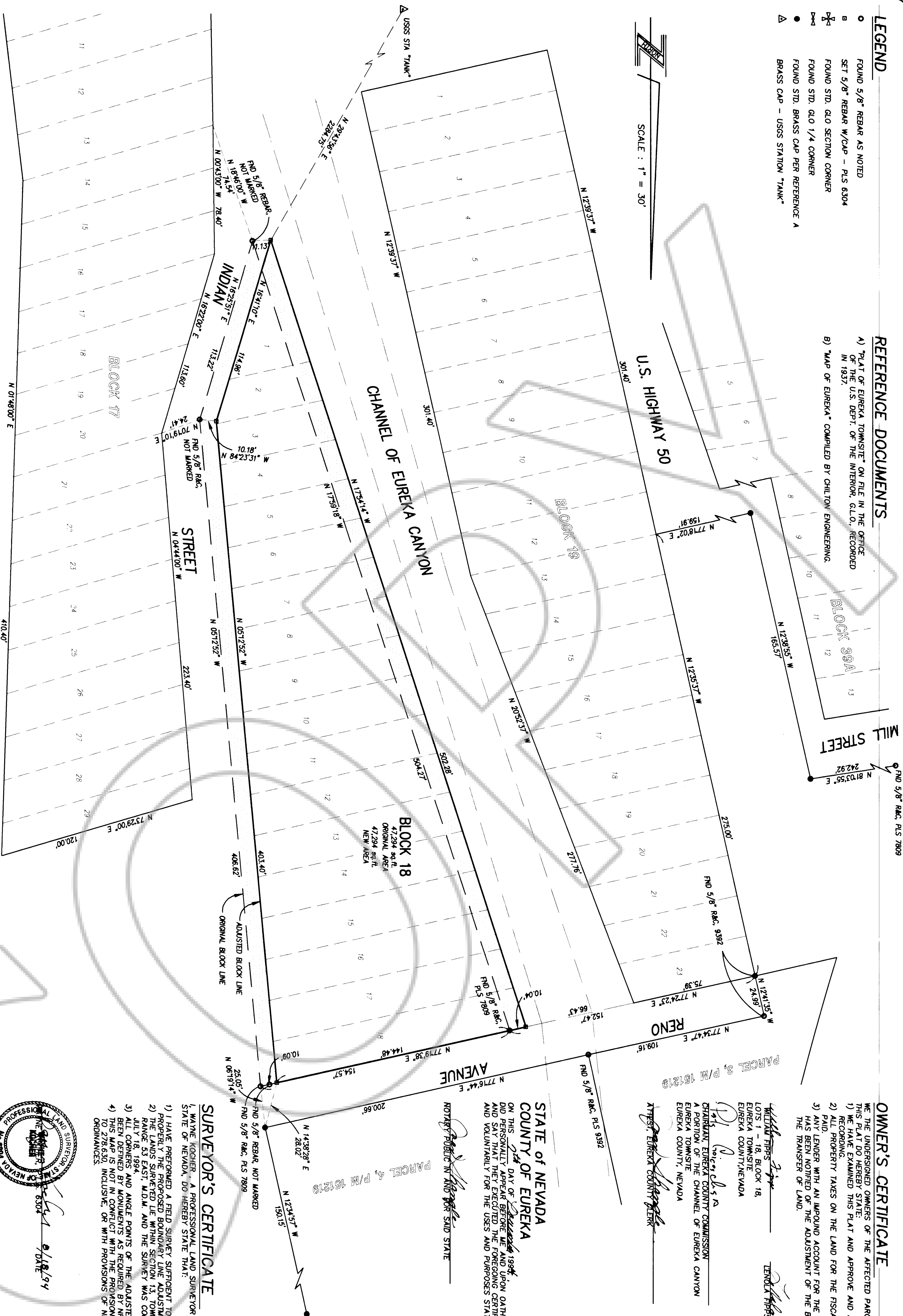


LEGEND

- FOUND 5/8" REBAR AS NOTED
- SET 5/8" REBAR W/CAP - PLS 6304
- ✕ FOUND STD. GLO SECTION CORNER
- FOUND STD. GLO 1/4 CORNER
- FOUND STD. BRASS CAP PER REFERENCE A
- △ BRASS CAP - USSS STATION "TANK"

REFERENCE DOCUMENTS

- "PLAT OF EUREKA TOWNSITE" ON FILE IN THE OFFICE OF THE U.S. DEPT. OF THE INTERIOR, G.L.O., RECORDED IN 1937.
- "MAP OF EUREKA" COMPILED BY CHILTON ENGINEERING.



BASIS of BEARING

THE BASIS OF BEARING FOR THIS SURVEY IS THE NORTH LINE OF THE NORTHEAST 1/4 OF SECTION 23, T. 19 N., R. 53 E., M.D.M., AS SHOWN ON REFERENCE DOCUMENTS A & B. THE BEARING OF SAID LINE BEING S 89°54' W.

NOTES

- 1) THIS RECORD OF SURVEY IS REQUIRED PER N.R.S. 625.340.
- 2) THIS IS NOT A PARCEL MAP AS DEFINED IN N.R.S.
- 3) THE INTENT OF THIS MAP IS TO SHOW A LOT LINE ADJUSTMENT BETWEEN BLOCK 18, EUREKA CANYON MOVING BLOCK 18 WESTERLY A DISTANCE OF 10 FEET.
- 4) NO NEW PARCELS ARE CREATED AS A RESULT OF THIS MAP.

GOVERNING AGENCY CERTIFICATE

EUREKA COUNTY HAS REVIEWED AND APPROVED THIS MAP AT THEIR MEETING HELD ON THE 12th DAY OF November, 1994.

APPROVED BY: *[Signature]* CHAIRMAN, EUREKA COUNTY COMMISSION

ATTEST: *[Signature]* CLERK, EUREKA COUNTY

DATE: 11-17-94

OWNER'S CERTIFICATE

WE THE UNDERSIGNED OWNERS OF THE AFFECTED PARCELS AS SHOWN ON THIS PLAT DO HEREBY STATE:  
1) WE HAVE EXAMINED THIS PLAT AND APPROVE AND AUTHORIZE ITS RECORDING.  
2) ALL PROPERTY TAXES ON THE LAND FOR THE FISCAL YEAR HAVE BEEN PAID.  
3) ANY LEADER WITH AN IMPOUND ACCOUNT FOR THE PAYMENT OF TAXES HAS BEEN NOTIFIED OF THE ADJUSTMENT OF THE BOUNDARY LINE OR THE TRANSFER OF LAND.

*[Signature]*  
WILLIAM HIPS, JR.  
LOTS 1 - 18, BLOCK 18,  
EUREKA TOWNSITE  
EUREKA COUNTY, NEVADA

*[Signature]*  
TENDRA HIPS  
LOTS 1 - 18, BLOCK 18,  
EUREKA TOWNSITE  
EUREKA COUNTY, NEVADA

*[Signature]*  
CHARMAN, EUREKA COUNTY COMMISSION  
A PORTION OF THE CHANNEL OF EUREKA CANYON  
EUREKA TOWNSITE  
EUREKA COUNTY, NEVADA

ATTEST: *[Signature]* CLERK, EUREKA COUNTY

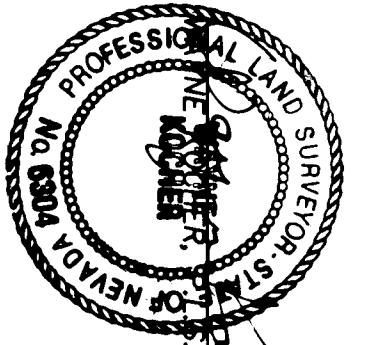
STATE OF NEVADA  
COUNTY OF EUREKA

ON THIS 24 DAY OF December, 1994,  
I, *[Signature]*, A PROFESSIONAL LAND SURVEYOR, DO HEREBY  
DO HEREBY CERTIFY THAT I HAVE EXAMINED THE RECORDING CERTIFICATE FREELY  
AND VOLUNTARILY FOR THE USES AND PURPOSES STATED THEREIN.

NOTARY PUBLIC IN AND FOR SAID STATE  
*[Signature]*

SURVEYOR'S CERTIFICATE

- I, WAYNE KOCHER, A PROFESSIONAL LAND SURVEYOR REGISTERED IN THE STATE OF NEVADA, DO HEREBY STATE THAT:
- 1) I HAVE PREPARED A FIELD SURVEY SUBMITTANT TO LOCATE AND IDENTIFY PROPERLY THE PROPOSED BOUNDARY LINE WITHIN SECTION 13, TOWNSHIP 19 NORTH, RANGE 53 EAST, M.D.M. AND THE SURVEY WAS COMPLETED ON JULY 18, 1994.
  - 2) ALL CORNERS AND ANGLE POINTS OF THE ADJUSTED BOUNDARY HAVE BEEN DEFINED BY MONUMENTS AS REQUIRED BY NRS 625.340.
  - 3) THIS MAP IS NOT IN CONFLICT WITH THE PROVISIONS OF NRS 278.010 THROUGH 278.015, INCLUSIVE, OR WITH PROVISIONS OF NRS 625 AND LOCAL ORDINANCES.



DATE: 8/18/94

RECORDER'S CERTIFICATE

RECORD OF SURVEY  
SUPPORTING A BOUNDARY LINE ADJUSTMENT  
FOR  
EUREKA COUNTY

BLOCK 18, A PORTION OF THE SW 1/4 OF NW 1/4 OF SECTION 13, T. 19 N., R. 53 E., M.D.M.,  
EUREKA TOWNSITE, EUREKA COUNTY, NEVADA



LUNDUS AND ASSOCIATES  
2000 N. RIVER ST., SUITE 100, LAS VEGAS, NV 89103  
DATE: August 16, 1994  
JOB NO. 2927.007  
SHEET 1 OF 1

FILED AT THE REQUEST OF EUREKA County  
EUREKA COUNTY COMMISSION  
ON THE 8th DAY OF November, 1994,  
AT 2:10 PM, PAST 10 AM, IN THE  
OFFICIAL RECORDS OF EUREKA COUNTY,  
NEVADA.  
FILE NUMBER: 155731  
FEE: \$ 0-