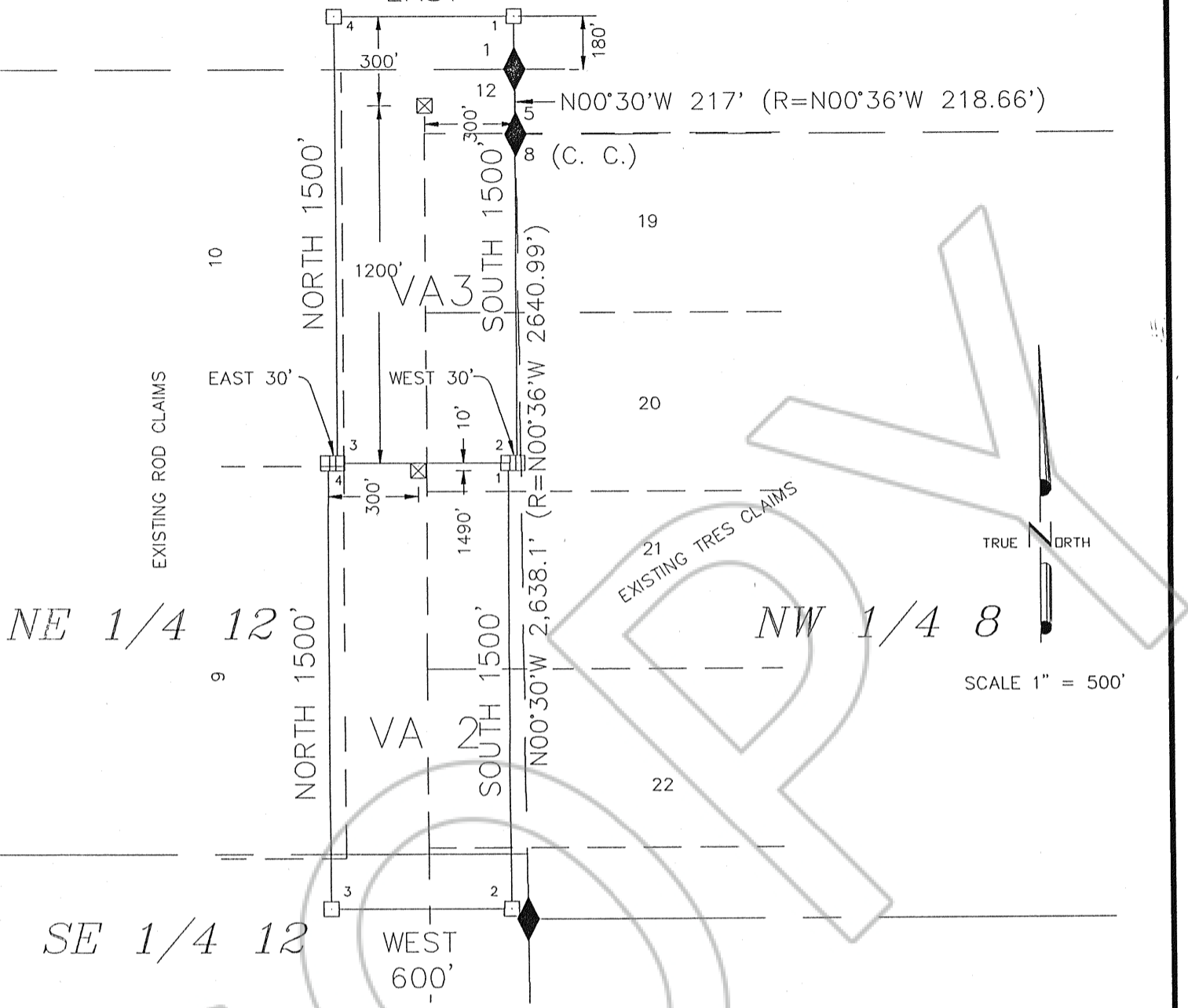


T. 35 N., R. 49 E.

T. 35 N., R. 50 E., MDM

SE 1/4 1

SW 1/4 5



TRUE NORTH

SCALE 1" = 500'

Basis of Bearing - Solar Observation

LEGEND

- ⊠ - 2" x 2" x 4' WOOD POST LOCATION MONUMENT
- - 2" x 2" x 4' WOOD POST MONUMENT
- ◆ FOUND SECTION CORNER, OR QUARTER CORNER, ALL GLO BRASS CAPS

MAP OF THE
VA 2 & VA 3
LODE MINING CLAIMS

Sections 1, and 12
T. 35 N., R. 49 E., MDM
Eureka County, Nevada

LOCATION DATES:
SEPT. 3, 1994 VA 2 and VA 3

FILED AT THE REQUEST OF Newmont Exploration
on Nov 22 1994, at 40 mins, past 2 P.M.
RECORDS OF EUREKA COUNTY, NEVADA M. N. REBALEATI, Recorder
File No. 155911 Fee \$ 30.00

Locator
VEK/Andrus Associates
836 East York Way
Sparks, Nevada 89434